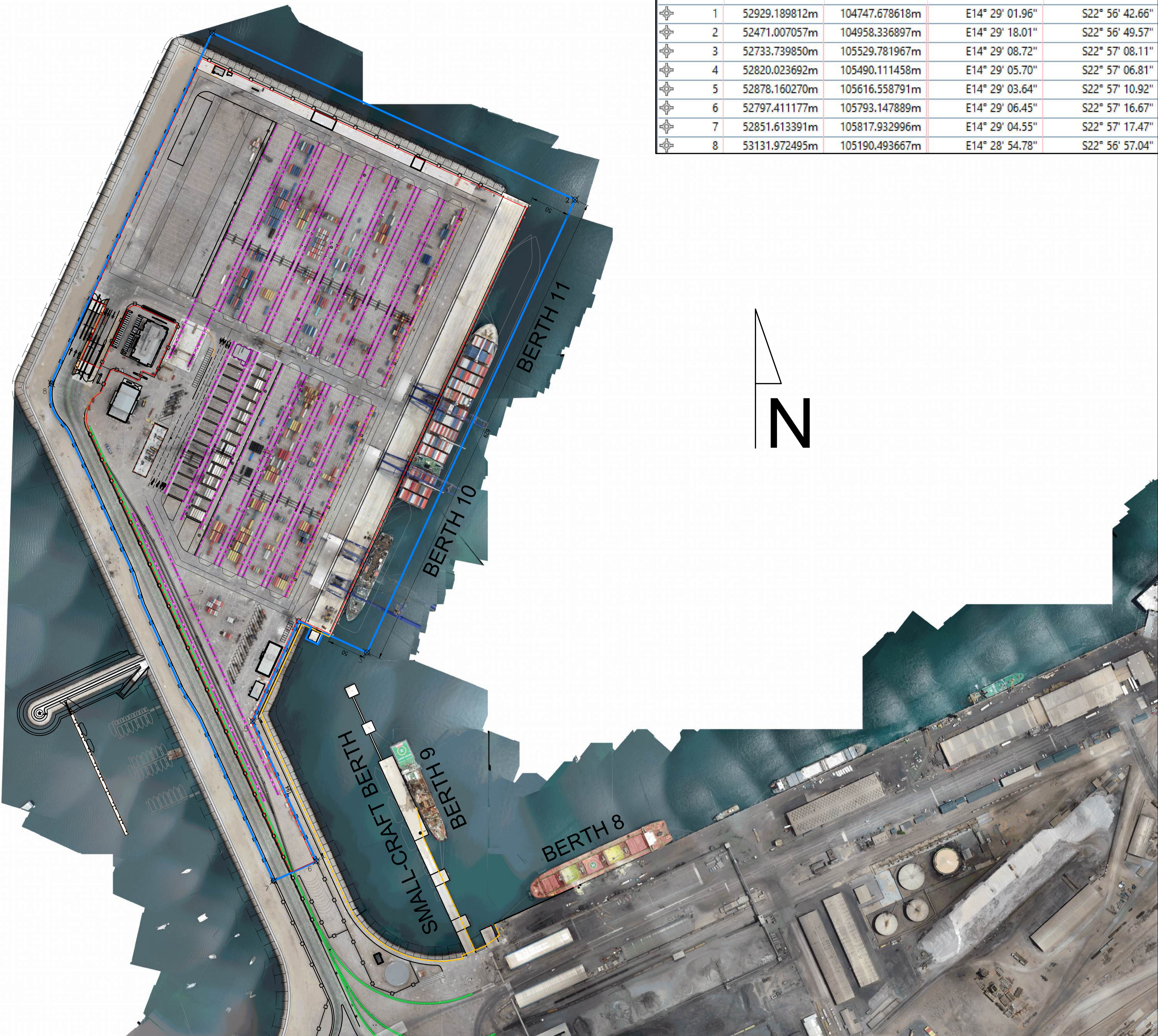


Point Nu...	Easting	Northing	Longitude	Latitude
1	52929.189812m	104747.678618m	E14° 29' 01.96"	S22° 56' 42.66"
2	52471.007057m	104958.336897m	E14° 29' 18.01"	S22° 56' 49.57"
3	52733.739850m	105529.781967m	E14° 29' 08.72"	S22° 57' 08.11"
4	52820.023692m	105490.111458m	E14° 29' 05.70"	S22° 57' 06.81"
5	52878.160270m	105616.558791m	E14° 29' 03.64"	S22° 57' 10.92"
6	52797.411177m	105793.147889m	E14° 29' 06.45"	S22° 57' 16.67"
7	52851.613391m	105817.932996m	E14° 29' 04.55"	S22° 57' 17.47"
8	53131.972495m	105190.493667m	E14° 28' 54.78"	S22° 56' 57.04"



SHARED FACILITIES

The following is a list of NCT ASSETS that are within the Project Site and are either fully carved out of the Project Site or are to be operated and maintained by the Concessionaire for the benefit of the rest of the port, i.e., shared with Namport or with third parties, as directed by Namport, with no compensation:

- Main Railway Line shown in green color. This railway line is carved out completely, i.e., it does not form part of the Project Site and will be operated and maintained by Namport or third parties appointed by Namport. Suitable unhindered access should thus be provided to Namport or its duly appointed agents to conduct these operations and maintenance on a daily basis. The Concessionaire will be responsible for manning the train gate through which trains will enter the Project Site several times a day, 24/7, and will do so in strict compliance with the requirements of the ISPS code.
- Main seawater fire fighting pump station and related pipework running through the Project Site. The main seawater firefighting pump station and related pipework serves the Project Site as well as berths 1 to 8 which is outside the project site. As such the Concessionaire will be required to share these assets and to operate and maintain them for the benefit of the rest of the port areas which is being served by this fire fighting system.
- Information and Communication Technology fixed and wireless data and CCTV networks are required to be shared with Namport where required by Namport, with associated low voltage electricity supply.
- CCTV cameras installed on the perimeter of the Project Site is carved out completely and does not form part of the Project Site, i.e., will be owned, operated and maintained by Namport.
- The Berth 10 berth pocket overlaps with the water area to be used to maneuver and berth small-craft at the small-craft berth behind Berth 9. This overlapping area is considered a Shared Facility.
- NCT Main Administration building roof entertainment area. This part of the building will be a Shared Facility as well as the access routes to and from it. Namport's access to the roof entertainment area and access routes will be subject to the Concessionaire's prior authorization (which shall not be unreasonably withheld) and to the terminal's HSSE rules and access control policy.
- Berth 10 and 11 is a Shared Facility when no container ship is berthed or is scheduled to be berthed at any given time. Namport will thus have the right to berth any vessels at these berths when they are not in use. This includes Namport using these berths for loading and offloading non-containerized cargo and hauling it by road in and out of the Project Site by suitable means, including the routes to and from these berths as well as the quayside space required. The above shall not interfere with the container vessels schedules, and if a container vessel arrives at the NCT, then the vessel causing the disruption will have to be shifted outside of the NCT.
- Any mobile type fencing such as precast concrete barriers etc., that may be located on the Project Site does not form part of the NCT Assets and may be removed by Namport unless otherwise formally agreed with Namport.
- The quay wall access tunnel is a Shared Facility. It contains adequate space and allowance for the installation of future bunkering pipelines and associated infrastructure to give bunkers to vessels alongside berths 10 and 11. Namport may in future arrange for the installation of fixed bunkering fuel lines in the quay wall service tunnel in order to provide bunker fuel to ships at berths 10 and 11. The Concessionaire will have no mandate or authority to get involved in bunkering operations and this remains a Namport mandate at berths 10 and 11.
- The above ground route for future bunkering pipelines which runs all the way from berth 8 to berth 10 on the pavement adjacent to the revetments and on, below or on the side of the quay wall is a Shared Facility where it runs within the Project Site.

LEGEND:

- TIL SITE BOUNDARY OR PROJECT SITE PERIMETER
- +++++ MAIN RAILWAY LINE THAT DOES NOT FORM PART OF THE NCT ASSETS.
- FIXED PALISADE FENCING
- MOBILE TYPE PRECAST CONCRETE BARRIER FENCING
- ROUTE FOR FUTURE BUNKERING PIPELINE(S) FROM BERTH 8 TO BERTH 10/11
- ISPS SECURITY BOUNDARY (SLIGHTLY OFFSET AWAY FROM THE FENCE FOR CLARITY ON THIS DRAWING)

NOTES

- Reference to "NAMPORT" and/or "CONCESSIONING AUTHORITY" will have the same meaning in this document.
- The Project Site is defined by the area enclosed by the blue line shown on this drawing, which is in turn defined by the corner points marked 1 to 8 each having a unique set of coordinates that are with reference to the Namibian local LO22/15 coordinate system. The line formed by pints 7-8-1 runs on the actual path shown and not simply as straight lines between these three points. Where such blue line runs on top of existing fencing then such fencing is included within the Project Site. The fire pump station next to berth 10 is included in the project site.
- Except for the Berth Pockets where the Project Site protrudes into the water then that part of the Project Site boundary shall be limited to the toe-line of the rock revetment on the seabed and not beyond.
- Adequate space must be allowed and maintained between a ship berthed at berth 10 and the corner of berth 9 such that any small-craft can maneuver and berth at the back of berth 9 which berth is used by Namport tugboats and other suitably sized vessels.
- Utility metering points (such as for electricity, potable water, sewer) are not shown on this drawing and will need to be determined and agreed between both parties in terms of their location. The cost of installation of utility metering points are to be borne fully by the Concessionaire.
- Fresh water supply, electricity supply and sewer removal are provided to Namport by third parties such as the Walvis Bay Municipality and Erongo RED and as such Namport does not make any guarantees regarding the reliability of these utilities.
- The Concessionaire will not have the option of generating its own electricity and will be required to make use of the electricity supplied to Namport by Erongo RED from the national grid.
- The Concessionaire will not have the option of putting up a desalination plant for potable water generation.
- The Concessionaire will not get involved in any fuel bunkering operations to ships since this remains a Namport mandate and is a service that Namport outsource to a third party from time to time. The Concessionaire will accommodate such bunkering operations for vessels berthed at berth 10 and 11 in all respects and without compensation.
- The Concessionaire is required to comply fully with the International Ship and Port Security (ISPS) code. The ISPS code land-side security boundary for the Project Site is shown roughly on this layout in red (see legend above) and the Concessionaire is required to comply with all requirements of the ISPS code in maintaining this security barrier in all respects including but not limited to access control, fencing, intrusion detection, signs, notice boards, etc.

100mm ON SIZE A1



NAMIBIAN PORTS AUTHORITY
PORT ENGINEER'S DESIGN OFFICE
P. O. BOX 361
NO. 17, RIKUMBI KANDANGA RD,
WALVIS BAY, NAMIBIA
TEL.: +264 (64) 208 2376
MOBILE: +264 (0) 81 2755 214

PORT OF WALVIS BAY
SOUTH PORT

SCHEDULE 2 - PROJECT SITE:
PORT OF WALVIS BAY - TIL CONTAINER TERMINAL
CONCESSION AREA - PHYSICAL BOUNDARIES OF
THE PROJECT SITE

DRAWN ELZEVR GELDERBLOEM				
DESIGNED ELZEVR GELDERBLOEM				
CHECKED ELZEVR GELDERBLOEM				
APPROVED ANDREW KANIME				
10. AMENDED "SHARED FACILITIES" NOTES 6 AND 7, AND PROJECT SITE POINTS 4,5 AND 6.	03/06/24	EG		
9. ISSUED TO TIL	08/12/23	EG		
NO.	REVISIONS	DATE	BY	

ISSUED

Elzevir W. Gelderbloem
PORT ENGINEER

DATE 23 NOV 2023	SCALE 1:2500
REGISTRATION NO. 602A925_NCT TIL PROJECT SITE PLAN_051202023 R10	