

**ENVIRONMENTAL MANAGEMENT PLAN  
(EMP)  
FOR THE PROPOSED SMALL-SCALE  
MINING ACTIVITIES FOR BASE AND RARE  
METALS ON MINING CLAIM (MC) 68193 IN  
OMAO VILLAGE, OPUWO DISTRICT,  
KUNENE REGION, NAMIBIA**

**Report Version: DRAFT**

**Proponent:** Tjihoto, Uariongozu Marks

**Environmental Assessment Practitioner:** Simeon  
Namweya

**ECC Application: APP-007416**

**Date:** May 2026

## Table of Contents

1	INTRODUCTION.....	1
1.1	Project Locality .....	1
2	EMP OBJECTIVES .....	3
3	LEGAL AND POLICY FRAMEWORK .....	4
4	ROLES AND RESPONSIBILITIES.....	6
5	ENVIRONMENTAL MANAGEMENT ACTION PLAN.....	7
6	MONITORING REQUIREMENTS .....	18
6.1	Environmental Monitoring and Compliance Oversight .....	19
7	INCIDENT REPORTING AND CORRECTIVE ACTIONS .....	20
8	REVIEW AND UPDATE OF THE EMP.....	20
9	CONCLUSION .....	21

## LIST OF FIGURES

Figure 1: Locality Map of Mining Claim 68193 in Omao Village, Opuwo District, Kunene Region, Namibia.....	2
---	---

## LIST OF TABLES

Table 1: Applicable Legal and Policy Framework.....	4
Table 2: Roles and Responsibilities .....	6
Table 3: Vegetation and Habitat Management Measures .....	7
Table 4: Soil Disturbance and Erosion Management Measures.....	8
Table 5: Groundwater Protection and Water Management Measures.....	9
Table 6: Waste Management Measures.....	10
Table 7: Dust Generation Management Measures .....	11
Table 8: Faunal Disturbance Management Measures .....	11
Table 9: Noise Management Measures .....	12
Table 10: Traffic and Access Management Measures.....	13
Table 11: Occupational Health and Safety Measures.....	14
Table 12: Heritage Resource Management Measures.....	15
Table 13: Community Interaction and Land Use Management Measures .....	16
Table 14: Rehabilitation and Closure Management Measures.....	17
Table 15: Environmental Monitoring Requirements.....	18

# 1 INTRODUCTION

This Environmental Management Plan (EMP) has been prepared for the proposed small-scale mining activities for Base and Rare Metals on Mining Claim (MC) 68193 located in Omao Village, Opuwo District, Kunene Region, Namibia.

The purpose of this EMP is to provide practical environmental management measures aimed at avoiding, minimising, and managing potential environmental and social impacts associated with the proposed project.

The EMP establishes environmental management commitments applicable to the Proponent, employees, and contractors involved in project activities. The document further outlines mitigation measures, monitoring requirements, rehabilitation commitments, and management procedures intended to promote responsible environmental management throughout the project lifecycle.

This EMP should be implemented together with applicable environmental legislation, Environmental Clearance Certificate conditions, and commitments contained in the Environmental Scoping Assessment Report prepared for the proposed project.

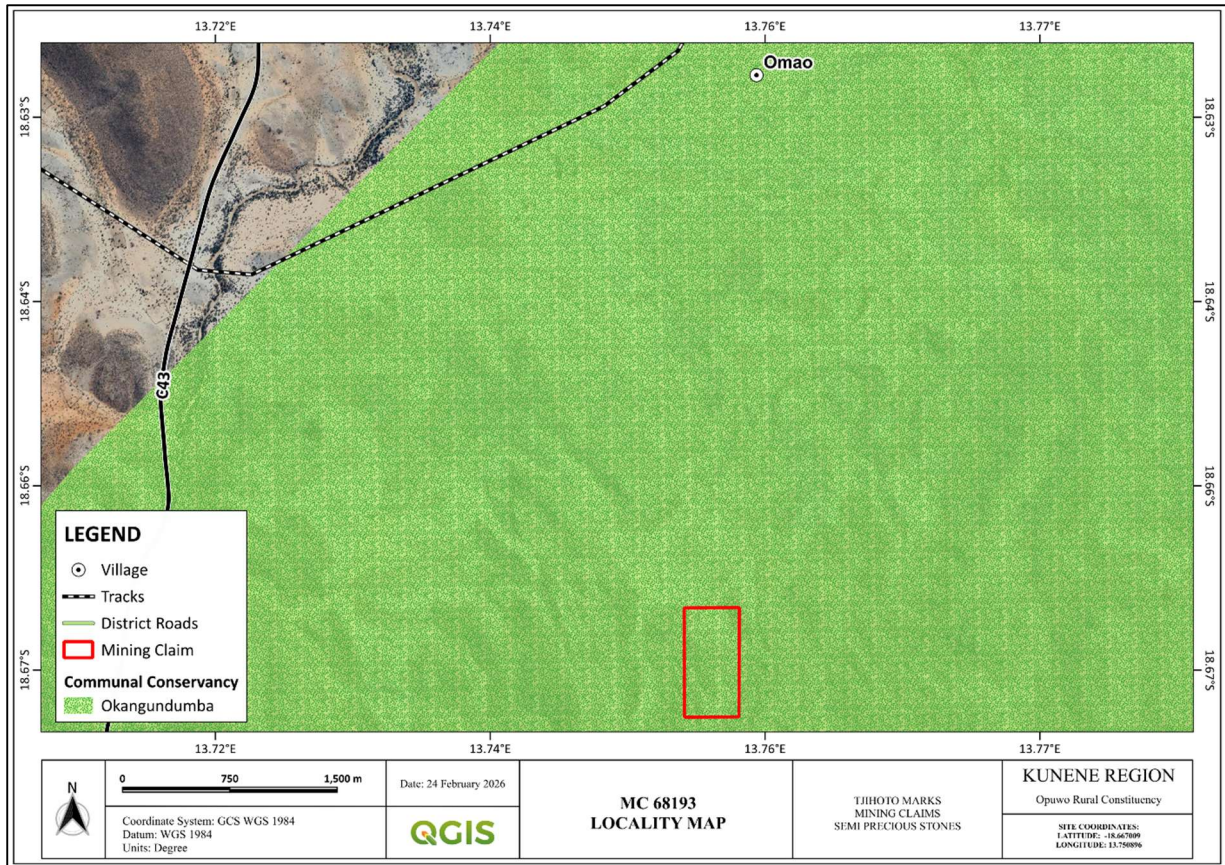
## 1.1 Project Locality

Mining Claim 68193 is situated in Omao Village within the Opuwo District, Kunene Region, Namibia. The Mining Claim occurs within communal land associated with the Okangundumba Conservancy and under the jurisdiction of the Ombombo Traditional Authority.

Land use surrounding the Mining Claim is predominantly characterised by communal grazing activities and natural savanna vegetation.

Access to the site is obtained from the C43 road and existing dirt roads leading to the Mining Claim area.

The project locality is illustrated in **Figure 1** below.



**Figure 1: Locality Map of Mining Claim 68193 in Omao Village, Opuwo District, Kunene Region, Namibia.**

## 2 EMP OBJECTIVES

The purpose of this Environmental Management Plan (EMP) is to provide environmental management commitments and practical mitigation measures aimed at minimising potential environmental and social impacts associated with the proposed small-scale mining activities on Mining Claim 68193.

The EMP further establishes management responsibilities, monitoring requirements, and environmental performance measures intended to promote responsible environmental management throughout the project lifecycle.

The objectives of the EMP are to:

- Ensure compliance with applicable environmental legislation, Environmental Clearance Certificate conditions, and regulatory requirements;
- Minimise unnecessary disturbance to vegetation, soils, biodiversity resources, and surrounding environmental features;
- Prevent environmental pollution associated with mining activities, waste generation, and hydrocarbon contamination;
- Promote responsible water use and management practices;
- Protect heritage resources and implement heritage chance-find procedures where heritage resources are encountered;
- Promote occupational health and safety for all personnel operating within the Mining Claim area;
- Encourage responsible interaction with surrounding land users and conservancy resources;
- Promote progressive rehabilitation of disturbed areas and responsible mine closure practices; and
- Establish monitoring and reporting measures to support continued environmental compliance.

### 3 LEGAL AND POLICY FRAMEWORK

This Environmental Management Plan (EMP) has been prepared in accordance with applicable environmental, mining, and related legislation governing environmental management and mining activities in Namibia.

The legislative framework establishes obligations aimed at promoting sustainable resource utilisation, environmental protection, pollution prevention, and responsible management of potential environmental and social impacts associated with the proposed project.

Activities associated with Mining Claim 68193 remain subject to applicable national legislation and regulatory requirements.

**Table 1** presents the legislation considered relevant to the proposed project.

**Table 1: Applicable Legal and Policy Framework**

Legislation / Policy	Responsible Authority	Relevance to the Proposed Project
Constitution of the Republic of Namibia (1990, as amended)	Government of Namibia	Provides for environmental protection and sustainable utilisation of natural resources.
Environmental Management Act, No. 7 of 2007	Ministry of Environment, Forestry and Tourism (MEFT)	Provides the framework for environmental assessment, environmental management, and Environmental Clearance Certificates.
Environmental Impact Assessment Regulations (GN No. 30 of 2012)	MEFT	Regulates listed activities and environmental authorisation requirements.
Minerals (Prospecting and Mining) Act, No. 33 of 1992	Ministry of Industries, Mines and Energy (MIME)	Governs mining claims, mineral extraction activities, and rehabilitation obligations.

Communal Land Reform Act, No. 5 of 2002	Ministry of Agriculture, Fisheries, Water and Land Reform (MAFWLR)	Provides for administration and management of communal land.
Nature Conservation Ordinance, No. 4 of 1975	MEFT	Provides for conservation and protection of wildlife resources.
Forestry Act, No. 12 of 2001	MEFT	Provides protection of protected tree species and vegetation resources.
Water Resources Management Act, No. 11 of 2013	MAWLR	Regulates protection and sustainable use of water resources.
National Heritage Act, No. 27 of 2004	National Heritage Council of Namibia	Protects archaeological, cultural, and heritage resources.
Labour Act, No. 11 of 2007	Ministry of Labour, Industrial Relations, and Employment Creation	Provides for occupational health and safety and employee welfare.
Public and Environmental Health Act, No. 1 of 2015	Ministry of Health and Social Services	Promotes protection of public and environmental health.
Road Traffic and Transport Act, No. 22 of 1999	Ministry of Works and Transport	Regulates transportation activities associated with the project.

## 4 ROLES AND RESPONSIBILITIES

Effective implementation of this Environmental Management Plan (EMP) requires commitment from the Proponent, employees, contractors, and other personnel involved in project activities associated with Mining Claim 68193.

Environmental responsibilities should be clearly communicated to all personnel to promote compliance with environmental requirements and implementation of mitigation measures contained within this EMP.

**Table 2** outlines the roles and responsibilities applicable to implementation of the EMP.

**Table 2: Roles and Responsibilities**

<b>Role</b>	<b>Responsibility</b>
Proponent (Tjihoto, Uariongozu Marks)	Overall responsibility for implementation of the EMP, compliance with Environmental Clearance Certificate conditions, and adherence to applicable legal requirements.
Employees and Contractors	Comply with mitigation measures, operational procedures, and environmental requirements contained within the EMP.
Site Personnel	Implement environmental management measures during project activities and report environmental incidents or non-compliance.
Environmental Control Officer (where appointed)	Conduct inspections, monitor compliance, and provide recommendations for corrective actions where required.
Environmental Assessment Practitioner (where required)	Provide environmental guidance and support environmental compliance where requested by the Proponent.
Drivers and Equipment Operators	Comply with designated access routes, speed controls, safe operating procedures, and environmental management requirements relating to dust, traffic, and fauna protection.
Traditional Authority and Conservancy Representatives	Engage with the Proponent on matters relating to communal land use, conservancy interests, and community concerns where required.

## 5 ENVIRONMENTAL MANAGEMENT ACTION PLAN

This section presents environmental management measures aimed at avoiding, minimising, and managing potential environmental and social impacts associated with the proposed small-scale mining activities on Mining Claim 68193.

The mitigation measures outlined below shall be implemented by the Proponent, employees, and contractors throughout the project lifecycle to promote environmental protection and regulatory compliance.

The environmental management measures have been developed with consideration of the environmental conditions of the Mining Claim area, conservancy-related sensitivities, existing land uses, and impacts identified during the Environmental Scoping Assessment process.

The management measures presented below shall be implemented together with applicable Environmental Clearance Certificate conditions and relevant legislative requirements.

**Table 3: Vegetation and Habitat Management Measures**

Impact Event	Desired Outcome	Mitigation	Mitigation Measures	Responsibility	Monitoring
Vegetation disturbance and habitat alteration	Minimise vegetation disturbance and maintain ecological functioning within the conservancy landscape		Restrict disturbance to approved operational areas.	Site Personnel / Employees / Contractors	Ongoing
			Avoid unnecessary vegetation clearing.	Site Personnel / Employees	Ongoing
			Utilise existing access roads and tracks.	Drivers / Site Personnel	Ongoing
			Protected plant species must not be removed or damaged without the required authorisation.	Proponent / Site Personnel	Ongoing
			Disturbed areas should be rehabilitated progressively during operations and upon closure.	Proponent / Site Personnel	Operational and Closure Phases
			Hunting, collection, or disturbance of wildlife	Employees / Contractors	Ongoing

		by personnel is prohibited.		
--	--	-----------------------------	--	--

Table 4: Soil Disturbance and Erosion Management Measures

Impact Event	Desired Outcome	Mitigation	Mitigation Measures	Responsibility	Monitoring
Soil disturbance and erosion	Minimise soil disturbance and reduce erosion potential		Restrict disturbance to approved operational areas.	Site Personnel / Employees / Contractors	Ongoing
			Topsoil removed during site preparation must be stockpiled separately for rehabilitation purposes.	Proponent / Site Personnel	During Site Preparation
			Utilise existing access roads and tracks to minimise unnecessary surface disturbance.	Drivers / Site Personnel	Ongoing
			Limit excavation and land disturbance to operational requirements only.	Employees / Contractors / Site Personnel	Ongoing
			Soil stockpiles must be maintained in a stable condition and protected from erosion.	Site Personnel / Proponent	Monthly
			Stormwater runoff must not be concentrated in a manner that promotes erosion.	Site Personnel / Contractors	Monthly
			Disturbed areas must be rehabilitated progressively during operations and upon closure.	Proponent / Site Personnel	Operational and Closure Phases
			Evidence of erosion must be addressed promptly through appropriate corrective measures.	Site Personnel / Proponent	As Required

Table 5: Groundwater Protection and Water Management Measures

Impact Event	Desired Mitigation Outcome	Mitigation Measures	Responsibility	Monitoring
Groundwater contamination and water resource impacts	Prevent contamination of groundwater resources and promote responsible water use	Fuel, oils, lubricants, and other hazardous substances must be stored in designated areas with appropriate spill containment measures.	Proponent / Site Personnel	Ongoing
		Refuelling and maintenance activities must be undertaken in designated areas away from drainage lines and areas prone to runoff.	Site Personnel / Employees	Ongoing
		Spill response equipment must be available at areas where fuel or hazardous substances are stored or handled.	Proponent / Site Personnel	Monthly
		Spillages must be contained and cleaned up immediately, and contaminated material disposed of appropriately.	Employees / Contractors / Site Personnel	As Required
		Wastewater must not be discharged directly onto surrounding land surfaces.	Employees / Contractors	Ongoing
		Water must be used efficiently to minimise unnecessary consumption.	Site Personnel / Proponent	Monthly
		Any pollution incident with potential impact on groundwater resources must be reported and corrective measures implemented.	Site Personnel / Proponent	As Required

Table 6: Waste Management Measures

Impact Event	Desired Mitigation Outcome	Mitigation Measures	Responsibility	Monitoring
Waste generation	Prevent pollution and maintain good housekeeping standards	General waste generated during project activities must be collected and stored in designated waste containers.	Site Personnel / Employees / Contractors	Weekly
		Waste must not be disposed of indiscriminately within the Mining Claim area.	Employees / Contractors	Ongoing
		General waste must be removed from site and disposed of at an approved waste disposal facility.	Proponent / Site Personnel	As Required
		Hydrocarbon-contaminated materials, used oils, and other hazardous waste must be collected separately and disposed of at approved facilities.	Site Personnel / Contractors	As Required
		Scrap metal and recyclable materials should be separated and removed from site for recycling or appropriate disposal.	Proponent / Site Personnel	Monthly
		Waste rock generated during mining activities must be placed in designated areas within the Mining Claim and utilised during rehabilitation where feasible.	Site Personnel / Proponent	Ongoing
		Site housekeeping must be maintained to prevent littering and accumulation of waste materials.	Employees / Contractors / Site Personnel	Weekly
		Personnel must be informed of waste management requirements and disposal procedures.	Proponent / Site Personnel	Operational Phase

Table 7: Dust Generation Management Measures

Impact Event	Desired Mitigation Outcome	Mitigation Measures	Responsibility	Monitoring
Dust generation	Minimise dust emissions and nuisance impacts	Vehicle speeds must be controlled on access roads and within operational areas.	Drivers / Site Personnel	Ongoing
		Existing access roads and tracks must be utilised to minimise unnecessary surface disturbance.	Drivers / Site Personnel	Ongoing
		Water must be applied to operational areas and access roads when excessive dust is generated.	Proponent / Site Personnel	As Required
		Loading, hauling, and stockpiling activities must be managed to minimise dust generation.	Employees / Contractors / Site Personnel	Ongoing
		Unnecessary vegetation clearing and surface disturbance must be avoided.	Site Personnel / Employees	Ongoing
		Complaints relating to excessive dust generation must be investigated and corrective measures implemented where required.	Proponent / Site Personnel	As Required
		Vehicles transporting mineralised material must be covered to prevent material loss and dust generation during transport.	Drivers / Contractors	Ongoing

Table 8: Faunal Disturbance Management Measures

Impact Event	Desired Mitigation Outcome	Mitigation Measures	Responsibility	Monitoring
Faunal disturbance	Minimise disturbance to wildlife and livestock within and	Deliberate disturbance, hunting, trapping, or harming of wildlife by personnel is prohibited.	Employees / Contractors / Site Personnel	Ongoing

surrounding the project area	Operational activities must remain confined to approved activity areas.	Site Personnel / Employees / Contractors	Ongoing
	Vehicle speeds must be controlled to reduce the risk of collisions with wildlife and livestock.	Drivers / Site Personnel	Ongoing
	Bird nests, dens, and other sensitive wildlife habitats identified within operational areas must not be disturbed.	Site Personnel / Employees	Ongoing
	Waste must be managed appropriately to avoid attracting wildlife to operational areas.	Employees / Contractors / Site Personnel	Weekly
	Any injured wildlife observed as a result of project activities must be reported to the relevant authorities or conservancy representatives.	Proponent / Site Personnel	As Required
	Personnel must be made aware of the ecological importance of the Okangundumba Conservancy and the need to protect wildlife resources.	Proponent / Site Personnel	Operational Phase

Table 9: Noise Management Measures

Impact Event	Desired Mitigation Outcome	Mitigation Measures	Responsibility	Monitoring
Noise impacts	Minimise noise disturbance to surrounding land users, wildlife, and livestock	Operational activities must be undertaken during daylight hours.	Site Personnel / Proponent	Ongoing
		Vehicle speeds and equipment operation must be controlled to minimise unnecessary noise.	Drivers / Site Personnel	Ongoing
		Machinery and equipment must be maintained in good working	Employees / Contractors / Site Personnel	Monthly

		condition to reduce excessive noise emissions.		
		Unnecessary idling of vehicles and equipment must be avoided.	Drivers / Operators	Ongoing
		Community complaints relating to excessive noise must be investigated and corrective measures implemented where excessive noise is identified.	Proponent / Site Personnel	As Required
		Personnel must comply with occupational health and safety requirements relating to noise exposure where applicable.	Employees / Contractors	Ongoing

Table 10: Traffic and Access Management Measures

Impact Event	Desired Mitigation Outcome	Mitigation Measures	Responsibility	Monitoring
Traffic and access impacts	Maintain safe and efficient access to the project area	Existing access roads and tracks must be utilised to minimise unnecessary land disturbance.	Drivers / Site Personnel	Ongoing
		Vehicle speeds must be controlled on the C43 road, access roads, and within operational areas.	Drivers / Site Personnel	Ongoing
		All vehicles and equipment must be operated by competent and authorised personnel.	Proponent / Drivers / Operators	Ongoing
		Vehicles transporting mineralised material must be appropriately loaded and secured to prevent spillage during transport.	Drivers / Contractors	Ongoing
		Personnel must remain aware of livestock, wildlife, and other road users when travelling to and from the Mining Claim area.	Drivers / Site Personnel	Ongoing
		Access roads must be maintained in a safe condition where	Proponent / Site Personnel	As Required

		deterioration resulting from project activities is identified.		
		All drivers must comply with applicable Namibian road traffic legislation and site safety requirements.	Drivers / Contractors	Ongoing

Table 11: Occupational Health and Safety Measures

Impact Event	Desired Mitigation Outcome	Mitigation Measures	Responsibility	Monitoring
Occupational health and safety risks	Promote a safe working environment and prevent injuries	Appropriate Personal Protective Equipment (PPE) must be provided and worn by all personnel.	Proponent / Employees / Contractors	Daily
		Personnel must receive safety induction and awareness training before commencing work.	Proponent / Site Personnel	Prior to commencement and as required
		First aid kits must be available and maintained at the site.	Proponent / Site Personnel	Monthly
		Adequate drinking water and sanitation facilities must be provided for personnel.	Proponent	Ongoing
		All equipment and machinery must be operated by competent and authorised personnel.	Operators / Contractors	Ongoing
		Unsafe acts, unsafe conditions, and near-miss incidents must be reported and addressed immediately.	Employees / Contractors / Site Personnel	Ongoing

		Emergency contact details and emergency procedures must be communicated to all personnel.	Proponent / Site Personnel	Operational Phase
		Work areas must be kept clean and free from unnecessary hazards.	Employees / Contractors / Site Personnel	Weekly
		Appropriate warning signs and safety signage must be displayed within operational areas.	Proponent / Site Personnel	Monthly

Table 12: Heritage Resource Management Measures

Impact Event	Desired Mitigation Outcome	Mitigation Measures	Responsibility	Monitoring
Disturbance of heritage resources	Protect archaeological, cultural, and heritage resources	Personnel must remain alert for potential heritage resources during project activities.	Employees / Contractors / Site Personnel	Ongoing
		If archaeological material, graves, artefacts, fossils, or other heritage resources are discovered, all work in the affected area must cease immediately.	Employees / Contractors / Site Personnel	As Required
		The discovery area must be clearly marked and protected from further disturbance.	Site Personnel	As Required
		The National Heritage Council of Namibia and relevant authorities must be notified of the discovery.	Proponent / Site Personnel	As Required
		Work may only resume following guidance or approval from the relevant authority.	Proponent	As Required
		All personnel must be informed of the heritage chance-find	Proponent / Site Personnel	Operational Phase

		procedure before commencement of activities.		
--	--	--	--	--

Table 13: Community Interaction and Land Use Management Measures

Impact Event	Desired Mitigation Outcome	Mitigation Measures	Responsibility	Monitoring
Community interaction and land use disturbance	Promote positive relationships with surrounding communities and land users	Personnel must respect surrounding land users, communal grazing activities, and conservancy resources.	Employees / Contractors / Site Personnel	Ongoing
		Project activities must remain within the approved Mining Claim boundary and designated operational areas.	Proponent / Site Personnel	Ongoing
		Unauthorised access to surrounding properties, homesteads, and grazing areas must be avoided.	Employees / Contractors / Site Personnel	Ongoing
		Communication with the Okangundumba Conservancy, Ombombo Traditional Authority, and affected land users must be maintained where project-related issues arise.	Proponent	As Required
		Community complaints and grievances must be recorded, investigated, and addressed promptly.	Proponent / Site Personnel	As Required
		Access routes used by local communities and livestock must not be unnecessarily obstructed.	Site Personnel / Drivers	Ongoing
		Employment opportunities should be made available to suitably qualified local	Proponent	Operational Phase

		residents where vacancies arise.		
--	--	----------------------------------	--	--

Table 14: Rehabilitation and Closure Management Measures

Impact Event	Desired Outcome	Mitigation Measures	Responsibility	Monitoring
Disturbed operational areas	Restore disturbed areas to a stable and environmentally acceptable condition	Rehabilitation planning must be incorporated throughout the project lifecycle.	Proponent	Operational Phase
		Disturbance must be limited to areas required for project activities.	Site Personnel / Employees / Contractors	Ongoing
		Topsoil stockpiled during site preparation must be preserved for rehabilitation purposes.	Proponent / Site Personnel	Ongoing
		Excavated pits and trenches that are no longer required must be backfilled where practicable and safe to do so.	Proponent / Site Personnel	Closure Phase
		Waste materials, scrap metal, equipment, and temporary structures must be removed from the site upon completion of activities.	Proponent / Contractors	Closure Phase
		Stockpiled topsoil must be redistributed over disturbed areas where rehabilitation is undertaken.	Proponent / Site Personnel	Closure Phase
		Disturbed surfaces must be stabilised to minimise erosion and safety risks.	Proponent / Site Personnel	Closure Phase
		Rehabilitation measures must aim to restore the area as close as reasonably possible to its pre-disturbance condition.	Proponent	Closure Phase

		A final site inspection must be conducted to verify that rehabilitation and closure measures have been implemented.	Proponent / Relevant Authorities	Closure Phase
--	--	---	----------------------------------	---------------

## 6 MONITORING REQUIREMENTS

Environmental monitoring forms an important component of implementation of this Environmental Management Plan (EMP) and provides a mechanism for evaluating environmental performance associated with activities undertaken on Mining Claim 68193.

Monitoring activities should focus on verifying implementation of mitigation measures, identifying environmental issues requiring corrective action, and promoting continued compliance with Environmental Clearance Certificate conditions and applicable environmental legislation.

Monitoring activities should remain practical and proportionate to the scale of the proposed project. Monitoring observations should be documented, and corrective actions implemented where environmental concerns or non-compliances are identified.

**Table 15** presents the environmental monitoring requirements applicable to the proposed project.

**Table 15: Environmental Monitoring Requirements**

Aspect	Monitoring Indicator	Frequency	Responsibility
Vegetation Disturbance	Extent of vegetation clearing and disturbance outside approved operational areas	Monthly	Site Personnel / Proponent
Soil Disturbance and Erosion	Evidence of erosion, unstable slopes, or excessive soil disturbance	Monthly	Site Personnel / Proponent
Dust Generation	Visible dust levels and dust-related complaints	Ongoing	Drivers / Site Personnel
Waste Management	Waste storage, disposal practices, and site housekeeping conditions	Weekly	Site Personnel / Contractors
Groundwater Protection	Evidence of fuel spills, leakages, or contamination incidents	Ongoing	Site Personnel / Proponent

Water Use	Water consumption and evidence of wastage	Monthly	Site Personnel / Proponent
Faunal Disturbance	Wildlife or livestock disturbance incidents associated with project activities	Ongoing	Site Personnel / Employees
Noise Impacts	Excessive noise generation and related complaints	Ongoing	Site Personnel
Traffic Management	Vehicle speeds, road conditions, and transport-related incidents	Monthly	Drivers / Site Personnel
Occupational Health and Safety	PPE usage, safety incidents, and compliance with safety procedures	Ongoing	Employees / Contractors / Site Personnel
Community Relations	Community complaints, grievances, and stakeholder concerns	As Required	Proponent / Site Personnel
Rehabilitation	Progress of rehabilitation measures and stability of rehabilitated areas	Quarterly	Proponent / Site Personnel

## 6.1 Environmental Monitoring and Compliance Oversight

Implementation and monitoring of environmental management measures contained within this EMP remain the responsibility of the Proponent, employees, and contractors involved in project activities associated with Mining Claim 68193.

Employees, contractors, and site personnel are responsible for complying with mitigation measures during project activities, while the Proponent remains responsible for overall environmental compliance and implementation of environmental commitments.

Where required, an Environmental Control Officer (ECO) or designated environmental representative may assist with inspections, monitoring activities, and compliance verification.

Relevant authorities may undertake compliance inspections and regulatory oversight to verify adherence to Environmental Clearance Certificate conditions, applicable legislation, and environmental management commitments.

## **7 INCIDENT REPORTING AND CORRECTIVE ACTIONS**

Environmental incidents may occur during project activities and should be managed promptly to minimise potential environmental and social impacts.

Environmental incidents may include:

- Fuel, oil, or chemical spills;
- Excessive dust generation;
- Waste management non-compliance;
- Community complaints;
- Wildlife disturbance incidents;
- Occupational health and safety incidents; and
- Discovery of heritage or archaeological resources.

Where an environmental incident occurs, the following actions must be implemented:

- Stop the activity causing the incident where safe to do so;
- Contain and control the incident to prevent further impacts;
- Implement corrective measures to minimise environmental damage;
- Record details of the incident and actions taken;
- Notify relevant authorities where required by law or permit conditions; and
- Monitor the effectiveness of corrective measures and implement additional actions where necessary.

Corrective actions should be implemented as soon as reasonably possible following identification of environmental incidents or non-compliance.

## **8 REVIEW AND UPDATE OF THE EMP**

This Environmental Management Plan (EMP) is intended to remain a practical environmental management tool throughout the life of the project.

The EMP should be reviewed and updated where:

- Project activities change significantly;
- Additional environmental information becomes available;
- Regulatory requirements are amended;
- Environmental monitoring identifies additional management requirements;
- Environmental incidents indicate the need for improved management measures; or
- Environmental Clearance Certificate conditions are amended.

Any revisions to the EMP should ensure that environmental management measures remain appropriate and effective for the activities being undertaken on Mining Claim 68193.

## 9 CONCLUSION

This Environmental Management Plan (EMP) has been prepared for the proposed small-scale mining activities for Base and Rare Metals on Mining Claim 68193 located in Omao Village, Opuwo District, Kunene Region, Namibia.

The EMP provides environmental management measures, monitoring requirements, rehabilitation commitments, and operational controls aimed at preventing or minimising potential environmental and social impacts associated with the proposed project.

The Proponent, Tjihoto, Uariongozu Marks, remains responsible for implementation of the mitigation measures and environmental commitments contained within this EMP, as well as compliance with applicable Environmental Clearance Certificate conditions and legal requirements.

Provided that the measures contained within this EMP are effectively implemented, the proposed project is expected to remain environmentally manageable and compatible with the surrounding environment.