



TEL.: (+264-61) 257411 ♦ FAX.: (+264) 88626368  
CELL.: (+264-81) 1220082  
PO BOX 11073 ♦ WINDHOEK ♦ NAMIBIA  
E-MAIL: gpt@thenamib.com

**To:** Chief Regional Officer  
P/Bag 2184  
Keetmanshoop  
Namibia

30 April 2026

**Re:** Environmental Management Plan for the existing operations of Amanzi Trails near Noordoewer, //Kharas Region Namibia

Dear Sir/Madam

Geo Pollution Technologies (Pty) Ltd was appointed by Amanzi Trails Namibia CC to compile an environmental management plan (EMP) for their camp operations near Noordoewer //Kharas Region (see location map on page 2). The EMP will be submitted to the Environmental Commissioner, Ministry of Environment, Forestry and Tourism, in support of an ECC.

**Project:** Environmental Management Plan for the existing operations of Amanzi Trails near Noordoewer, //Kharas Region Namibia

**Proponent:** Amanzi Trails Namibia CC

**Environmental Assessment Practitioner:** Geo Pollution Technologies (Pty) Ltd

The camp primarily serves adventure enthusiasts participating in canoe excursions along the Orange River, while also welcoming overnight guests and long-term campers seeking a tranquil riverside retreat. Only self-catering campsites are available, but a small kitchen and braai area do also provide basic food and beverage services. Infrastructure and amenities include 24 grassed campsites, communal ablution blocks, a scullery with hot water for dishwashing and cleaning, braai and sink facilities at campsites, reception area, lapa dining area and bar, manager's accommodation and various storage areas and sheds. Water for operations is sourced from the Orange River.

Normal activities associated with the operations of a tourism facility continue on a daily basis. This involves among others, tasks such as booking of guests, ordering food, beverages and cleaning materials, guest reception, preparation of food, maintenance of canoes and related equipment, cleaning, garden and grounds maintenance, and various office related activities. Operational activities are performed by a staff complement that includes skilled, semi-skilled and unskilled labour.

The regional council is invited to provide comment, if any, to the environmental consultant. The regional council will further be provided with an opportunity to provide input that will be considered in the drafting of the management plan. All comments can be sent to:

**Fax:** 088-62-6368 or **E-Mail:** amanzi@thenamib.com

Should you require any additional information please contact Geo Pollution Technologies at telephone 061-257411.

Sincerely,

**Geo Pollution Technologies**

**Quzette Bosman**

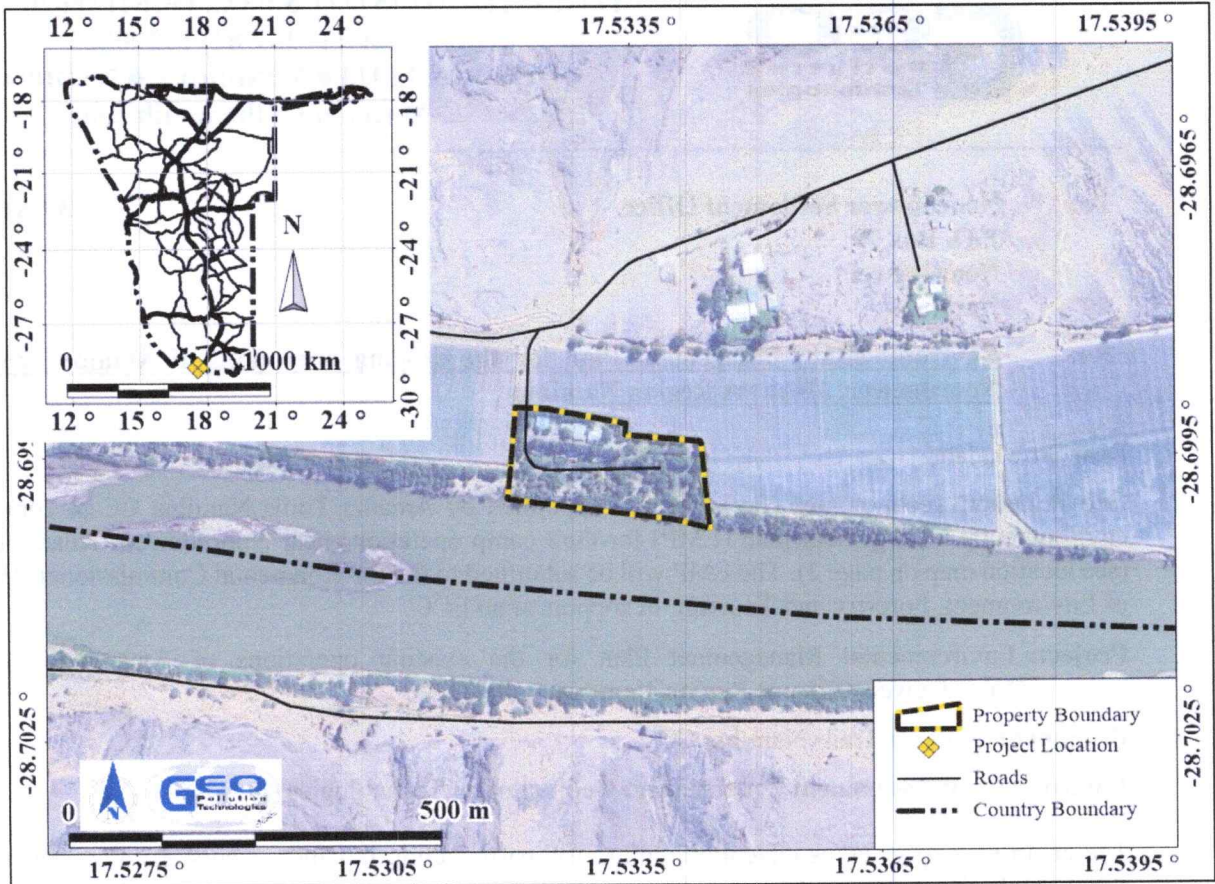
Social and Environmental Assessment Practitioner

*11Kharas Regional Council*  
*05/05/2026*

*[Signature]*

Directors:

COPY



**Project Location**

COPY