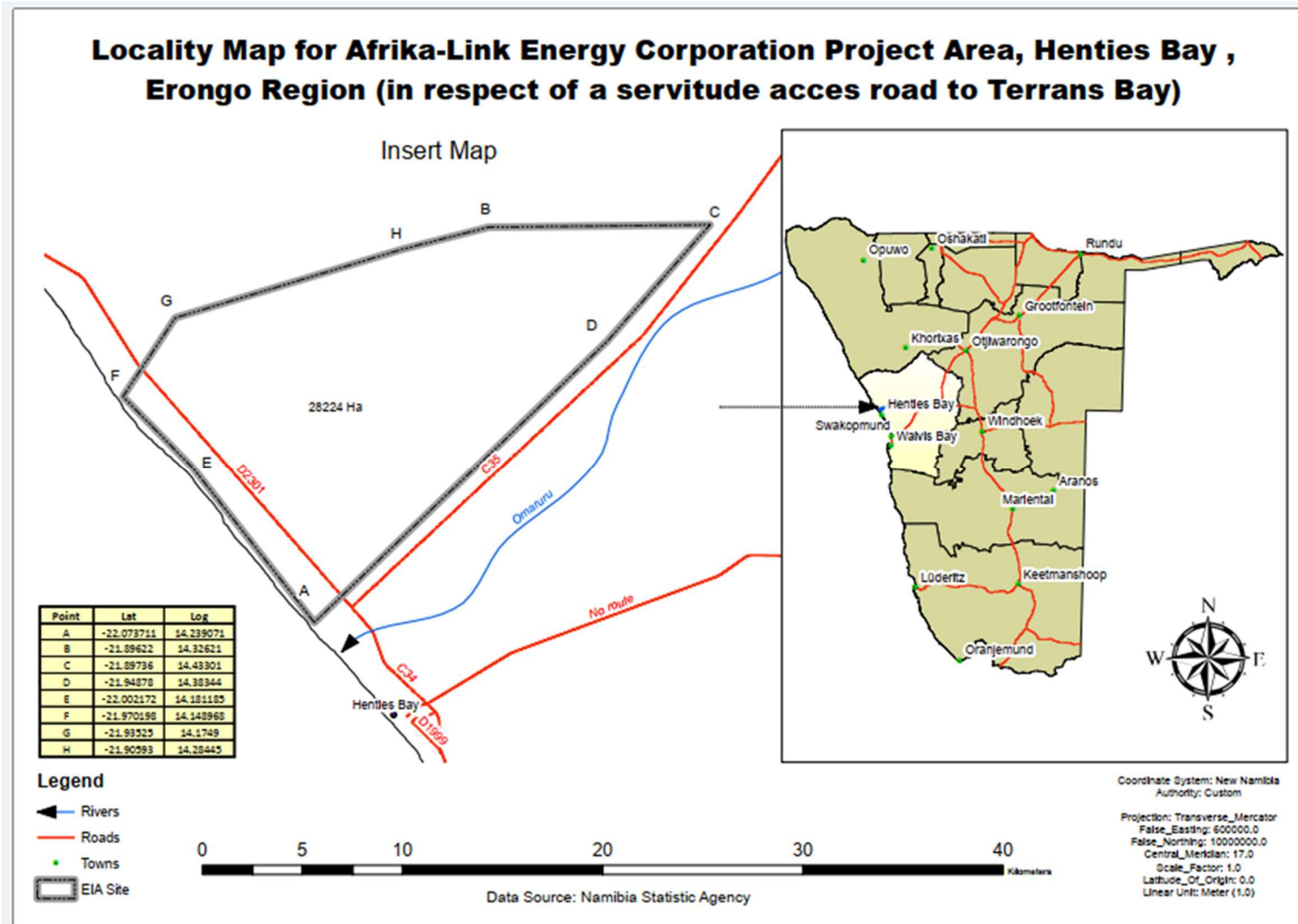
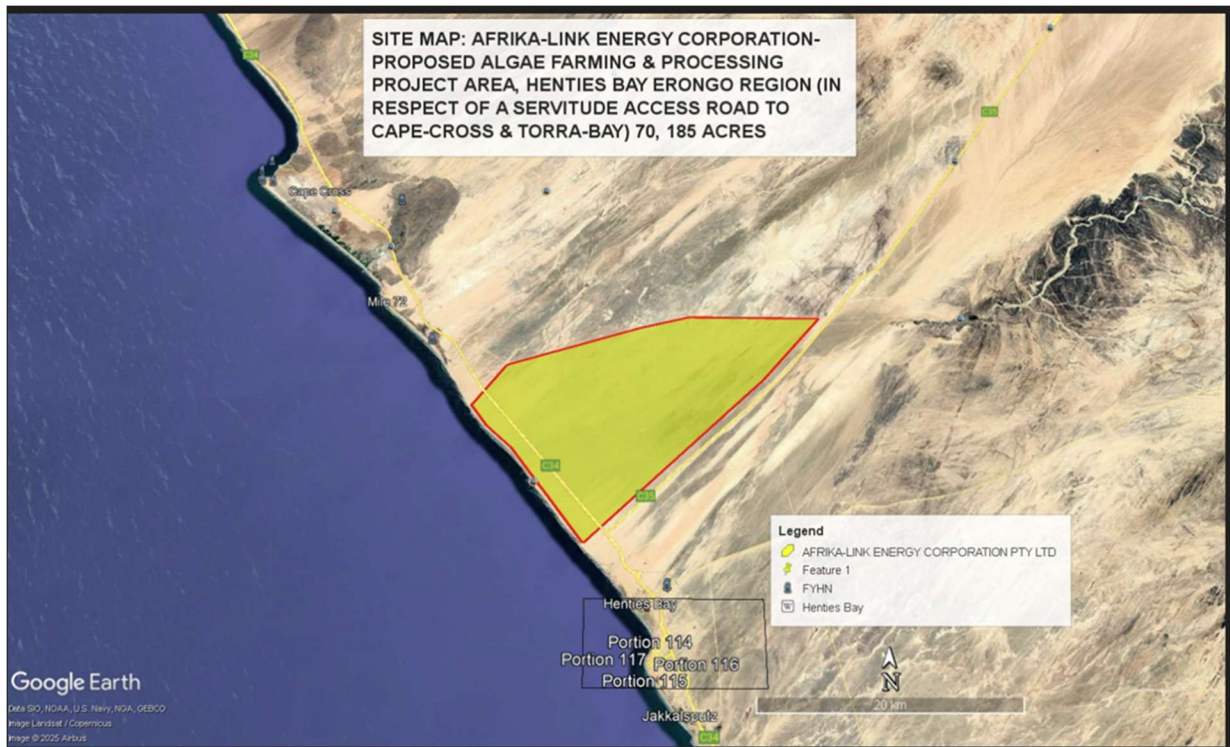


Figure 1: Locality Map of the Proposed Algae Farming and Refinery Project Area, Portion X, Henties Bay State Land (Dorob National Park), Erongo Region, Namibia, indicating site boundaries (~28,224 ha), proximity to Henties Bay, and access via the C34 coastal trunk road towards Terrace Bay.



- Along the C34 coastal trunk road, forming part of the Swakopmund–Henties Bay–Terrace Bay corridor
- Approximately 50 metres inland from the Atlantic Ocean coastline
- Within a relatively undeveloped section of State Land with minimal existing infrastructure or competing land uses

Figure 4: Project Site Location Map – Proposed Algae Farming and Processing Area, Henties Bay (Erongo Region)



Map illustrating the location and spatial extent of the proposed Afrika-Link Energy Corporation algae cultivation and processing site along the Henties Bay coastal corridor, including proximity to Cape Cross and Torra Bay, as well as access routes and surrounding infrastructure. The delineated area highlights the project footprint within the Namib coastal desert environment. **Source:** Courtesy of Erongo Consulting Group (2026); base map imagery from Google Earth.

This location provides direct access to marine resources (seawater), as well as connectivity to regional infrastructure and logistics networks.

Figure 5: Satellite Map of the Proposed Project Site, Portion X, Henties Bay State Land (Dorob National Park), Erongo Region, Namibia - illustrating the project boundary (~28,224 ha / ~70,185 acres), spatial extent, and proximity to the Atlantic Ocean and C34 coastal trunk road.



### 3.2.1 Geographic Coordinates (Approximate Site Centre)

The approximate central coordinates of the proposed project site are as follows:

- **Latitude:** -22.05770° (South)
- **Longitude:** 14.25485° (East)

These coordinates represent the geographic centroid of the development area and are used as a reference point for mapping, spatial analysis, and environmental assessment.

The project boundary extends beyond this central point and is defined by a series of surveyed coordinates outlining the full extent of approximately 28,224 hectares.

All spatial data is referenced in accordance with the WGS 84 coordinate system, ensuring compatibility with Geographic Information Systems (GIS), satellite imagery, and regulatory mapping requirements.

### 3.2.2 Site Extent and Spatial Coverage

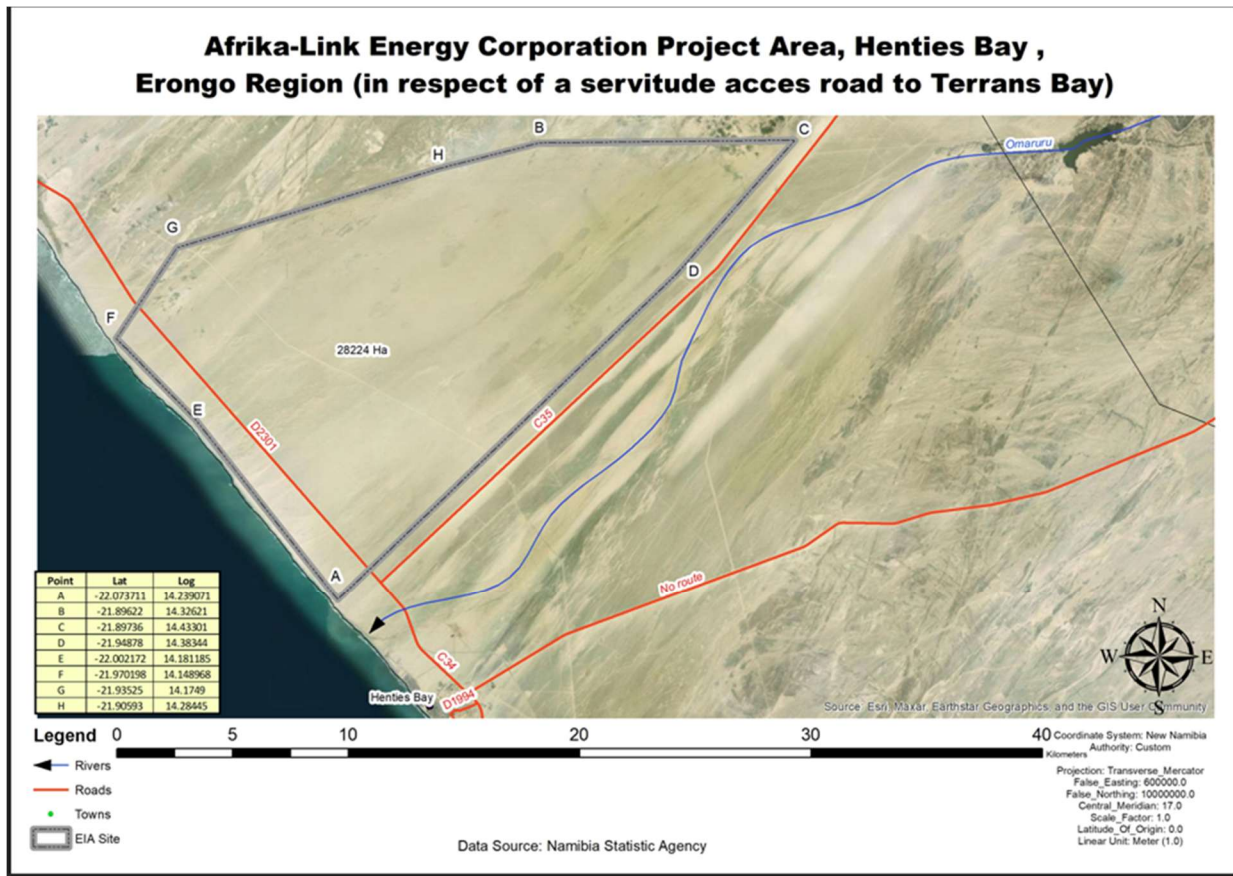
The proposed project occupies a total footprint of approximately:

- **28,224 hectares**

- Equivalent to approximately **282,240,000 m<sup>2</sup>**

This represents a large-scale, contiguous land parcel located within State Land in the Dorob National Park.

Figure 6: Henties Bay State Land & Project Area (Henties Bay Structure Plan, 2024)



Map illustrating the proposed Afrika-Link Energy Corporation algae cultivation and biorefinery project site (±28,224 ha) located north of Henties Bay in the Erongo Region. The figure shows the delineated project boundary (Points A–H), the designated state land extent in accordance with the 2024 Structure Plan, and the proposed servitude access road linking the site to Terrans Bay. Key regional infrastructure is indicated, including the C35, D2301, and C34 road networks, as well as ephemeral river systems and surrounding geographic features. Coordinates are presented in the Namibia Transverse Mercator projection.

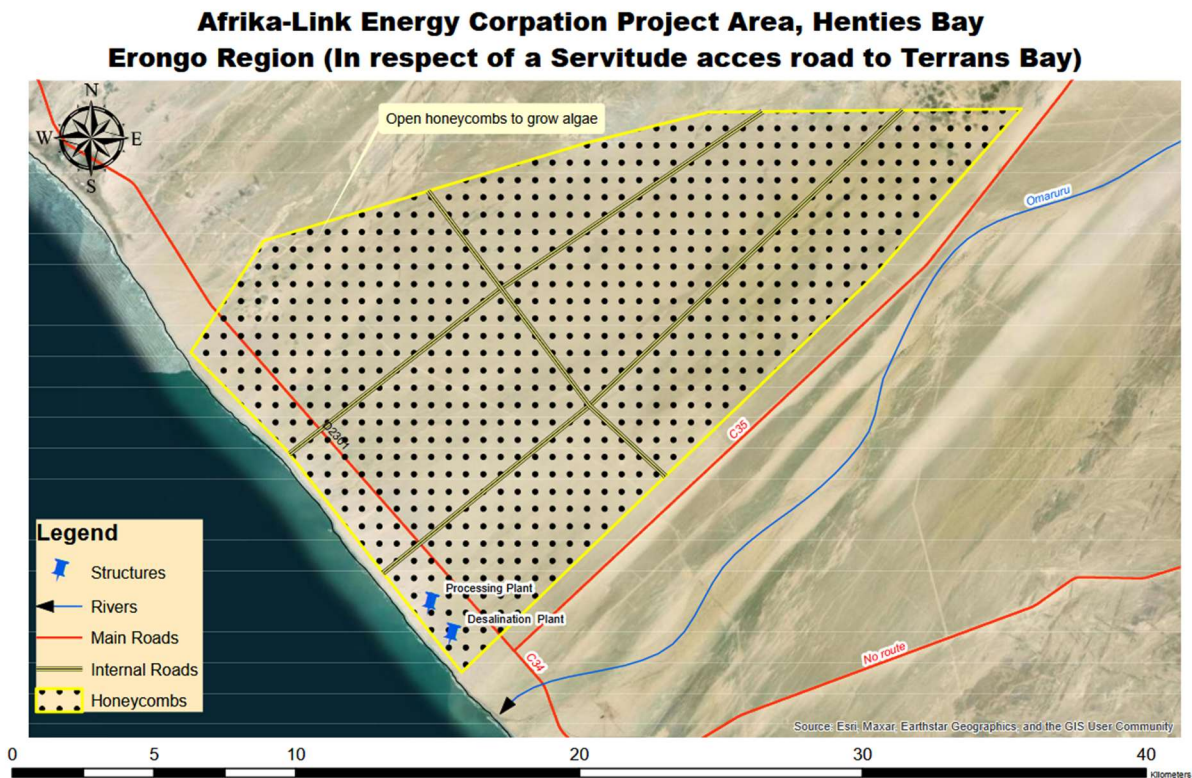
**Data sources:** Namibia Statistics Agency; **basemap:** Esri, Maxar, Earthstar Geographics.

## Spatial Characteristics

The site is characterised by:

- A **continuous and uninterrupted land area**, suitable for phased and integrated development
- Predominantly **flat to gently undulating terrain**, facilitating construction of large-scale algae cultivation systems
- Minimal existing infrastructure or competing land uses, reducing land-use conflict

Figure 7: Proposed Project Layout and Development Configuration – Algae Farming and Biorefinery, Henties Bay, Erongo Region, Namibia



Spatial layout of the proposed algae farming and biorefinery development at Henties Bay, illustrating the delineated project footprint, internal access road network, and planned infrastructure components including the processing plant and desalination facility. The layout highlights the modular “honeycomb” cultivation system for algae production, designed to optimise land use efficiency and operational scalability. The site is strategically positioned along the coastal corridor with direct access to seawater, supporting integrated cultivation and processing within a controlled development footprint.

**Source:** Erongo Consulting Group, 2026.

## Development Implications

The scale and configuration of the site enable:

- Establishment of extensive algae cultivation fields (pond systems)
- Integration of centralised processing and biorefinery facilities
- Development of support infrastructure, including water distribution networks, internal roads, and utilities
- Potential for phased expansion and modular development over time