

## **APPENDIX 7: ENVIRONMENTAL MANAGEMENT PLAN**

**Environmental Management Plan**  
**Refurbishment for the Upgrade, Operation and Management**  
**of**  
**Mavunje Lodge**



March 2026

---

Compiled For:

Sawari Lodge Collections (Pty) Ltd  
Mavunje Lodge  
Ngonga Area

## Table of Contents

<b>1. Background</b>	1
<b>2. Objective</b>	1
<b>3. Approach and Methodology</b>	1
<b>4. Roles and Responsibilities</b>	2
4.1 The Proponent	2
4.2 Site Administrator	2
4.3 The Contractor or Subcontractor	3
4.4 Environmental Control Officer	3
<b>5. Site Map</b>	3
<b>6. Management Plan</b>	3
<b>7. Legislative Compliance Requirements</b>	16
<b>8. Training and Awareness</b>	17
<b>9. Incident Reporting and Resolution</b>	18
<b>10. Environmental Monitoring and Audits</b>	18
<b>11. Conclusion</b>	18
<b>12. Recommendations</b>	18
<b>Appendix</b>	19

## **1. Background**

The development of this document follows the scoping assessment, that was conducted to evaluate the environmental, social, and economic impacts associated with the proposed refurbishment and upgrade of Mavunje Campsite into a low-density lodge facility. The referenced evaluation thoroughly examined the proposed project's positive and negative impacts, assessed their significance, and determined appropriate mitigation strategies. It is imperative that these strategies be developed into a well-structured framework to guarantee the project's effective implementation. It is a recognized standard practice and legal requirement to formulate a detailed environmental management plan, which must incorporate these measures while offering clear and actionable guidelines for the effective implementation of the proposed development framework.

This document serves as the environmental management plan (EMP) for the proposed activity of the refurbishment, upgrade, operation, and management of Mavunje Lodge.

## **2. Objective**

This EMP is primarily designed to facilitate the structured execution of proposed activities while addressing and mitigating the significant impacts identified during the scoping assessment. Specifically, the EMP is designed:

- To mitigate adverse effects arising from identified environmental and social factors
- Ensuring the preservation of the environment and its interconnected social systems against potential degradation.

## **3. Approach and Methodology**

To achieve the objectives outlined in the EMP, it is imperative to mitigate all substantial impacts of a high to very high severity to a medium or low level for adverse effects, while maintaining high to very high levels for beneficial impacts. Accordingly, this document elaborates on the proposed mitigation strategies and reevaluates the significance of impacts in light of the possible implementation of these measures.

Additionally, it is not enough to simply establish mitigation measures; however also crucial to define the corresponding roles and responsibilities, ensuring alignment and specifying the timing, frequency and where feasible the cost for implementing these measures. This outlines the approach and methodology employed in the development of this EMP.

## 4. Roles and Responsibilities

This section establishes several key roles towards ensuring the implementation of this EMP. These roles are:

### 4.1 The Proponent

The Proponent (Sawari Lodge Pty Ltd) remains overall responsible for the implementation of this EMP across all phases of the proposed activity. Key areas of responsibilities are:

- Implementation of all requirements set forth in the EMP, inclusive of legislative, administrative and financial requirements.
- Ensure the monitoring, review, and update of the EMP at required intervals.
- Ensure other relevant stakeholders if any, are updated and informed on the implementation of EMP (i.e. local headmen, and village development representatives, conservancy management committee).
- Ensure that all the required environmental valid licenses and permits are obtained as required.
- Ensure environmental inspections, audits and monitoring of environmental factors as carried out.
- Produce reports on environmental and social performance as per monitoring plan at stipulated intervals.
- Ensure that operations are reviewed and new impacts identified and embedded from unforeseen activities and recommend necessary measures for avoidance, or mitigation.

### 4.2 Site Administrator

The site administrator or manager position refers to the designation responsible for managing operations onsite. The role may refer to the Proponent where such is responsible for day-to-day operations at the lodge. Their responsibilities will involve,

- Establishing and maintaining an information record system on implementation of EMP.
- Liaise with relevant authorities and contractors regarding required compliance.
- Providing recommendations for remedial action in the event of any non-compliances.
- Ensure that contractors, subcontractors and workers and even official visitors to the site are aware of the environmental and health and safety conduct required.
- Ensure that the site is utilised as per set out layout plan
- Develop training schedule and awareness programs for site workers and visitors

### 4.3 The Contractor or Subcontractor

The contractor subcontractor is a service provider responsible for executing a particular service on behalf of the proponent. During the execution of these services, the agent undertakes activities that could significantly affect the environment, society, or economy. Consequently, the agent is obligated to comply with established environmental and social controls. Their responsibility is to be fully aware of the specific impacts within their area of activity, thereby ensuring that their personnel are both informed about and adhere to established controls.

### 4.4 Environmental Control Officer

The role of an Environmental Control Officer (ECO) is critical to the implementation of an environmental management plan, however, small to medium operations incur limitations to employing such designations on permanent basis. Therefore, in terms of ensuring implementation of requirements on a day-to-day basis, these will reside under the Proponent and their site administrator (where provided). The role of ECO is recommended to an environmental assessment practitioner to offer intermittent auditing and inspections towards ensuring compliance to the ECC requirements.

## 5. Operational Site Map

The purposes of operations, a site map is enclosed as appendix EMP 1 to this report. The map outlines the infrastructural layout of the site however with changes recommended in this report.

## 6. Management Plan

Implementation of this EMP rests on the Proponent in liaison with other designates described in the report. Further and above, it is required as follows:

- Reporting is carried out as prescribed and required by competent authorities
- Obtaining of all required permits as outlined in this EMP
- Review and update of this EMP document as required by competent authority.

The detailed implementation plan for this Environmental Management Plan is provided in the preceding table.

**PRE- CONSTRUCTION PHASE**

Aspect/Activity	Impact	Mitigation	Frequency and Scheduling	Responsible	Nature	Initial Significance	Extent	Duration	Severity	Likelihood	Revaluated Significance
Planning and design	Project is developed on solid sustainability principles.	The development approach is founded on utilizing the existing footprints with minimal expansion, and the use of natural materials such as timber and thatch. Site layout has been designed to minimize disturbance footprint into new areas. However, the following still need review to enhance suitability:  <ol style="list-style-type: none"> <li>The proposed septic tank as per the layout should be relocated away from the wetland to an upland site.</li> <li>Include the safe decommission of existing septic tanks in the plan.</li> </ol>	Once-off/  Site planning and design	Proponent/EAP	+Ve	10	1	3	3	3	10
Securing land tenure for investment.	Loss of investment opportunity from unfavorable land lease terms/duration	Parties to agree a lease duration that adequately consider the time required for recovering the investment and sustaining the operations. Up to 99 years can be issued on lease period however subject to ministerial approval for any period beyond 10 years.	Once-off  Prior Investment Commitments.	Proponent/  Communal Land Board/  Traditional Authority Leaseholder	-Ve	6	1	1	1	1	4

Legal requirements	Non-compliance with legal requirements.	Establish all key legal requirements for the proposed activity for compliance.	Once-off EIA process	EAP Proponent	-Ve	6	1	1	1	1	4
Standard protocol for operating in Conservancy Area	Benefit sharing and local capacity development in entrepreneurship	It is essential to establish a fair and balanced agreement between all parties to ensure the effective and successful operation of the facility.	Once off and renewal on set intervals	Proponent Conservancy MC	+Ve	11	2	3	3	4	12

### CONSTRUCTION PHASE

Aspect/Activity	Impact	Mitigation Measure	Frequency and Scheduling	Responsible	Nature	Initial Significance	Extent	Duration	Severity	Likelihood	Revaluated Significance
Construction of facilities (reception, kitchen, guestrooms, restaurant, service building, swimming pool,	Removal and destruction of protected and endemic species.	All protected species on the site should be identified and marked accordingly. The few identified that may occur are <i>Colophospermum mopane</i> , and <i>Combretum imberbe</i> .	Once-off Prior to site works	Proponent	-Ve	6	1	1	1	1	4
		Contractors are made aware of protected plants/trees.	Prior to site work and as necessary	Proponent							
		Place signage for easy identification.	Prior to site work and as necessary	Proponent							

Aspect/Activity	Impact	Mitigation Measure	Frequency and Scheduling	Responsible	Nature	Initial	Significance	Extent	Duration	Severity	Likelihood	Revaluated	Significance
covered parking area)	Drive-away wildlife in proximity to the site	Ensure all machinery and equipment are in good operational condition to prevent excessive noise.	Prior to site work and as necessary	Contractor	-Ve	7	1	1	1	1	2	5	
		Avoid unnecessary use of machinery and equipment that produce excessive noise and vibrations.	Throughout phase	Contractor									
		The use of machinery to be restricted to daytime hours											
	Stimulate erosion of topsoil	Ensure multipurpose access roads for various uses for large delivery vehicles and standard vehicles.	Once off and as required	Proponent	-Ve	7	1	1	1	1	1	4	
		All vehicles strictly use demarcated access roads.	Throughout phase	Contractor									
		Ensure displaced soil materials are well stabilized to avoid causing erosion.	As necessary for any excavation works	Contractor									
	Alter local air ambience conditions	Avoid unnecessary use of machinery and equipment that use petrochemicals.	Throughout Phase	Contractor	-Ve	7	1	1	1	1	1	4	
Ensure all machinery and equipment are in good operational condition to prevent excessive noise.													
Pollution of soil and groundwater resources	No refilling points located within 50m to the stream/channel.	Throughout Phase	Contractor Proponent	-Ve	7	1	1	1	1	2	5		

Aspect/Activity	Impact	Mitigation Measure	Frequency and Scheduling	Responsible	Nature	Initial Significance	Extent	Duration	Severity	Likelihood	Revaluated Significance
		Acquire drip trays and ensure utilization to prevent spillages or where there are leakages from machinery or vehicles, or alternatively, pave areas where such activities take place.									
		Assess sources of spillage or leakage and seek to isolate the cause immediately.									
		Contaminated soil must be cleaned up and disposed of as hazardous waste.									
		Servicing vehicles and machinery must be carried out in designated areas with impermeable surfaces									
	Intensify the GHG emissions, thereby leading to aggravating the effects of climate change.	No equipment or machinery is kept running unnecessarily. These include among other vehicles, generators, compactors, compressors, and welding torches.	Throughout Phase	Contractor	-Ve	9	1	1	1	2	5
		All vehicles and machinery to be maintained in good working conditions through regular service.									
		All machines observed to release excessive smoke to be switched off, and necessary repairs be implemented before reused.									

Aspect/Activity	Impact	Mitigation Measure	Frequency and Scheduling	Responsible	Nature	Initial	Significance	Extent	Duration	Severity	Likelihood	Revaluated	Significance
Theft of material will undermine realization of the proposed development on time.	Ensure 24-hour security services to ensure safety of the site.	Throughout Phase	Proponent	-Ve	5	1	1	1	1	1	4		
	Maintain inventory records of construction material onsite.											Contractor	
	Collaborate with local stakeholders to build trust and sensitization on project benefits to the community, region and the country.											Proponent	
Environmental degradation from unmanaged solid waste.	Demarcate adequate waste collection sites.	Prior to site works	Contractor	-Ve	10	1	1	1	1	2	5		
	Account for different types of waste generated onsite e.g. plastics, metals, rubble, paper of various textures.	Throughout the phase											
	Designate a single disposal site within the Lodge area.	Once-off											
	Allow for reuse of some redundant materials such as containers where there is opportunity.	Where feasible	Proponent										
Interruption to work schedules for project realization	Ensure workers are remunerated on time.	Throughout Phase	Contractor	-Ve	6	1	1	1	1	1	4		
	Compliance with labor requirements for the construction sector.		Proponent										
Potential Injury or fatality to workers	All construction workers are provided with appropriate and necessary PPE.	Throughout Phase	Contractor	-Ve	9	1	1	1	1	2	5		

Aspect/Activity	Impact	Mitigation Measure	Frequency and Scheduling	Responsible	Nature	Initial Significance	Extent	Duration	Severity	Likelihood	Revaluated Significance
		<p>Ensure that all equipment is maintained in good working order to prevent risk of injuries due to malfunctioning.</p> <p>Ensure availability of first aid onsite.</p> <p>Maintain good housekeeping in all construction areas.</p> <p>Erect sign boards and use of danger tapes in various areas to warn of potential hazards.</p> <p>Allow trained personnel to use specialized power equipment.</p> <p>Allow time for rest and refresh for workers (breaks for meals and hydration).</p>				8					8
	Liabilities of safety and health incidents	<p>Address contractor obligations towards their employees in precontracts for health and safety liabilities.</p> <p>Require pre-engagement medical checkups from contractors.</p>	Precontract signing	Proponent	-Ve	6	1	1	1	1	4
	Utilization of the surrounding area for	Provide lavatory facilities for workers in accordance with labor requirements.	Throughout Phase	Contractor Proponent		8	1	1	1	1	4

Aspect/Activity	Impact	Mitigation Measure	Frequency and Scheduling	Responsible	Nature	Initial	Significance	Extent	Duration	Severity	Likelihood	Revaluated	Significance
	personal sanitation in the absence of basic facilities.												
	Opportunities for contractors and locals	Prioritize locals in both skilled and unskilled job opportunities.	Throughout the phase	Contractor	+Ve	9	3	2	3	3	3	11	
		Agree with contractor on involvement of locals	Once off and as necessary	Proponent									
Lighting of lodge facilities	Nuisance to neighbors	Install low-intensity white light low-energy LED lamps as ideal for ambient lighting in tents.	Once off during construction and	Contractor	-Ve	9	1	1	1	1	1	4	
		Reduce glare by restricting beams to downward cones.	as necessary	Proponent									
Security fencing of the site	Alleviate exposure to excessive human-wildlife conflict incidents.	Engage the conservancy management committee on dos and don'ts in the conservation area.	Engagement on JV agreement	Proponent	+Ve	7	1	3	2	3	3	9	
		Discuss the possibilities of fencing if necessary to alleviate HWC											
	Interfere with wildlife movement within a wildlife corridor	Explore alternative ways of managing HWC should erecting some form of barrier around the area not acceptable conduct in the area.	Post JV Engagements	Proponent		8	1	2	1	1	1	5	

**OPERATION PHASE**

Aspect/Activity	Impact	Proposed Mitigation Measure	Frequency and Scheduling	Responsible	Nature	Initial Significance	Extent	Duration	Severity	Likelihood	Revaluated Significance	
Operation of the lodge encompassing the following activities, lodging of visitors, day visitors, leisure activities, serving food, service and maintenance of facilities.	Pollution of the river ecosystem.	All wastewater flows should be conveyed away from the stream and provided for in the septic system.	Site structure and layout design	Proponent	-Ve	12	1	1	1	1	4	
		The septic system should be monitored to ensure no overflows and that pumping is carried out timely.	Throughout	Site Administrator Site Administrator								
		Ensure reticulating system is intact to prevent leaks into the local environment from broken piping.										
	Unhygienic landscape conditions and a nuisance.		Establish refuse collecting points across the site and within facilities.	Once off and as necessary	Site administrator	-Ve	8	1	1	1	1	4
			Provide for waste separation according to types including food waste, plastics, paper, cans for improved handling and management.									
			Consider recycling of recyclable waste such as plastics, cans etc. while that such as food can be reused for composting or alternatively supply to other users.	Throughout Phase	Proponent							
			No waste should be discarded at an unmanaged site but secured in a fence area.		Proponent							

Aspect/Activity	Impact	Proposed Mitigation Measure	Frequency and Scheduling	Responsible	Nature	Initial Significance	Extent	Duration	Severity	Likelihood	Revaluated Significance
	Increased employment opportunities	Prioritize locals in both skilled and unskilled job opportunities.	Throughout Phase	Proponent	+Ve	12	3	3	3	3	12
		Collaborate with local leadership on list of potential candidates for employment.									
	Provide opportunities for locals and conservancy	Establish partnership with local groups such as cooperative or local organizations on business opportunities.	Land security negotiation and Throughout Phase	Proponent	+Ve	11	2	4	3	3	12
	Modify the behavior and distribution of wildlife within the area.	Unauthorized or unplanned movement of individuals through the site and surroundings should be controlled.	Throughout Phase	Proponent Site Administrator	-Ve	9	1	1	1	1	4
		Place necessary signage where possible to prevent people interference with wildlife behavior.	Throughout Phase	Site Administrator							
	Increase incidents of human wildlife conflict	All leisure activities in the surrounding to be professionally guided.	Throughout Phase	Proponent Site Administrator	-Ve	11	2	1	1	2	6
		Establish collaboration with MEFT (local Office) and Conservancy local offices on proper operations in conversations area.	Planning Phase and Throughout Phase	Proponent							
	Injury or illness of workers	Workers must be provided with appropriate and necessary PPE.	Throughout Phase	Proponent	-Ve	9	1	1	1	1	4

Aspect/Activity	Impact	Proposed Mitigation Measure	Frequency and Scheduling	Responsible	Nature	Initial Significance	Extent	Duration	Severity	Likelihood	Revaluated Significance
		Ensure that all equipment is maintained in good working order to prevent risk of injuries due to malfunctioning.		Proponent		8	1	1	1	1	4
		Ensure availability of first aid onsite.		Proponent							
		Maintain good housekeeping in all operation areas.		Site Administrator							
		Erect sign boards and use of danger tapes in various areas to warn of potential hazards.	As and when necessary	Site Administrator							
		Allow trained personnel to use specialized equipment.	Throughout Phase	Site Administrator							
		Allow time for rest and refresh for workers (breaks for meals and hydration).		Proponent							
		Ensure access to basic facilities		Proponent							
	Pollution of environment	Storage of hazardous substances must be controlled.	Throughout Phase	Site Administrator	-Ve	8	1	1	1	1	4
		Cautions use hazardous substances to ensure limited contact with open surfaces.		Site Administrator							
	The new site outlook.	Eyesore to aspirers of nature-based and traditional scenery	Maintain development footprint to disturbed areas and limit extension of new areas except where unavoidable.	Throughout Phase	Proponent	-Ve	6	1	1	1	1
Place signage, if necessary, as reminders to prevent extension of footprint.			Site Administrator								

Aspect/Activity	Impact	Proposed Mitigation Measure	Frequency and Scheduling	Responsible	Nature	Initial Significance	Extent	Duration	Severity	Likelihood	Revaluated Significance
	Appeal of modern facilities and leisure.	Promote the facility's profile and the range of services provided across spectrum of platforms, local to international.		Proponent	+Ve	13	4	3	3	3	13
The abstraction of water from a borehole for use can be overstretched without cognizance of resource conservation.	Water resource depletion	Promote awareness and implement conservation practices for water use at the site.	Throughout Phase	Site Administrator Proponent	-Ve	6	1	1	1	1	4

**DECOMMISSION PHASE**

Aspect/Activity	Impact	Proposed Mitigation Measure	Frequency and Scheduling	Responsible	Nature	Initial Significance	Extent	Duration	Severity	Likelihood	Revaluated
Post lodge operation land use	Deterioration of the site due to undetermined post land use decision.	Engage stakeholders on long terms planning for post operations land use that is sustainable. Continuation of the operations with high local community involvement or ownership or partnership may provide a feasible option that is explorable in the lease agreements.	Planning Phase and as necessary during Operation for end of lease agreement.	Proponent	-Ve	9	1	2	2	1	6

## 7. Legislative Compliance Requirements

The following key legislative requirements need to be met prior or at commencement of the operation of the activity.

*Table 7-1 Legislative Compliance requirements*

<b>Legislative Instrument</b>	<b>Requirement</b>	<b>Timing/Institution</b>	<b>Institution Mandated</b>	<b>Responsible</b>
Environmental Management Act No. 7 Of 2007 And Environmental Impact Assessment Regulations GN of 2012 and Environmental Assessment Policy of 1995	Environmental clearance and entrenching sustainable development principles in the project.	Addressed through this EIA process.	MEFT	EAP
The Water Resources Management Act No 11 of 2013)	Abstraction of water from a source for commercial activities requires license.  Operation of a septic tank requires compliance to pollution prevention.	Prior or during operations	MAFWLR	Proponent
Labor Act Of 2007	Adherence to fair working conditions  Addressing safety and health of workers	At recruitment  Throughout phases	Ministry of Justice and labour relations	Proponent
Soil Conservation Act 76 of 1969	Address potential causes of soil erosion	Throughout phases	MAFWLR	Proponent
Communal Land Reform Act 5 of 2002	Ensure security of land title	Planning phase	MAFWLR TA	Proponent

Public and Environmental Health Act (No.1 of 2015)	Ensure health and safety of public	Throughout phases	Ministry of Health	Proponent
Nature Conservation Ordinance (No. 4 Of 1975) and It Amendment Act of 1996	Adherence to the required conduct in designated conservation area.  Relations with communal conservation body	Throughout phase	MEFT	Proponent
Hazardous Substances Ordinance No. 14 of 1974	Hazardous substances management onsite	Throughout phases	Ministry of Health	Proponent
National Heritage Act No. 27 of 2004	Any chance finds of heritage objects needs to be reported to the National Heritage Council of Namibia	Construction Phase	National Heritage Council of Namibia	Proponent
Atmospheric Pollution Prevention Ordinance, 1976	Minimise the release of polluting or noxious gases.	Throughout phases	Ministry of Health	Proponent

## 8. Training and Awareness

The effective implementation of this Environmental Management Plan (EMP) depends on a comprehensive understanding and essential training for all individuals participating in the execution of the proposed activity across its various developmental phases. Fundamental to this implementation is the commitment of the Proponent, which must be reinforced by the awareness and training of the site administrator.

It is crucial that all employees, whether directly employed by the Proponent or working on their behalf as contractors and subcontractors, are properly introduced to their roles and the expected standards of conduct. To this end, the following training and awareness plan has been developed.

Role	Type of Training Awareness	Frequency	Responsible
Proponent	EMP implementation	Upon receipt of EMP	EAP
Site Administrator	EMP Implementation	On pre-commission of operations	Proponent

Lodge Employees	Dos and Don'ts	On employment and refresher on monthly basis	Site Administrator
Contractor/ Subcontractor	EMP requirements	On Contracting	Proponent/ Site Administrator/ Contractor
Contractor, Subcontractor employees	Dos and Don'ts	Induction and refresher as necessary	
Visitors/Guests	Dos and Don'ts	Upon Lodging/Visit	Site Administrator

## 9. Incident Reporting and Resolution

To guarantee the successful execution of the Environmental Management Plan (EMP), it is mandatory for all employees to report any incidents concerning environmental, health, and safety matters. All such incidents or observations should be systematically documented, and necessary measures are implemented to address and resolve these issues effectively.

## 10. Environmental Monitoring and Audits

The auditing of the Environmental Management Plan (EMP) must be performed in accordance with the reporting requirements established by the Office of the Environmental Commissioner. The Proponent is responsible for ensuring this requirement is executed appropriately.

## 11. Conclusion

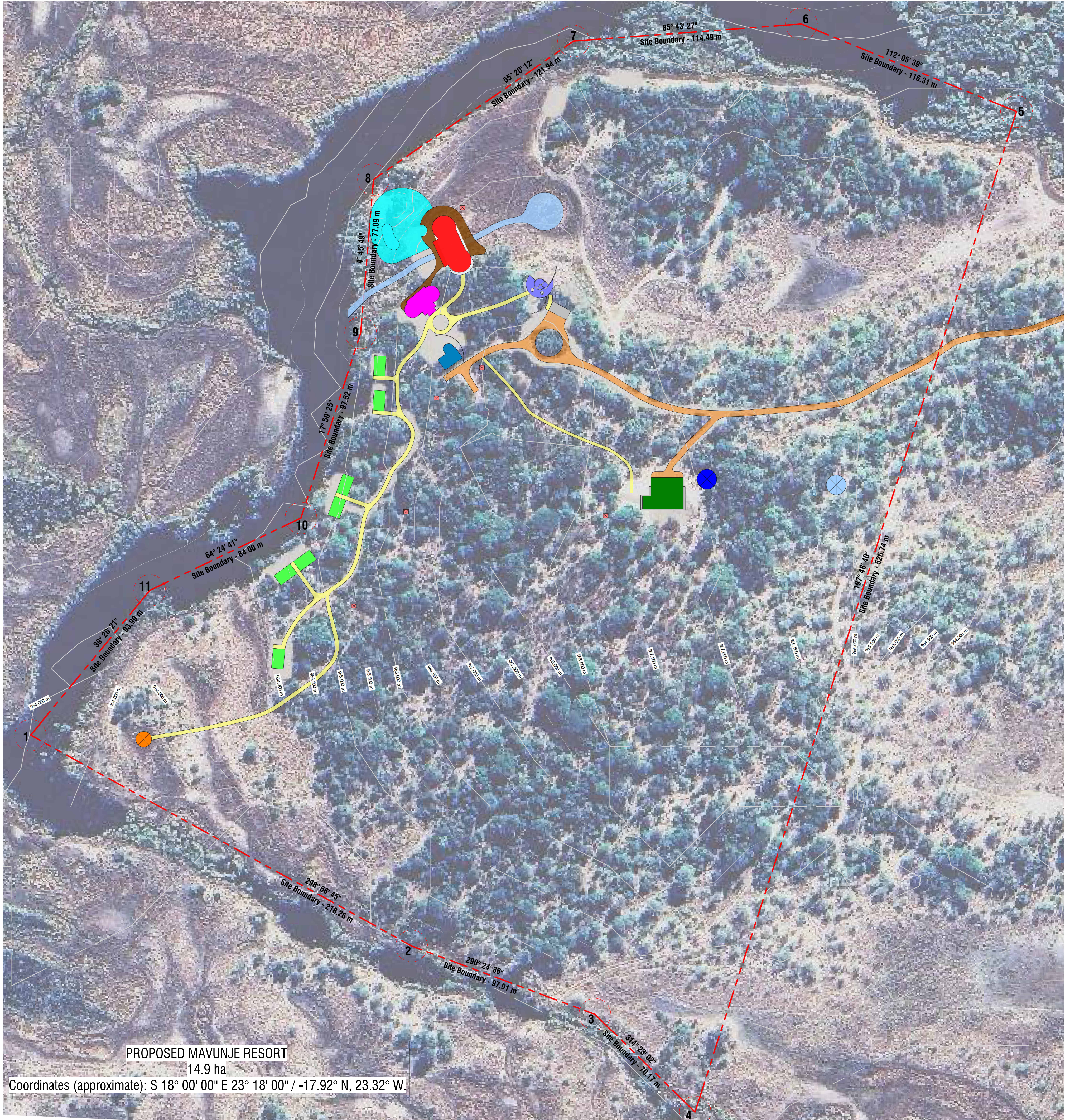
This Environmental Management Plan (EMP) is an on-site reference manual for the proposed implementation of the proposed activity at Mavunje. The Proponent, through the established structures, shall be liable for the implementation of the EMP to achieve desired operational level. Non-compliance shall be subject to legislative requirements and subsequent applicable processes by the Environmental Commissioner. Monitoring and review must take place to ensure compliance with environmental commitments.

## 12. Recommendations

The Environmental Assessment Practitioner advises the Environmental Commissioner to deem this environmental management plan adequate for granting the required environmental clearance for the proposed activity, subject to thorough compliance with the measures outlined within the plan.

## Appendix

### EMP- 1: Site Layout



PROPOSED MAVUNJE RESORT  
14.9 ha  
Coordinates (approximate): S 18° 00' 00" E 23° 18' 00" / -17.92° N, 23.32° W.

**Site Development Plan**  
Scale: 1 : 1000  
0 12500 25000 50000  
0 50

**CORNER POINTS:**

POINT	LATITUDE	LONGITUDE
1	-17.9212	23.316
2	-17.92219	23.31779
3	-17.92251	23.31865
4	-17.92297	23.31912
5	-17.91827	23.32063
6	-17.91786	23.31962
7	-17.91794	23.31855
8	-17.91859	23.31761
9	-17.91931	23.31755
10	-17.92018	23.31727
11	-17.92052	23.31656

**SCHEDULE OF AREAS**

KEY/LEGEND	AREA
ACCESS ROADWAY	±1207.19m <sup>2</sup>
PEDESTRIAN WALKWAYS	±1022.05m <sup>2</sup>
SERVICE BUILDING	262.25m <sup>2</sup>
RECEPTION BUILDING	107.12m <sup>2</sup>
COVERED PARKING	50.00m <sup>2</sup>
TIMBER DECKING	414.63m <sup>2</sup>
MAIN BUILDING	346.02m <sup>2</sup>
DINING BUILDING	189.69m <sup>2</sup>
KITCHEN BUILDING	87.40m <sup>2</sup>
POOL AREA	896.40m <sup>2</sup>
ACCOMMODATION TENTS	420.00m <sup>2</sup>
LAGOON	
BOAT AREA	
SEPTIC TANKS	
X2 10KL ELEVATED WATER TANKS	
BOREHOLE	

**COPYRIGHT NOTICE**  
Copyright © BLH Architecture (Pty) Ltd.  
Copyright subsists in this drawing. The person or entity, whose name appears in the title block of this drawing, is hereby granted a non-exclusive license to use, display, print, and/or reproduce this drawing to the extent necessary to carry out and complete the project described in the title block of this drawing.  
This license in respect of the copyright is expressly limited as aforesaid and the person and/or entity referred to above shall not be entitled to grant sub-licenses in respect of the copyright in this drawing to any other entity.  
This license confers no ownership rights in the copyright vesting in the drawing and this drawing and the copyright subsisting therein will, at all times, remain the property of BLH Architecture (Pty) Ltd. . Any unauthorized reproduction, publication, transmission, adaptation and/or inclusion of this drawing in a cinematograph film or television broadcast is an act of copyright infringement which will render the doer of the act liable for civil law copyright infringement and may in certain circumstances render the doer liable to criminal prosecution. Requests and enquiries concerning this drawing and the rights subsisting therein should be addressed to the copyright owner.  
**ACTS OF PARLIAMENT**  
All Contractors shall ensure that, before any work is put in hand, they comply with all the necessary Acts of Parliament of the Republic of South Africa.  
This drawing is the property of BLH Architecture (Pty) Ltd. and is intended for the use only on site and for the project to which it relates:  
• Copyright in this drawing is owned by BLH Architecture (Pty) Ltd.  
• All work is to be carried out in accordance with SANS 10400 and other relevant SANS Standards.  
• This drawing is not to be scaled. Figure dimensions to be used. All dimensions are in millimeters unless otherwise stated.  
• All levels and dimensions to be checked on site by the contractor before work is carried out and any discrepancies to be reported to the Architect.  
• The contractor shall in all aspects of the works comply with the provisions of the Occupational Health and Safety Act, 1993 (Act No 85 of 1993) and any regulations promulgated in terms of that Act or the Factories Machinery and Building Works Act of 1941.  
• This drawing must be read in conjunction with all the relevant drawings, schedules and specifications from the Architect and all other consultants related to the project.

REV DESCRIPTION	DRAWN DATE
ARCHITECT <b>B.Masikane</b>	
SACAP REG. NUMBER <b>PrArch 64079232</b>	
SIGNATURE: _____	DATE: 2026/01/09 13:07:46

**BLH**  
- architecture -  
Office A29, Innovation Work Office Park,  
16 Scale End Road, Halfway House,  
Midrand, 1682  
Email: info@blharch.co.za

CIPIC Reg. No: 2023/276953/07  
Sacap Ref. Practice No: PB011788111173

**CLIENT**  
Continental Brands

**PROJECT DESCRIPTION**  
Proposed Mavunje Resort - Kongola, Ngonga  
38J9 + 75X, Kongola Katima Mulilo, Mayuni, 12056,  
Namibia

**PROJECT NAME**  
Mavunje Resort

**DRAWING DESCRIPTION**  
Site Development Plan

SCALE	CHECKED BY	DRAWN BY	DATE
As indicated @ A1	BM	BM	2026/01/09 13:07:46

PROJECT NO.	ORIGINATOR	ZONE	LEVEL	TYPE	ROLE	SERIAL NO.	REVISION
PRELIM	MUNICIPAL	TENDER	CONSTRUCTION				

**2531-BLH-A0-00-DR-A- 10-0-003**

FOR INFORMATION