

**THE ENVIRONMENTAL MANAGEMENT PLANNING (EMP) AND
AUDITING FOR AN EXISTING FUEL RETAIL STATION IN
OTJOURUNDU VILLAGE IN OMAHEKE REGION
TO SUPPORT
THE APPLICATION FOR ENVIRONMENTAL CLEARANCE
CERTIFICATE (ECC)**

Version: Final Draft

APP: 07068

<p>Author(s): Ms. Aili lipinge Company: Excel Dynamic Solutions (Pty) Ltd Telephone: +264 (0) 61 259 530 Fax2email: +264 (0) 886 560 836 Email: info@edsnamibia.com</p>	<p>Proponent : Anchor Dealers CC</p>
--	---

February 2026

TABLE OF CONTENTS

LIST OF FIGURES	ii
1 INTRODUCTION	3
1.1 Project Background	3
1.2 Purpose of the Environmental Compliance (Audit) Report.....	5
1.3 Appointed Environmental Assessment Practitioner	6
2 EMP ROLES AND RESPONSIBILITIES	6
2.1 Environmental Management Plan Actions and Audit.....	6
3 ENVIRONMENTAL AUDIT	7
3.1 Project Activity Summary and Compliance Audit.....	7
3.2 Management Action Plan: Operation (and Maintenance) Phase	8
3.3 Management Action Plan: Decommissioning Phase	18
4 CONCLUSION AND RECOMMENDATIONS	25

LIST OF FIGURES

Figure 1: Location of the fuel retail facility	4
Figure 2 Some of the fuel retail facility areas.....	33
Figure 3: The general topography of the project area	37
Figure 4: The hydrological map of the project area	38
Figure 5: the soil types found within and on the surrounding of the project area.....	39
Figure 6: the general geology of the project area	40

1 INTRODUCTION

1.1 Project Background

This environmental management plan report is prepared on behalf of the Anchor Dealers CC (hereinafter referred to as *the Proponent*). Anchor Dealers CC (The Proponent) operates a fuel retail facility at farm Anchor, in Otjourundu village, in the Omaheke region since 1988. The 3 hectares facility provides essential fuel supply and related services to local residents, agricultural operations, mining explores since the services station is within the Kalahari belt and passing traffic/ traveler within this rural part of eastern Namibia. The Filling Station locality map is shown in Figures 1.

The environmental management plan report summarizes the fuel retail facility's environmental performance. The audit report is prepared as per the requirements of the Environmental Impact Assessment (EIA) Regulations No. 30 of 2012 gazetted under the Environmental Management Act (EMA), 2007, (Act No. 7 of 2007).

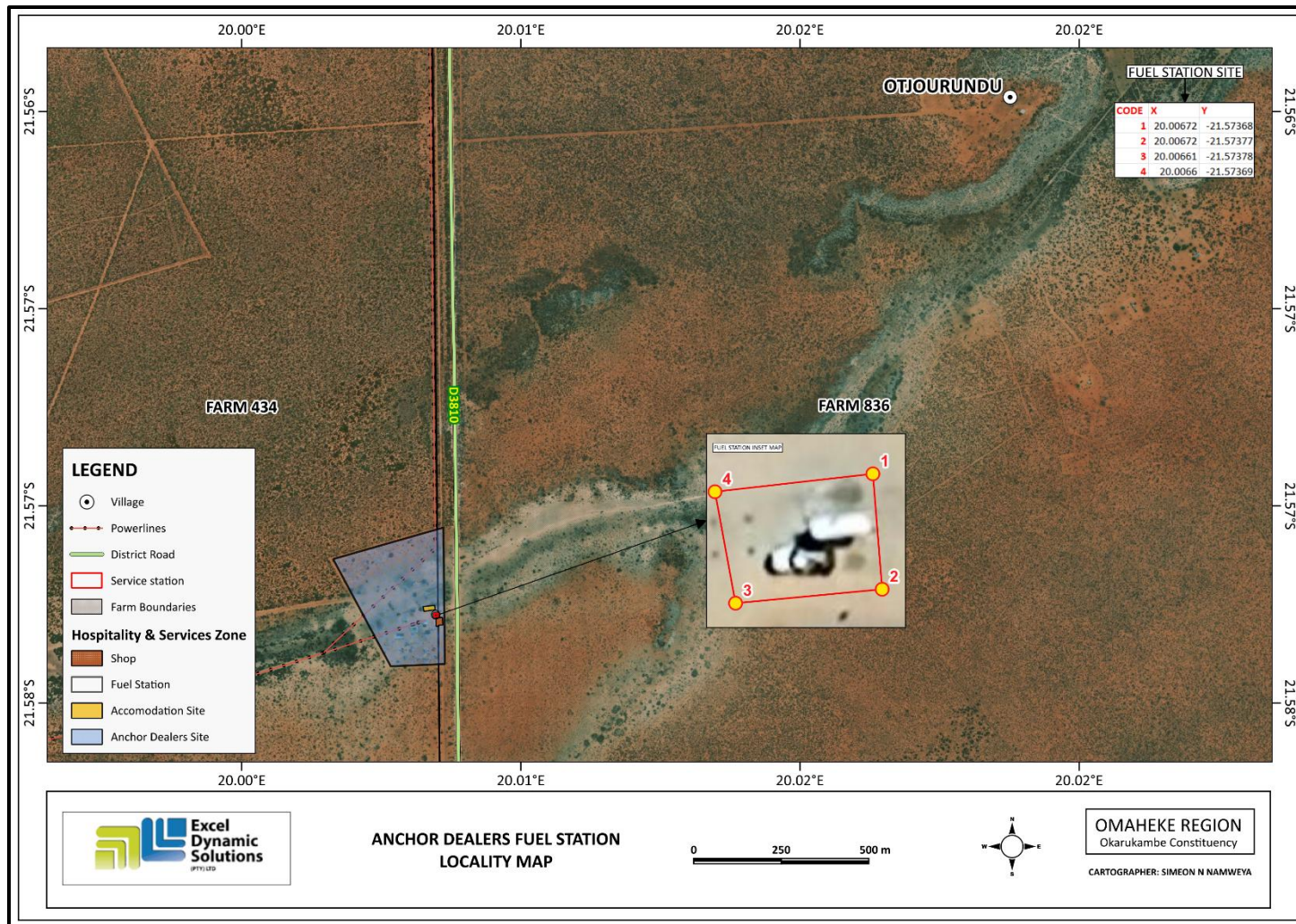


Figure 1: Location of the fuel retail facility

1.2 Purpose of the updated Environmental Management Plan Report

An Environmental Management Plan Report links the impacts identified in the EIA Process to the required environmental management measures and preparedness responses on the ground during project implementation and operation, as assessed during compliance monitoring.

The compilation of this updated Environmental Management Plan and/or Audit Report is one of the requirements (scope of work) presented to EDS by Anchor Dealers CC to ensure environmental compliance with reference to the Environmental Management Plan (EMP), which was prepared as a legal requirement by Section 8 of the Environmental Management Act (EMA), No.7 of 2007 and its 2012 Environmental Impact Assessment (EIA) Regulations.

The Report documents the progress made in environmental compliance for the fuel storage facility's operations. The phases of the project are summarised below:

- **Operation and maintenance** - This is the phase during operation where the Proponent carries out fueling and undertakes related activities on site. It is also the phase during which maintenance of the area, equipment and machinery is expected to be done by the Proponent.
- **Environmental Monitoring Requirements** - In order to support and ensure that the proposed mitigation measures are achieving the desired results, a monitoring plan must be implemented alongside the mitigation plan.
- **Decommissioning and Rehabilitation** – This is the phase during which operations at the fuel retail facility cease. The decommissioning of operations may be considered once the need for the fuel retail facility diminishes. During the operational phase and before decommissioning, the Proponent will need to implement site rehabilitation measures.

It is expected of Anchor Dealers CC and its employees and/or contractors that they guide operations on site to ensure that impacts on the environment are avoided or, if unavoidable, limited.

1.3 Appointed Environmental Assessment Practitioner

Excel Dynamic Solutions (Pty) Ltd has been appointed as the external Environmental Control Officer (ECO) to ensure EMP compliance with the conditions of authorisation for operations at the Fuel Retail Facility, to perform environmental monitoring and auditing, and to produce an updated EMP and environmental compliance report for the proponent. The audit period it has been in existence. Ms. Aili lipinge compiled this document.

2 EMP ROLES AND RESPONSIBILITIES

As the ECC holder, the Proponent is ultimately responsible for implementing the updated EMP and has delegated responsibility for its effective implementation to Excel Dynamic Solutions (Pty) Ltd for the time period covered by this audit.

2.1 Environmental Management Plan Actions and Audit

The EMP's management actions aim to avoid potential negative impacts wherever possible. Where impacts cannot be avoided, measures are provided to reduce their significance. It is therefore important for the Proponent / Environmental Manager to ensure adherence to the management actions.

Management actions recommended for the potential impacts rated in the EIA carried out for the prospecting and exploration activities were based on the three project phases listed below:

- Phase 1: Operational (**Table 1**)
- Phase 2: Decommissioning and Rehabilitation (**Table 2**)

The responsible persons at Anchor Dealers CC should assess these commitments in detail and should acknowledge their commitment to the specific management actions detailed in the EMP. The compliance, thereof, is measured in **Tables 1** and **2**.

3 ENVIRONMENTAL AUDIT

3.1 Project Activity Summary and Compliance Audit

The Fuel Retail Facility has been in existed since 1988 before the enforcement of the EMA No.7 of 2007. Therefore, this audit assessment and EMP update cover the entire operational period, as no audits were conducted during the facility's existence.

EDS has performed an Environmental Site Audit, in conformance with the Scope of Work developed in cooperation with the client and the provisions of EMA 7 of 2007. This assessment has found no evidence of Recognised Environmental Conditions (RECs) associated with the facility. Site observation details are presented in **Appendix A**.

3.2. Management Action Plan: Operation (and Maintenance) Phase

The management actions recommended for this phase are presented in **Table 1** below.

Table 1: Audit on Management Action Plan for the Operation and Maintenance Phase

Environmental Feature	Management Actions	Observations	Compliance comment	Corrective Action/Recommendation
EMP availability	Employees appointed for operation and maintenance on the respective site must ensure that all personnel have access to a copy of the EMP.	Personnel on the site have been informed of all the OHS&E but most issues in the EMP as the fuel station does not have an EMP in place yet.	NON-COMPLIANT	Environmental Coordinator/Proponent must ensure that a copy of the EMP is compiled and made available at the Property.
EMP training	Employees appointed to operation and maintenance on the respective site must ensure that all personnel are aware of the health, safety, and environmental considerations applicable to their work.	Personnel on the site have NOT been informed of all the OHS&E issues	NON-COMPLIANT	Environmental Coordinator/Proponent to ensure Property employees and contractors are afforded training opportunities on the updated EMP.
Employment and skills transfer	Provision of employment to residents of Otjourundu village and nearby residence.	Employment of residents is prioritised .	COMPLIANT	N/A

Environmental Feature	Management Actions	Observations	Compliance comment	Corrective Action/Recommendation
Visual Impacts (sense of place)	All the necessary options to improve the aesthetic of the site should be considered and incorporated into the activities of the operation of the facility.	The site is kept tidy and shows consideration of the natural aesthetic of the site, and conforms to the standard set up of the neighborhood.	COMPLIANT	N/A
Ecological Impact	All the necessary options to preserve the natural ecological settings	Due to the nature of the operation, their environment is not in the natural state., the plant on site have been cleared for the construction purpose, but there are visible flora along the site.	COMPLIANT	N/A
Air Quality	All venting systems and procedures have to be designed according to SANS standards	Vapour emissions are minimal and site specific and pose a limited threat to personnel on site.	COMPLIANT	N/A

Environmental Feature	Management Actions	Observations	Compliance comment	Corrective Action/Recommendation
<p>hydrocarbon vapours are released during delivery due to incomplete containment of fuel and venting of tanker's compartments. Vapours can also be released during the filling of road tankers.</p>				
<p>Waste Generation</p>	<p>Contaminated fuel products that can no longer be used in the market must be disposed of in the hazardous waste section of a municipal dump, or, where possible, transferred to waste oil recycling facilities.</p>	<p>Hazardous waste is collected and removed from the site regularly .</p>	<p>COMPLIANT</p>	<p>N/A</p>
	<p>All other domestic waste should be disposed of in a clearly marked bins timeously to maintain visual orderliness</p>	<p>Waste are being kept in a bin ,but they are not clearly marked</p>	<p>PARTIALLY - COMPLIANT</p>	<p>The proponent must clearly mark the waste bin</p>

Environmental Feature	Management Actions	Observations	Compliance comment	Corrective Action/Recommendation
	Contaminated soil (oil spill) can be remediated in accordance with accepted procedures at a site dedicated to this purpose.	There is an evidence of oil spill , and no oil spill removal procedures on site	NON- COMPLIANT	The proponent must implement the oil spill removal procedure on site. Workers must be trained on those procedures.
	A register of hazardous waste disposal should be kept. This should include the type of waste, volume, as well as the disposal method/facility.	There is no register on site	NON -COMPLIANT	The proponent must have a hazardous waste register on site registering all waste being disposed
	Any complaints received regarding waste should be recorded with notes on action taken	There is no register on site	NON- COMPLIANT	The proponent must have a hazardous waste register on site registering all waste generated and the action taken
Health and Safety	<p>Implementation of a health and safety management system will reduce health and safety related risks.</p> <p>Typical mitigating measures within the health and safety management systems are: -</p> <ul style="list-style-type: none"> • Job hazard analysis • Operational and procedural manuals • NEBOSH (or equivalent) certified Health 	<p>Implemented.</p> <p>A bi-annual report of all incidents reported is compiled, including inspection and maintenance dates of equipment and structures .</p>	COMPLIANT	N/A

Environmental Feature	Management Actions	Observations	Compliance comment	Corrective Action/Recommendation
	<p>and Safetytraining of staff</p> <ul style="list-style-type: none"> • Regular inspections and maintenance of all safety equipment and structures • Implement housekeeping rules • Colour coding areas, pipes, equipment and substances • Signage for Personal Protective Equipment (PPE) (e.g. protective clothing like safety boots and hard hats) • Safe work procedures and permits to work • Clearance certificates for confined spaces • Emergency response plans • Regular reviews of Material Safety Data Sheets(MSDS) in training • First aid training of supervisors and volunteering staff and treatment • Medical procedures and emergency services must be available on site or close by • Daily safety moments and/or drills • Protective equipment e.g. handrails on top of rail or road tankers • Implement regulations for handling fuel 	<p>Health and Safety Training is conducted twice a year.</p>		

Environmental Feature	Management Actions	Observations	Compliance comment	Corrective Action/Recommendation
Noise	<p>The World Health Organisation (WHO) Guidelines for Community Noise Levels (1999) must be followed to prevent hearing impairment. Noise levels in industrial areas are limited to an average of 70 dB over a 24-hour period, with maximum noise levels not exceeding 110 dB during the period.</p> <p>All noise complaints and additional data must be included in the health and safety report.</p>	A bi-annual report of all incidents reported is compiled, including inspection and maintenance dates of equipment and structures.	COMPLIANT	N/A
Groundwater Contamination	Spill control structures and procedures must be in place in accordance with SANS 089-1 and SANS 089-3, or better, including impounding around loading areas by bunding with appropriate slopes of 1:100.		COMPLIANT	N/A
	All fuelling should be carried out on surfaces provided for this purpose—E.g. Concrete slabs with regularly maintained seals between slabs.		COMPLIANT	N/A
	The procedures followed to prevent environmental damage during service and maintenance, and compliance with these procedures, including the correct use of sumps and regular reporting of spillages, must	There is no oil spillage removal procedure on site	PARTIALLY - COMPLIANT	The introduction and implementation of oil spillage removal onsite.

Environmental Feature	Management Actions	Observations	Compliance comment	Corrective Action/Recommendation
	<p>be audited and corrections made where necessary.</p>			
	<p>Proper training of operators must be conducted on a regular basis.</p>		<p>COMPLIANT</p>	<p>N/A</p>
	<p>Any spillage of more than 200 litre must be reported as per the Petroleum Products License.</p> <p>Spill clean-up kit must be available on site as per the relevant Material Safety Data Sheets</p>	<p>There is no oil spill cleaning kit on site</p>	<p>NON -COMPLIANT</p>	<p>The proponent must have an oil spill cleaning kit on site and train the workers on how to safely clean up the oil spill</p>
	<p>Contingencies for the changes in pressure and temperature between Otjourundu village and the destination must be in place when filling tankers in Otjourundu village.</p> <p>Avoid overfilling of tanks in Otjourundu village</p> <p>Position tankers over bunded areas to prevent soil contamination, especially during rainy season to prevent runoff to nearby drainage systems or infiltration towards the water table.</p>		<p>COMPLIANT</p>	<p>N/A</p>

Environmental Feature	Management Actions	Observations	Compliance comment	Corrective Action/Recommendation
Fire and Explosion Hazard	<p><i>Safe Offloading/Loading Procedures must be followed:</i></p> <ul style="list-style-type: none"> Coupling of hoses should be tight and old perished materials should be replaced before leaks occur. 		COMPLIANT	N/A
	<p><i>Safe Handling Procedures must be followed:</i></p> <ul style="list-style-type: none"> Use non-sparking tools and explosion-proof equipment. Use in well-ventilated area away from all ignition sources. Keep product away from high-energy ignition sources, heat, sparks, pilot lights, static electricity, and open flames. 		COMPLIANT	N/A
	<p>All liquid hydrocarbon storage containers should be grounded and bonded.</p> <p>Products must be stored where they are not affected by heat.</p>		COMPLIANT	N/A
	<p><i>Storage and Handling Procedures must be followed:</i></p>		COMPLIANT	N/A

Environmental Feature	Management Actions	Observations	Compliance comment	Corrective Action/Recommendation
	<ul style="list-style-type: none"> Electrical equipment and fittings must comply with local fire prevention regulations for this class of product. Refer to national or local regulations covering safety at petroleum handling and storage areas for this product Emergency training and an emergency drill program must be implemented to be given at least every 6 months on Emergency Procedures. 			
	<p>Fire Fighting and Fire Prevention:</p> <ul style="list-style-type: none"> All fire precautions and fire control at the site must be in accordance with SANS 089-1, or better. Firefighting measures, as per the Material Safety Data Sheets of the product, should be adhered to. All personnel must be sensitised about responsible fire protection measures and good housekeeping such as the removal of flammable materials (e.g. rubbish, dry vegetation, and hydrocarbon-soaked soil) from the vicinity of the installation. Regular inspections should be carried out to check for these materials at the site. All fuel storage and handling facilities in Namibia must comply with strict safety distances as prescribed by SANS. 		COMPLIANT	N/A

Environmental Feature	Management Actions	Observations	Compliance comment	Corrective Action/Recommendation
	<ul style="list-style-type: none"> • There must be sufficient water available for firefighting purposes, as according to the SANS 089-1 specifications • A holistic fire protection and prevention plan, including an emergency response plan, a firefighting plan and a spill recovery plan is needed. • Regular surveys of the fire-fighting equipment and water supply should be conducted. • The operations must have an integrated fire prevention plan, which considers the regulations stipulated in sections 47 and 48 of the Petroleum Products and Energy Act, 1990 (Act No. 13 of 1990). 			
Traffic	Uploading of fuel should remain within the working hours as agreed upon in writing for operations of the facility, in order to limit traffic congestion.		COMPLIANT	N/A
	An efficient fuel uploading schedule must be implemented.		COMPLIANT	N/A
Security	<p>Fitness for work certificates for all security officers must be issued monthly.</p> <p>Daily alcohol testing should be conducted by an authorised person at the start and end of each shift.</p>		COMPLIANT	N/A

3.3 Management Action Plan: Decommissioning Phase

Table 4: Management action plans for the Decommissioning Phase

Environmental Feature	Management Actions/Monitoring Objectives	Observation	Compliance	Recommended Action
Waste production	<p>All re-usable pipelines, pumps, tanks, valves and other equipment must be removed to another site or sold.</p> <p>manner. Those that can be reused must be scrapped properly. Any items that cannot be reused must be scrapped appropriately.</p> <p>Upon demolition of buildings and concrete, the rubble must be removed from the property and taken to an approved dumpsite designated by the Gobabis Municipality.</p>	The project has not reached this stage	COMPLIANT	N/A

Environmental Feature	Management Actions/Monitoring Objectives	Observation	Compliance	Recommended Action
	Rehabilitation, if necessary, is to be done using funds designated for the purpose.			
Ecological Impact	Dismantling and removal of any structure should not affect any faunal or floral habitats formed during operation, or any organism that has become dependent on those structures for survival, shelter or breeding.	The project has not reached this stage.	COMPLIANT	N/A
	The , and the feasibility of relocating fauna or flora must be addressed. Should the species be listed as vulnerable to extinction, the MEFT must be contacted in order to determine the appropriate handling of the situation and determine the proper course of action.		COMPLIANT	N/A
Employment	Have a plan in advance for meeting the Labour Act's requirements, in the case where the Proponent is considering the retrenchment of staff.	The project has not reached this stage	COMPLIANT	N/A

Environmental Feature	Management Actions/Monitoring Objectives	Observation	Compliance	Recommended Action
	Where possible, staff can be relocated to another facility or town where business can continue as usual.			
Dust generation	Regular dust suppression should be included in the Decommissioning Plan for cases of excessive dust. Personnel should be issued dust masks for health and safety. The Accumulated rubble that may cause dust must be taken to the dumpsite within a reasonable timeframe.	The project has not reached this stage.	COMPLIANT	N/A
Noise	The World Health Organization (WHO) guideline on maximum noise levels (Guidelines for Community Noise, 1999) to prevent hearing impairment can be followed during the decommissioning phase.	The project has not reached this stage	COMPLIANT	N/A
Visual Impact	Visual impacts could be limited by keeping	The project has not reached this stage	COMPLIANT	N/A

Environmental Feature	Management Actions/Monitoring Objectives	Observation	Compliance	Recommended Action
	All decommissioned areas are clean and orderly at all times. Good housekeeping also reduces the risk of injuries			
	Notice of the commencement of decommissioning should be given to the local authorities, with an invitation to provide feedback at any time on the visual impact.	The project has not reached this stage	COMPLIANT	N/A
	Avoid combining hazardous and non-hazardous waste by providing separate waste containers (bins) for hazardous and domestic/general waste.	The project has not reached this stage	COMPLIANT	N/A
Surface and groundwater contamination	Pollutants in soil and building rubble must be transported away from the site to an approved, appropriately classified waste disposal site. Confirm MSDS information of any remaining fuels, oils or lubricants that must be discarded.	The project has not reached this stage	COMPLIANT	N/A

Environmental Feature	Management Actions/Monitoring Objectives	Observation	Compliance	Recommended Action
	<p>Regulations on sewerage discharge and on the chemicals that may or may not be discharged into the sewerage system must be followed.</p>			
<p>Health, Safety and Security</p>	<p>Adequate health and safety measures must be included in the decommissioning plan to ensure the safety of staff on site, and include:</p> <ul style="list-style-type: none"> • Proper training of operators; • First aid treatment; • Medical assistance; • Emergency treatment; • Prevention of inhalation of fumes (fuel); • Protective clothing, footwear, gloves and belts; safety goggles and masks; • Manuals and training regarding the correct handling of materials should be in place and updated as new or updated material safety data sheets become available; Risks might be lower, but still exist, especially if tanks must 	<p>The project has not reached this stage</p>	<p>COMPLIANT</p>	<p>N/A</p>

Environmental Feature	Management Actions/Monitoring Objectives	Observation	Compliance	Recommended Action
	<p>be entered for inspections. Confined space training will be required.</p> <ul style="list-style-type: none"> • 24-hour security surveillance in case of opportunistic activities. 			
<p>Fire and Explosion Hazard</p>	<p>All relevant regulations and precautions should be in place, as they were during the Operational Phase.</p> <p>All personnel have to be sensitised about responsible fire protection measures and good housekeeping.</p> <p>Regular inspections and tests should continue to be conducted of firefighting equipment and pollution-control materials at the fuel storage facility.</p>	<p>The project has not reached this stage</p>	<p>COMPLIANT</p>	

Environmental Feature	Management Actions/Monitoring Objectives	Observation	Compliance	Recommended Action
	<p>All fire precautions and fire control at the fuelstorage facility must comply with SANS or better.</p> <p>The holistic fire protection and prevention plan should still be utilised.</p>			

SUMMARY OF COMPLIANCE

This environmental audit has identified 24 management actions. After on site observation, six (6) out of the 24 management actions have been identified as ***Non-Compliant and 2 (two) out of 24 management action are partially compliant*** .. Fourteen (14) of the management actions were observed as ***Compliant***. All 14 monitoring actions were identified as ***Compliant***. The large proportion of ***Compliant*** actions recorded for the environmental site audit therefore indicates that the Proponent is generally Compliant with the project's management and monitoring action plans.

The 6 non-compliances and partially compliance may be treated as a single issue, requiring a single solution/intervention. The identified issue has, to date, had no significant negative effects on fuel retail facility operations, employees, or the environment but a major concern in future there is a need oof the proponent intervesion . The issue of Partial and non-Compliance identified is:

1. ***Absence of the EMP copy on site and training of employees on its content, which needs to be done by a qualified environmental professional.***
2. ***Absence of oil spillage removal procedure and kit on site***
3. ***Absence of marked dust bins on site***

Such Although considered minor at this stage, training of employees and readily access to a copy of the EMP will be relevant in the cases of observed irresponsible and/or unsustainable activity in the environment.

4 CONCLUSION AND RECOMMENDATIONS

The minor non-compliances identified in this environmental site audit report require corrective action to ensure the operations of Anchor Dealers CC fuel retail facility achieve a 100% Compliance rate. The assessment has found no evidence of HRECs associated with the facility. Recommendations for corrective action are as follows:

- Provide a copy of the updated EMP and follow up with training of all involved employees and stakeholders on the EMP content
- Implement a penalty system for EMP Compliance to enforce accountability towards environmental management within the fuel retail facility operations.
- The proponent must clearly mark the waste bin onsite

- The proponent must implement the oil spill removal procedure on site. Workers must be trained on those procedures.

The potential positive and negative impacts of the fuel storage activities were identified, assessed, and mitigation measures were implemented. Mitigation measures need to be adhered to at all times. Most importantly, monitoring of the environmental components described in the Environmental Management Plan should be conducted by the Proponent and an appointed Environmental Officer or any applicable Competent Authority.

The next site inspection will be undertaken once the Environmental Clearance Certificate is granted and a resultant biannual report will be produced thereafter accordingly .

APPENDIX A ENVIRONMENTAL SITE VISIT AUDIT AND INTERVIEW REPORT



Author(s): **Ms. Aili lipinge**
Company: **Excel Dynamic Solutions (Pty) Ltd**
Telephone: **+264 (0) 61 259 530**
Fax2email: **+264 (0) 886 560 836**
Email: **info@edsnamibia.com**

Client: **Anchor Dealers CC**

February 2026

1 EXECUTIVE SUMMARY

Excel Dynamic Solutions Pty Ltd (EDS) has performed a Phase I Environmental Site Audit (“ESA”) of the Filling station at farm Anchor, in Otjourundu village was authorised to perform this work in January 2026 by Anchor Dealers CC. The ESA was conducted in accordance with the scope and limitations of the Environmental Management Act No. 7 of 2007 and the EIA Regulations of 2012, the Petroleum Products and Energy Act of 1990 and its regulations, and the South African National Standard (SANS) 10089. An independent, qualified environmental professional has prepared this ESA.

The fuel filling facility comprises buildings that include a reception area, kitchen, toilets, and offices. The remainder of the facility area contains underground storage tanks, fire extinguishers, fire hydrants for emergency control, product pipelines, and a control room for monitoring and controlling product movement. The offloading areas have drainage pits connected to the separator pit for wastewater collection. The stored fuel consists of 50 ppm diesel and unleaded petrol (ULP).



Northern Fuel Distributors CC
Reg No: 123456789
P.O. Box 123, Johannesburg, South Africa
Tel: 011 123 4567, Fax: 011 987 6543

PERSONAL PROTECTIVE EQUIPMENT POLICY

Petrol supports and enforces the wearing of PPE. All employees of *Petrol* are issued with PPE and it is mandatory to wear it whilst working.

Wear your issued PPE and keep it clean and in good condition. PPE should be worn only at work and kept separate from other belongings.

Northern Fuel Distributors CC
Reg No: 123456789
P.O. Box 123, Johannesburg, South Africa
Tel: 011 123 4567, Fax: 011 987 6543

HEALTH, SAFETY AND ENVIRONMENT POLICY

Petrol is committed to protect the environment and to ensure the health and safety of its employees and the general public. It is committed to comply with all applicable laws and regulations, to which we are bound, and to ensure that our operations are conducted in a manner that is consistent with the highest standards of the oil industry, which *Petrol* is committed to uphold.

Although our HSE policy is an integral part of our business strategy, we are committed to ensuring that our operations are conducted in a manner that is consistent with the highest standards of the oil industry, which *Petrol* is committed to uphold.

The purpose of the HSE policy is to ensure a safe and healthy workplace and to ensure that our operations are conducted in a manner that is consistent with the highest standards of the oil industry, which *Petrol* is committed to uphold.

The business plans to ensure that our operations are conducted in a manner that is consistent with the highest standards of the oil industry, which *Petrol* is committed to uphold.

The company wants to ensure that our operations are conducted in a manner that is consistent with the highest standards of the oil industry, which *Petrol* is committed to uphold.





Petroleum spirit highly flammable



No Smoking



No ignition sources



Switch off engine



Switch off mobile phones



No sitting or straddling while refueling

Approved containers only.
Place on the ground when filling





Figure 2 Some of the fuel retail facility areas

EDS has performed an Environmental Site Audit, in conformance with the Scope of Work developed in cooperation with the client and the provisions of EMA 7 of 2007. This assessment has revealed no evidence of Recognized Environmental Conditions (RECs) in connection with the fuel retail facility.

A de minimis condition is a condition that generally does not present a threat to human health or the environment, and that typically would not be the subject of an enforcement action if brought to the attention of appropriate governmental competent bodies. This assessment has revealed no evidence of de minimis conditions.

A historical recognized environmental condition (HREC) refers to an environmental condition which would have been considered a REC in the past, but which is no longer considered a REC based on subsequent assessment and/or remediation of any contaminants to below the most restrictive (generally residential) cleanup target concentrations or regulatory closure with no formal or implied restricted uses. The assessment has revealed no evidence of HRECs in connection with the fuel retail facility

1.2 Recommendations and Conclusions

Based on the information provided in this report, EDS recommends that no further action be required at the fuel retail facility and that the MEFT grant the Environmental Clearance Certificate (ECC).

2. INTRODUCTION

2.1 Purpose of the Assessment

Excel Dynamic Solutions Pty Ltd (EDS) has performed a Phase I Environmental Site Audit (“ESA”) of the fuel filling station at farm Anchor, in Otjourundu village in Omaheke region .EDS was authorized to do so by the proponent , in January 2026 .

This ESA has been performed by an independent environmental professional, as required under the Environmental Management Act, No. 7 of 2007. Any exceptions to, or deletions from, this practice are described in Section 1.0 of this report. The location of the Subject fuel retail facility and surrounding properties is shown in Figure 1.

The purpose of the ESA is to identify Recognised Environmental Conditions (RECs), Controlled Recognised Environmental Conditions (CRECs), Historical Recognised Environmental Conditions (HRECs), and de minimis conditions associated with petroleum product facilities, as stipulated in the EMA of 2007.

The term REC is defined as “the presence or likely presence of any hazardous substances or petroleum products in, on, or at the fuel retail facility: (1) due to release to the environment; (2) under conditions indicative of a release to the environment; or (3) under conditions that pose a material threat of a future release to the environment.”

The term CREC is defined as “a recognized environmental condition resulting from a past release of hazardous substances or petroleum products that has been addressed to the satisfaction of the applicable regulatory authority (for example, as evidenced by the issuance of a no further action letter or equivalent, or meeting risk-based criteria established by regulatory authority), with hazardous substances or petroleum products allowed to remain in place subject to the implementation of required controls.”

The term HREC is defined as “a past release of any hazardous substances or petroleum products that has occurred in connection with the fuel retail facility and has been addressed to the satisfaction of the applicable regulatory authority or meeting unrestricted use criteria established by a regulatory authority, without subjecting the fuel retail facility to any required controls.”

The term de minimis condition is defined as “a condition that generally does not present a threat to human health or the environment and that generally would not be the subject of an enforcement action if brought to the attention of appropriate governmental agencies. Conditions determined to be de minimis are not RECs nor CRECs.”

The term Business Environmental Risk (BER) refers to environmental risk considerations that do not meet the threshold for a REC but that EDS believes should be brought to the Proponent's attention and addressed during this assessment.

Typically, a Phase I ESA does not include sampling or testing of air, soil, groundwater, surface water, or building materials. These activities would be carried out in a Phase II ESA, if required.

2.2 Special Terms and Reliance

It is EDS's understanding that this report is to be used and distributed exclusively for purposes of obtaining the ECC. This report of findings was prepared for the exclusive use of Northern Fuel Distributors cc, its contractors, and competent government bodies, such as the Ministry of Environment, Forestry and Tourism (MEFT) and the Ministry of Mines and Energy (MME). The contents of this report

may not be copied, provided or otherwise communicated to any party other than those associated with Northern Fuel Distributors cc and without the express written consent of Northern Fuel Distributors cc.

2.3 Significant Assumptions

The following assumptions are made by EDS in this report. EDS relied on information derived from secondary sources, including the project coordinator, governmental agencies, the Client (Coordinator), designated representatives of the Client and personal interviews. Except as set forth in this report, EDS has made no independent investigation into the accuracy and completeness of the information derived from secondary sources, including government agencies, the Client, designated representatives of the Client, and fuel retail facility personal interviews, and has assumed that such information is accurate and complete. EDS assumes information provided by or obtained from the client is accurate and complete. EDS assumes that the Client Coordinator and Client representatives, including the Site Manager, used good faith in answering questions and obtaining information regarding the subject fuel retail facility. This would also include obtaining the relevant documents from previous consultants. EDS also assumes the Client will designate appropriate and knowledgeable people for performance of the Phase II Environmental Assessment including the Site Managers if required in the future.

3. SITE LOCATION

3.1 Subject fuel retail facility

The Filling station at farm Anchor, in Otjourundu village, in the Omaheke region .

4. PHYSICAL SETTING

4.1 General Topographic Setting

The site is within the Kalahari sandveld, with an elevation of the project area between 1305 -1519 meters above sea level, and the surface is relatively flat.

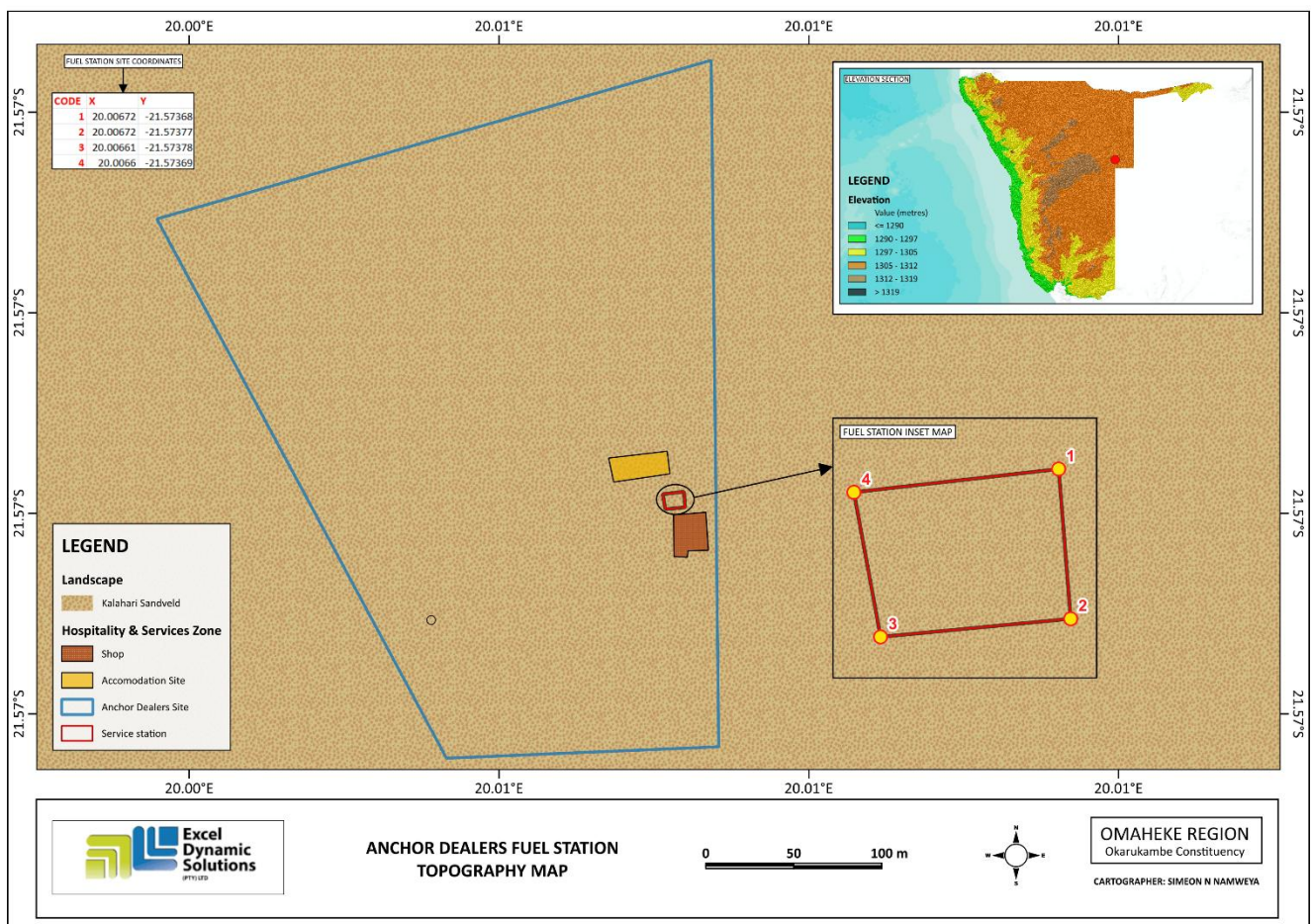


Figure 3: The general topography of the project area

4.2 Surface Water and Groundwater

The site falls within rock bodies of the Kalahari Sandveld that generally exhibit low to limited groundwater potential. Consequently, groundwater resources in the area are considered moderately vulnerable due to the characteristics of the underlying geological formations.

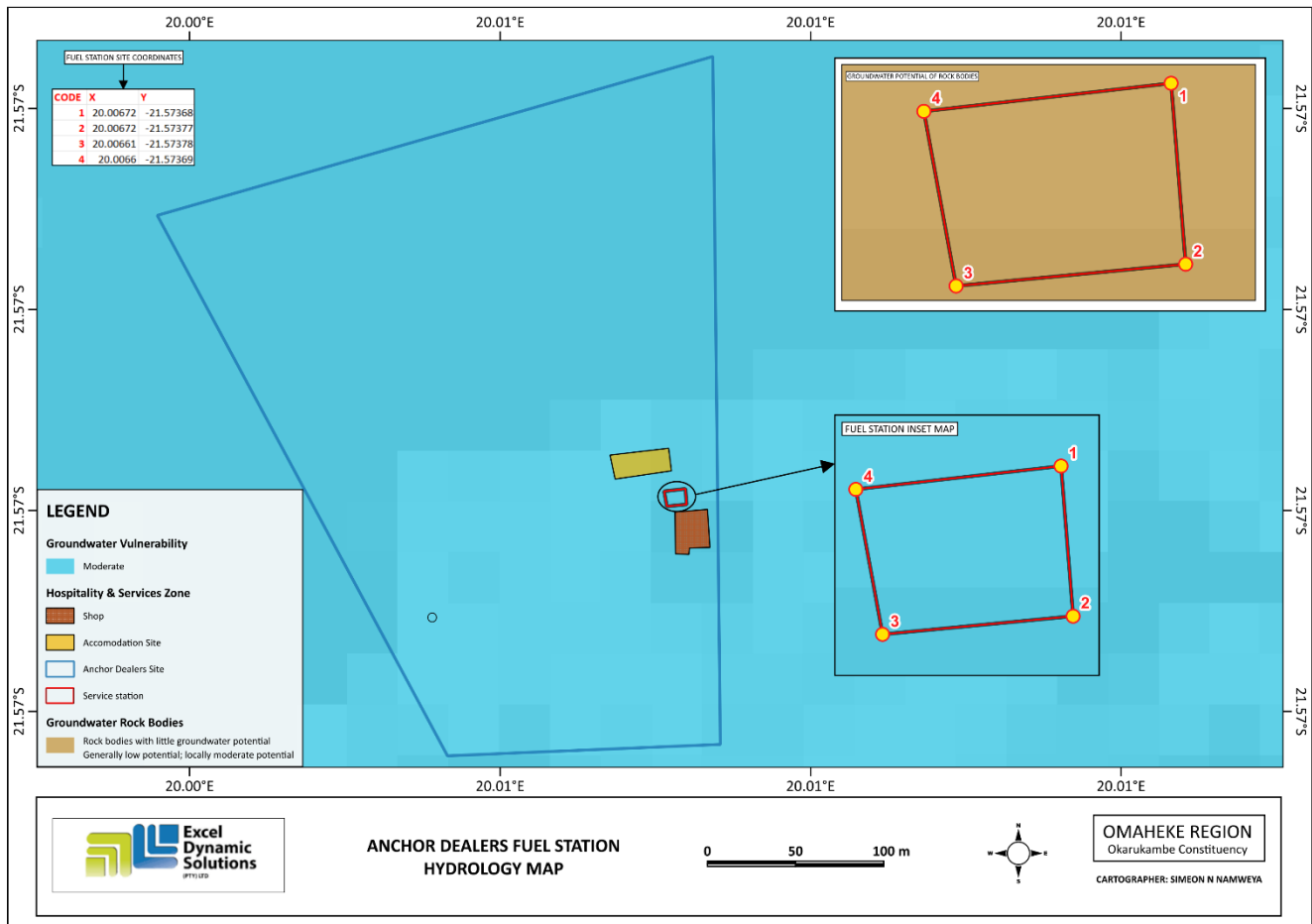


Figure 4: The hydrological map of the project area

4.3 Soils

The soils occurring within the Kalahari Sandveld are mainly **Ferralsols**, characterized by deep, loose, sandy textures, good drainage, and generally low nutrient-holding capacity. These soils typically have low organic matter content and limited water-holding capacity..

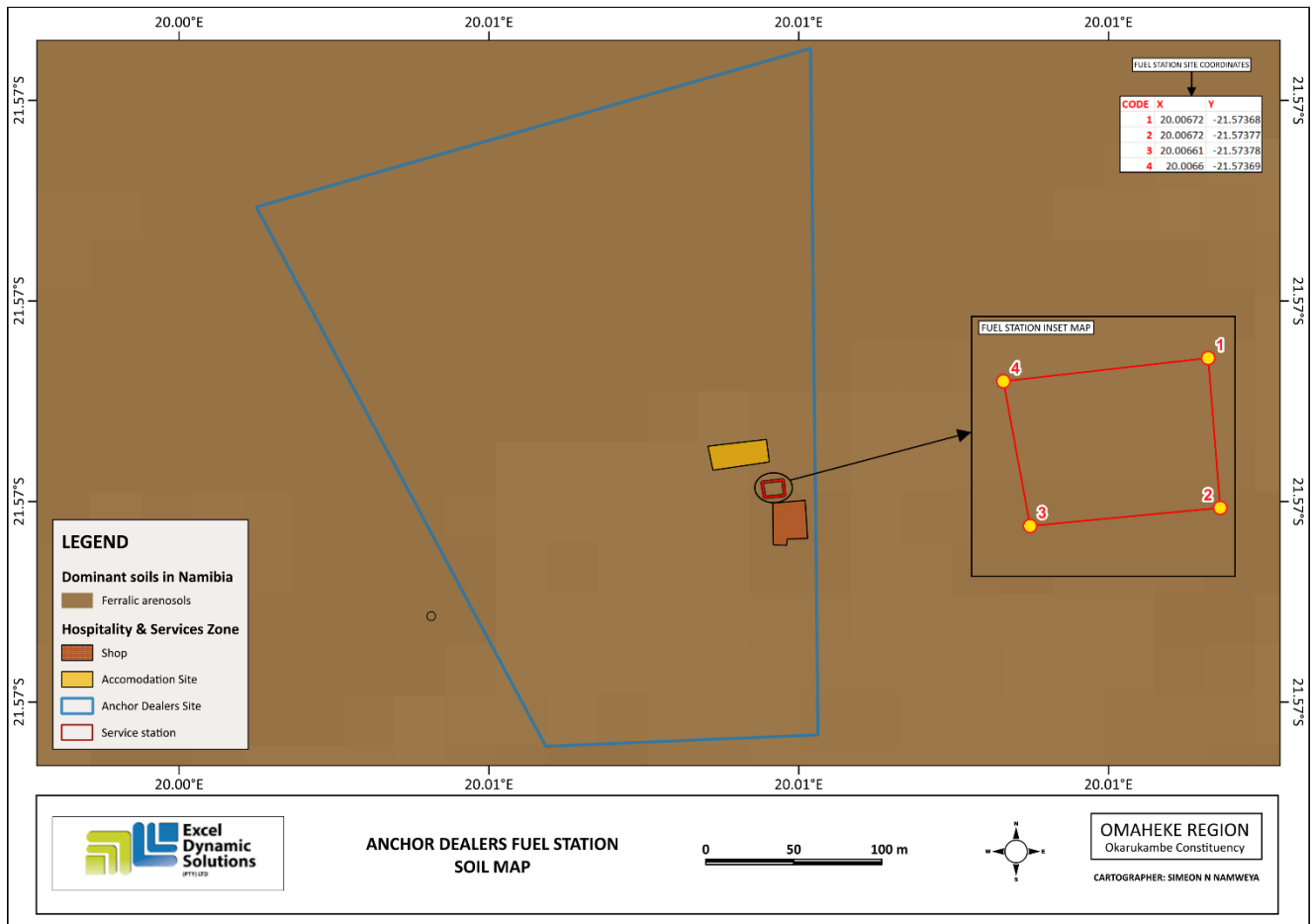


Figure 5: the soil types found within and on the surrounding of the project area

4.4 Geology

The geology of the site within the Kalahari Sandveld consists primarily of quartz-rich materials, marble, and schist, which form part of the underlying bedrock formations beneath the Kalahari sand cover.

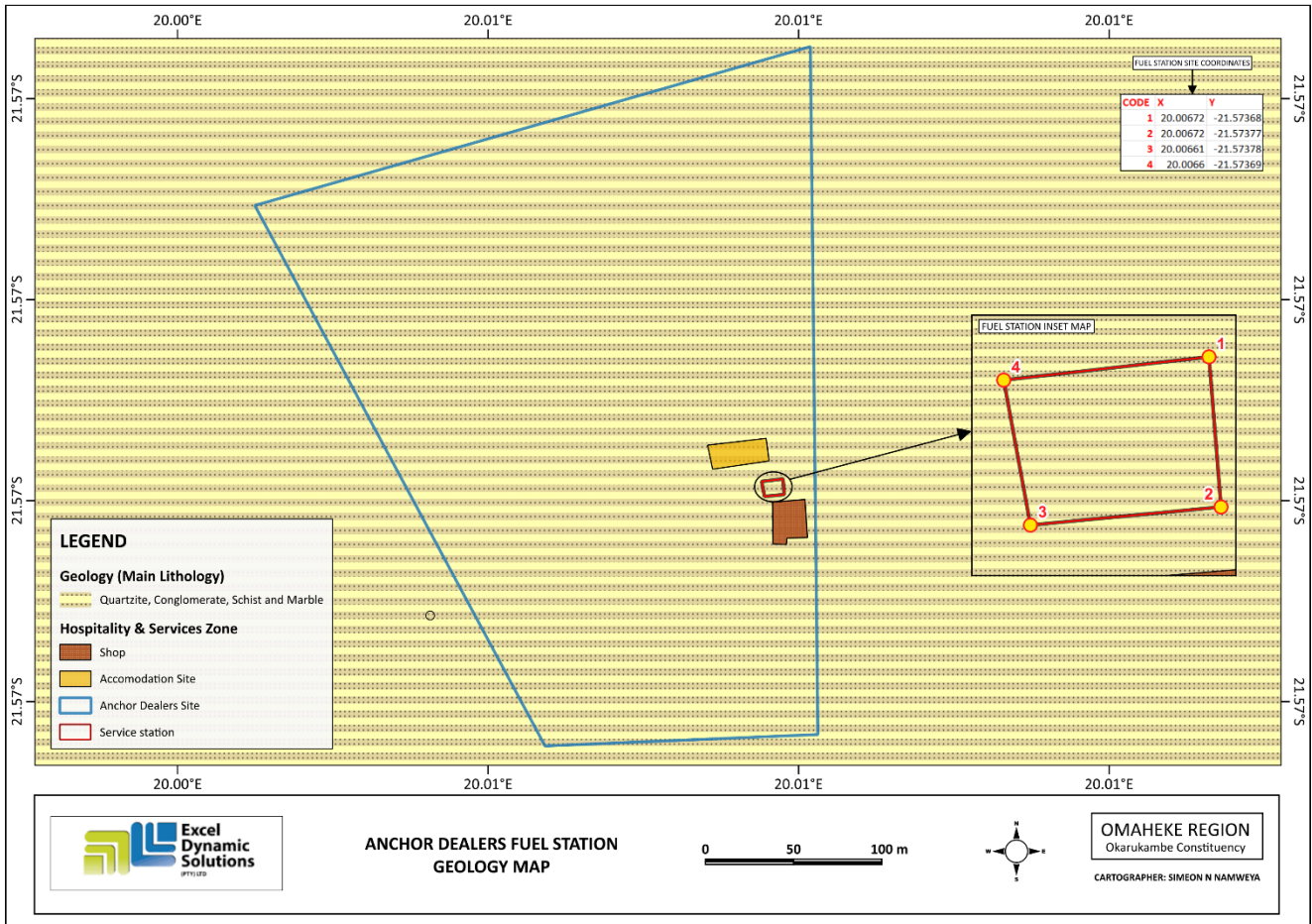


Figure 6: the general geology of the project area

5. RECORD REVIEW

6.1 Environmental Records Review

Environmental records (environmental audit report) from the previous environmental professional were obtained for EDS by the Project Coordinator (Client).

6.2 Historical Information Review

The following historical use information was reviewed:

6.2.1 Historical Topographic Map

EDS reviewed historical topographic maps of the Fuel Retail Facility and surrounding properties using Google Earth and QGIS-generated maps. No special hazards, such as sinkholes, gravel pits, landfills,

pipelines, open pits, stockpiled soils or railroad tracks and spurs, were indicated on the Fuel Retail Facility map.

6. DATA GAPS

After reviewing the sources above regarding the fuel Facility's history, EDS determined that no data gaps would affect the environmental professional's ability to identify RECs for the Fuel Retail Facility, except for the absence of the Environmental Management Plan.

6.1 Specialized Knowledge and Reason for Completing Phase I Audit

Pursuant to EMA 2007, EDS asked a representative of the user of the report, the owner of the fuel retail station facility, if he had any specialized knowledge of environmental conditions associated with the Subject fuel retail facility.

7. SITE RECONNAISSANCE

EDS conducted a site visit to the fuel retail facility in January 2026 and observed its condition. A depiction of the fuel retail station facility and surrounding area configuration is provided in Figure 1. Weather conditions during the site reconnaissance were sunny. The visual reconnaissance consisted of observing the fuel station, the fuel pumps, the underground storage tanks, and the shop, and systematically traversing the site to provide an overlapping field of view wherever possible. The periphery of the on-site structures was observed along with interior accessible common areas, storage and maintenance areas.

During the fuel retail facility reconnaissance, EDS sought the following items, which could indicate the presence of RECs at the facility.

- ***Hazardous Substances and Petroleum Products in Connection with Identified Uses***

No significant use or generation of hazardous substances is known to occur at the fuel retail facility. No manufacturing, fabrication or assembly operations are conducted on the fuel retail facility.

- ***Odors***

No strong, pungent, or noxious odours were noted or reported that would indicate RECs at the fuel retail station facility were emanating from either area.

- ***Pools of Liquids***

No major pools containing liquids likely to be hazardous substances or petroleum products were observed or reported on or adjacent to the fuel retail station facility but there is an evidence of oil spill on site.

- ***Drums & Hazardous Substance, Petroleum Products and Unidentified Substance Containers***

No drums containing liquids likely to be hazardous substances or petroleum products were observed or reported on or adjacent to the Subject fuel retail station facility.

- ***Heating and Cooling Source***

The office area is heated by electricity supplied by CENORED and cooled by window-installed air conditioners located at the rear of the building.

- ***Interior Stains or Corrosion***

No evidence of stains or corrosion on the floors, walls or ceilings at the fuel retail station facility was noted or reported.

- ***Drains and Sumps***

No evidence of sumps was observed.

No significant stained soil or pavement was observed or reported at the fuel retail station facility.

- ***Stressed Vegetation***

No areas of stressed vegetation were observed or reported on or adjacent to the fuel retail station facility.

- ***Solid Waste***

EDS did not observe any areas that appeared to have been filled or graded that would suggest the presence of waste, including, but not limited to, construction debris, demolition debris or other solid waste. No improperly stored solid waste was noted but the dust bin are not cleared marked as to what waste are being stored there .

- ***Waste Water***

No operations, likely to require a significant wastewater discharge, were noted or reported. Waters entering the sanitary system flow to the town's waste collection facilities.

- ***Wells***

No drinking water wells, dry wells, irrigation wells, injection wells, abandoned wells, or other wells were observed or reported.

- ***Septic Systems***

EDS did not observe any on-site septic systems

- ***Copy of EMP***

There is no copy of the EMP or the EMP training manual on site.

8. RECOMMENDATIONS AND CONCLUSIONS

EDS has performed an Environmental Site Audit, in conformance with the Scope of Work developed in cooperation with the client and the provisions of EMA 2007. This assessment has found no evidence of RECs associated with the fuel retail station facility.

A de minimis condition is a condition that generally does not present a threat to human health or the environment, and that generally would not be the subject of an enforcement action if brought to the attention of appropriate governmental agencies. This assessment has revealed no evidence of de minimis conditions.

An historical recognized environmental condition (HREC) refers to an environmental condition which would have been considered a REC in the past, but which is no longer considered a REC based on subsequent assessment and/or remediation of any contaminants to below the most restrictive (generally residential) cleanup target concentrations or regulatory closure with no formal or implied restricted uses. The assessment has revealed no evidence of HRECs in connection with the fuel retail station facility, except for the following:

No significant data gaps were identified that would affect the environmental professional's ability to identify RECs at the fuel retail station.

Based on the information provided in this report, EDS recommends that No Further Action is required at the fuel retail station facility, and that the MEFT consider renewal of the ECC.

9. LIMITATIONS

No environmental assessment or investigation is infallible. Some uncertainty will always exist concerning the presence or absence of potential Recognized Environmental Conditions at a particular fuel retail station facility, irrespective of the rigor of the investigation. Accordingly, EDS does not warrant that Recognized Environmental Conditions, other than those identified in this report, do not exist at the subject fuel retail station facility or may not exist there in the future.

The findings and opinions presented in this report are partially based on information obtained from various sources over which EDS has no control but believes to be reliable. Nonetheless, EDS does not warrant the authenticity or reliability of the information from these sources.

EDS believes that it has performed the services summarised in this report in a manner consistent with the level of care and skill ordinarily exercised by members of the environmental risk assessment profession practising at the same time and under similar conditions in the area of the project.

Conclusions regarding the site's condition do not constitute a warranty. If additional information becomes available concerning this site after the date of this report, EDS is under no obligation to revise the conclusions and recommendations of this report.