

ENVIRONMENTAL SCOPING ASSESSMENT (ESA) FOR THE PROPOSED SMALL SCALE MINING ACTIVITIES ON MINING CLAIMS NO. 76494-76495 LOCATED SOUTH WEST OF TSANDI, OMUSATI REGION.

ENVIRONMENTAL ASSESSMENT REPORT: [Final](#)

ECC Application Reference: APP- 007012

Author: Ms. Iyaloo Nakale	Proponent: Brado Investment cc
Position: Environmental Assessment Practitioner	Contact person: Mr. Samuel Eelukankameni
Company: Excel Dynamic Solutions (Pty) Ltd	Telephone: +264 (0) 81 149 110 7
Telephone: +264 (0) 61 259 530	Fax: N/A
Fax2email: +264 (0) 886 560 836	Postal Address: P.O. Box 129, Opuwo
Email: info@edsnamibia.com	Email: brado.engineering1@gmail.com

EXECUTIVE SUMMARY

Brado Investment cc (herein referred to as The Proponent), has applied to the Ministry of Mines and Energy (MME) for the proposed small-scale mining activities on Mining Claims (MCs) No. 73874-73877. However, the approval and granting of these MCs is subject to an Environmental Clearance Certificate (ECC) from the Ministry of Environment and Tourism (MEF). MC 76494 (17.4176 hectares) and MC 76495 (17.4176 hectares) cover a total area of 34.8352 hectares (ha) and are located about 38 km south west of Tsandi, in Omusati Region as shown in **Figure 1**. The MCs are located in the communal land within Uukwaluudhi communal conservancy as shown in **Figure 2**.

The proponent applied to conduct small-scale mining activities of **Industrial Minerals** as commodity of interest.

Mining and all extraction-related activities are among the listed activities that may not be undertaken without an ECC under the Environmental Impact Assessment (EIA) Regulations. Subsequently, to ensure that the proposed activity is compliant with the national environmental legislation, the project Proponent, appointed an independent environmental consultant, Excel Dynamic Solutions (Pty) Ltd to undertake the required Environmental Assessment (EA) process and apply for the ECC on their behalf.

The application for the ECC was compiled and submitted to the competent authority (Ministry of Environment, Forestry and Tourism (MEFT) as the environmental custodian for project registration purposes. Upon submission of an Environmental Scoping Assessment (ESA) Report and Draft Environmental Management Plan (EMP), an ECC for the proposed project may be considered by the Environmental Commissioner at the MEFT's Department of Environmental Affairs and Forestry (DEAF).

Brief Project Description

Planned Activities: Proposed Exploration Methods

The Proponent intends to adopt a systematic prospecting and exploration approach to the project as follows:

- 1. Non-invasive Technique:** This phase includes geological & geophysical mapping, reviewing of existing geological maps, field evaluation and soil sampling.
- 2. Invasive Technique:** Trenching, pitting and open pit mining using excavators.

Public Consultation

Public Consultation Activities

Regulation 21 of the EIA Regulations details steps to be taken during a public consultation process and these have been used in guiding this process. The public consultation process assisted the Environmental Consultant in identifying all potential impacts and aided in the process of identifying possible mitigation measures and alternatives to certain project activities. The communication with I&APs about the proposed prospecting and exploration activities was done through the following means in this order to ensure that the public is notified and allowed to comment on the proposed project:

- A Background Information Document (BID) containing information about the proposed exploration activities was compiled and emailed upon request to all registered Interested and Affected Parties (I&APs).
- Project Environmental Assessment notices were published in New Era Newspaper (**14 November 2025 and 21 November 2025**) and The Namibian Newspaper (**17 November 2025 and 24 November 2025**), briefly explaining the activity and its locality, inviting members of the public to register as I&APs and submit their comments/concerns.
- Consultation meetings were scheduled and held with the affected landowners.
- The issues and concerns raised were noted and used to form part of the ESA Report and EMP.

Potential Impacts identified

The following potential impacts are anticipated:

- **Positive impacts:** Socio-economic development through employment creation (primary, secondary, and tertiary employment) and skills transfer; Opens up other investment opportunities and infrastructure-related development benefits; Produces a trained workforce and small businesses that can serve communities and may initiate related businesses; Boosts the local economic growth and regional economic development and; Increased support for local businesses through the procurement of consumable items such as Personal Protective Equipment (PPE), machinery spare parts, lubricants, etc.

- **Negative impacts:** Potential disturbance of existing pastoral systems; Physical land/soil disturbance; Impact on local biodiversity (fauna and flora); Habitat disturbance and potential illegal wildlife and domestic hunting in the area; Potential impact on water resources and soils particularly due to pollution; Air quality issue: potential dust generated from the project; Potential occupational health and safety risks, Vehicular traffic safety and impact on services infrastructures such as local roads, Vibrations, and noise associated with drilling activities may be a nuisance to locals; Environmental pollution (solid waste and wastewater), Archaeological and heritage impact and Potential social nuisance and conflicts (theft, damage to properties, etc.).

The potential negative impacts were assessed, and mitigation measures were provided accordingly.

CONCLUSIONS AND RECOMMENDATIONS

Conclusions

The potential impacts that are anticipated from the proposed project activities were identified, described, and assessed. For the significant adverse (negative) impacts with a medium rating, appropriate management, and mitigation measures were recommended for implementation by the Proponent, their contractors, and project-related employees.

The public was consulted as required by the EMA and its 2012 EIA Regulations (Sections 21 to 24). This was done via the two newspapers (New Era and The Namibian) used for this environmental assessment. A consultation through a face-to-face meeting with directly affected landowners in Otjokojo village whereby they raised concerns and comments on the proposed project activities.

The issues and concerns raised by the registered I&APs formed the basis for this Report and the Draft EMP. The issues were addressed and incorporated into this Report whereby mitigation measures have been provided thereof to avoid and/or minimize their significance on the environmental and social components. Most of the potential impacts were found to be of medium-rating significance. With the effective implementation of the recommended management and mitigation measures, will particularly see a reduction in the significance of adverse impacts that cannot be avoided completely (from medium rating to low). To maintain the desirable rating, the implementation of management and mitigation measures should be monitored by the Proponent

directly, or their Environmental Control Officer (ECO) is highly recommended. The monitoring of this implementation will not only be done to maintain the reduced impacts' rating or maintain a low rating but to also ensure that all potential impacts identified in this study and other impacts that might arise during implementation are properly identified in time and addressed right away too.

It is crucial for the Proponent and their contractors as well as to effectively implement the recommended management and mitigation measures to protect both the biophysical and social environment throughout the project duration. All these would be done to promote environmental sustainability while ensuring a smooth and harmonious existence and purpose of the project activities in the community and environment at large.

Recommendations

The Environmental Consultant is confident that the potential negative impacts associated with the proposed project activities can be managed and mitigated by the effective implementation of the recommended management and mitigation measures and with more effort and commitment put into monitoring the implementation of these measures.

It is, therefore, recommended that the proposed prospecting and exploration activities be granted an ECC, provided that:

- All the management and mitigation measures provided herein are effectively and progressively implemented.
- All required permits, licenses, and approvals for the proposed activities should be obtained as required. These include permits and licenses for land use access agreements to explore and ensure compliance with these specific legal requirements.
- The Proponent and all their project workers or contractors comply with the legal requirements governing their project and its associated activities and ensure that project permits and or approvals required to undertake specific site activities are obtained and renewed as stipulated by the issuing authorities.
- Site areas where exploration activities have ceased are rehabilitated, as far as practicable, to their pre-exploration state.

- Environmental Compliance monitoring reports should be compiled and submitted to the DEAF Portal as per the provision made on the MEFT/DEAF's portal.

Disclaimer

Excel Dynamic Solutions (EDS) warrants that the findings and conclusion contained herein were accomplished following the methodologies outlined in the Scope of Work and Environmental Management Act (EMA) of 2007. These methodologies are described as representing good customary practice for conducting an EIA of a property to identify recognized environmental conditions. There is a possibility that even with the proper application of these methodologies there may exist subject property conditions that could not be identified within the scope of the assessment, or which were not reasonably identifiable from the available information. The Consultant believes that the information obtained from the record review and during the public consultation processes concerning the proposed exploration work is reliable. However, the Consultant cannot and does not warrant or guarantee that the information provided by the other sources is accurate or complete. The conclusions and findings outlined in this report are strictly limited in time and scope to the date of the evaluations. No other warranties are implied or expressed.

Some of the information provided in this report is based on personal interviews, and research of available documents, records, and maps held by the appropriate government and private agencies. This report is subject to the limitations of historical documentation, availability, and accuracy of pertinent records, and the personal recollections of those persons contacted.

TABLE OF CONTENTS

EXECUTIVE SUMMARY	i
LIST OF FIGURES.....	vii
LIST OF TABLES	viii
1 INTRODUCTION.....	13
1.1 Project Background.....	13
1.2 Terms of Reference, Scope of Works, and Appointed EA Practitioner	15
1.3 Motivation for the Proposed Project	15
2 PROJECT DESCRIPTION: PROPOSED SMALL SCALE MINING ACTIVITY	16
2.1 Pre-development Phase.....	16
2.2.....	16
2.2 Decommissioning and Rehabilitation Phase.....	18
3 PROJECT ALTERNATIVES.....	19
3.1 Types of Alternatives Considered.....	19
3.1.1 The "No-go" Alternative	19
3.1.2 Small-scale mining activities Location.....	20
3.1.3 Small-scale mining Methods.....	21
4 LEGAL FRAMEWORK: LEGISLATION, POLICIES AND GUIDELINES	22
4.1 The Environmental Management Act (No. 7 of 2007)	22
4.2 International Policies, Principles, Standards, Treaties, and Conventions	32
5 ENVIRONMENTAL AND SOCIAL BASELINE	36
5.1 Biophysical Environment.....	36
5.1.1 Climate	36
5.1.2 Topography	38
5.1.3 Geology.....	38
5.1.4 Soil.....	39
5.1.5 Water Resources: Groundwater and Surface Water	41
5.1.6 Flora and Fauna	41
5.2 Heritage and Archaeology	43
5.2.1 Local Level and Archaeological Findings	43
5.3 Surrounding Land Uses.....	43
5.4 Socio-Economic conditions.....	44

6	PUBLIC CONSULTATION PROCESS	45
6.1	Pre-identified and Registered Interested and Affected Parties (I&APs).....	45
6.2	Communication with I&APs	46
7	IMPACT IDENTIFICATION, ASSESSMENT AND MITIGATION MEASURES	48
7.1	Impact Identification	48
7.2	Impact Assessment Methodology.....	49
7.2.1	Extent (spatial scale).....	49
7.2.2	Duration	50
7.2.3	Intensity, Magnitude/severity	50
7.2.4	Probability of occurrence.....	51
7.2.5	Significance	51
7.3	Assessment of Potential Negative Impacts.....	53
7.3.1	Disturbance to grazing areas.....	53
7.3.2	Land Degradation and Loss of Biodiversity.....	54
7.3.3	Generation of Dust (Air Quality).....	55
7.3.4	Water Resources Use.....	55
7.3.5	Soil and Water Resources Pollution.....	56
7.3.6	Waste Generation	57
7.3.7	Occupational Health and Safety Risks.....	57
7.3.8	Vehicular Traffic Use and Safety	58
7.3.9	Noise and vibrations	59
7.3.10	Disturbance to Archaeological and Heritage Resources.....	59
7.3.11	Impact on Local Roads/Routes	60
7.3.12	Social Nuisance: Local Property intrusion and Disturbance/Damage.....	60
7.4	Cumulative Impacts Associated with Proposed Exploration.....	61
8	RECOMMENDATIONS AND CONCLUSION.....	61
8.1	Recommendations	61
8.2	Conclusion	62
9	REFERENCES	63

LIST OF FIGURES

Figure 1: Locality map for MCs No.75460-75468	14
---	----

Figure 2: The location of MCs 75460-75468 on the National Mining Cadastre	21
Figure 3: Climate condition around the project area, Epupa, Kunene region (source: https://en.climate-data.org/africa/namibia/kunene-region/epupa-896579/)	Error! Bookmark not defined.
Figure 4: Topographic map of the project area	Error! Bookmark not defined.
Figure 5: General geology and lithology map of the MCs.....	Error! Bookmark not defined.
Figure 6: Dominant soil type on the MCs	40
Figure 7: Observed soil type.....	40
Figure 8: Hydrology map for the MCs	Error! Bookmark not defined.
Figure 9: Vegetation map.....	42
Figure 10: Vegetation observed on the MCs	42
Figure 11: Land use map	Error! Bookmark not defined.
Figure 12: Observed homesteads.....	Error! Bookmark not defined.
Figure 13: Public notice placed at.....	Error! Bookmark not defined.
Figure 14: Public Consultation	Error! Bookmark not defined.

LIST OF TABLES

Table 1: Applicable local, national and international standards, policies and guidelines governing the proposed prospecting and exploration activities.....	Error! Bookmark not defined.
Table 2: International Policies, Principles, Standards, Treaties and Convention applicable to the project	Error! Bookmark not defined.
Table 3: Summary of Interested and Affected Parties (I&APs).....	46
Table 4: Summary of main issues raised, and comments received during public meeting engagements	47
Table 5: Extent or spatial impact rating	50
Table 6:Duration impact rating	50
Table 7:Intensity, magnitude, or severity impact rating.....	50
Table 8:Probability of occurrence impact rating	51
Table 9:Significance rating scale	52
Table 10:Assessment of the impacts of exploration on grazing areas	53
Table 11:Assessment of the impacts of exploration on biodiversity.....	54
Table 12: Assessment of the impacts of exploration on air quality	55
Table 13: Assessment of the project impact on water resource use and availability	56
Table 14: Assessment of the project impact on soils and water resources (pollution).....	56
Table 15: Assessment of waste generation impact	57
Table 16: Assessment of the impacts of exploration on health and safety	58
Table 17: Assessment of the impacts of exploration on-road use (vehicular traffic).....	58
Table 18: Assessment of the impacts of noise and vibrations from exploration	59
Table 19: Assessment of the impacts of exploration on archaeological & heritage resources....	59
Table 20: Assessment of exploration of local services (roads and water)	60
Table 21: Assessment of the social impact of community property damage or disturbance	60

LIST OF APPENDICES (To be submitted to MEFT and MME)

Appendix A: Copy of the Environmental Clearance Certificate (ECC) Application Form 1

Appendix B: Draft Environmental Management Plan (EMP)

Appendix C: Curricula Vitae (CV) for the Environmental Assessment Practitioner (EAP)

Appendix D: List of Interested and Affected Parties (I&APs) and Attendance Register

Appendix E: Background Information Document (BID)

Appendix F: EIA Notification in the newspapers (New Era and the Namibian)

Appendix G: Consultation Meeting Minutes

Appendix H: Mineral License

LIST OF ABBREVIATIONS

Abbreviation	Meaning
AMSL	Above Mean Sea Level
BID	Background Information Document
CV	Curriculum Vitae
DEA	Department of Environmental Affairs
EA	Environmental Assessment
EAP	Environmental Assessment Practitioner
ECC	Environmental Clearance Certificate
EDS	Excel Dynamic Solutions
ESA	Environmental Scoping Assessment
EMA	Environmental Management Act
EMP	Environmental Management Plan
MCs	Mining Claims
GG	Government Gazette

GN	Government Notice
I&APs	Interested and Affected Parties
MEFT	Ministry of Environment, Forestry, and Tourism
MME	Ministry of Mines and Energy
PPE	Personal Protective Equipment
Reg	Regulation
S	Section
TOR	Terms of Reference

DEFINITION OF TERMS

Alternative	A possible course of action, in place of another would meet the same purpose and need of the proposal.
Baseline	Work done to collect and interpret information on the condition/trends of the existing environment.
Biophysical	That part of the environment does not originate with human activities (e.g. biological, physical, and chemical processes).
Cumulative Impacts/Effects Assessment	About an activity, means the impact of an activity that in it may not be significant but may become significant when added to the existing and potential impacts eventuating from similar or diverse activities or undertakings in the area.
Decision-maker	The person(s) entrusted with the responsibility for allocating resources or granting approval to a proposal.
Ecological Processes	Processes play an essential part in maintaining ecosystem integrity. Four fundamental ecological processes are the cycling of water, the cycling of nutrients, the flow of energy, and biological diversity (as an expression of evolution).

Environment	As defined in the Environmental Management Act - the complex of natural and anthropogenic factors and elements that are mutually interrelated and affect the ecological equilibrium and the quality of life, including – (a) the natural environment that is land, water, and air; all organic and inorganic matter and living organisms and (b) the human environment that is the landscape and natural, cultural, historical, aesthetic, economic and social heritage and values.
Environmental Management Plan	As defined in the EIA Regulations (Section 8(j)), a plan that describes how activities that may have significant environments effects are to be mitigated, controlled, and monitored.
Interested and Affected Party (I&AP)	Concerning the assessment of a listed activity includes - (a) any person, group of persons, or organization interested in or affected by the activity; and (b) any organ of state that may have jurisdiction over any aspect of the activity. Mitigate - practical measures to reduce adverse impacts. Proponent – as defined in the Environmental Management Act, a person who proposes to undertake a listed activity. Significant impact - means an impact that by its magnitude, duration, intensity, or probability of occurrence may have a notable effect on one or more aspects of the environment.
Fauna	All of the animals that are found in a given area.
Flora	All of the plants are found in a given area.
Mitigation	The purposeful implementation of decisions or activities that are designed to reduce the undesirable impacts of a proposed action on the affected environment.

Monitoring	Activity involving repeated observation, according to a pre-determined schedule, of one or more elements of the environment to detect their characteristics (status and trends).
Nomadic Pastoralism	Nomadic pastoralists live in societies in which the husbandry of grazing animals is viewed as an ideal way of making a living and the regular movement of all or part of the society is considered a normal and natural part of life. Pastoral nomadism is commonly found where climatic conditions produce seasonal pastures but cannot support sustained agriculture.
Proponent	Organization (private or public sector) or individual intending to implement a development proposal.
Public Consultation/Involvement	A range of techniques can be used to inform, consult or interact with stakeholders affected by the proposed activities.
Protected Area	Refers to a protected area that is proclaimed in the Government Gazette according to the Nature Conservation Ordinance number 4 of 1975, as amended
Scoping	An early and open activity to identify the impacts that are most likely to be significant and require specialized investigation during the EIA work. Can, also be used to identify alternative project designs/sites to be assessed, obtain local knowledge of the site and surroundings, and prepare a plan for public involvement. The results of scoping are frequently used to prepare a Terms of Reference for the specialized input into full EIA.
Terms of Reference (ToR)	Written requirements governing full EIA input and implementation, consultations to be held, data to be produced, and form/contents of the EIA report. Often produced as an output from scoping.

1 INTRODUCTION

1.1 Project Background

Brado Investment cc (herein referred to as The Proponent), has applied to the Ministry of Mines and Energy (MME) for the proposed small-scale mining activities on Mining Claims (MCs) No. 73874-73877. However, the approval and granting of these MCs is subject to an Environmental Clearance Certificate (ECC) from the Ministry of Environment and Tourism (MEF). MC 76494 (17.4176 hectares) and MC 76495 (17.4176 hectares) cover a total area of 34.8352 hectares (ha) and are located about 38 km south west of Tsandi, in Omusati Region as shown in **Figure 1**. The MCs are located in the communal land within Uukwaluudhi communal conservancy as shown in **Figure 2**.

The proponent applied to conduct small-scale mining activities of **Industrial Minerals** as commodity of interest.

Section 27 (1) of the Environmental Management Act (EMA) (No. 7 of 2007) and its 2012 Environmental Impact Assessment (EIA) Regulations, provides a list of activities that may not be carried out without an EIA undertaken and an ECC obtained. Exploration activities are listed among activities that may not occur without an ECC. Therefore, individuals or organizations may not carry out exploration activities without an ECC awarded to the Proponent.

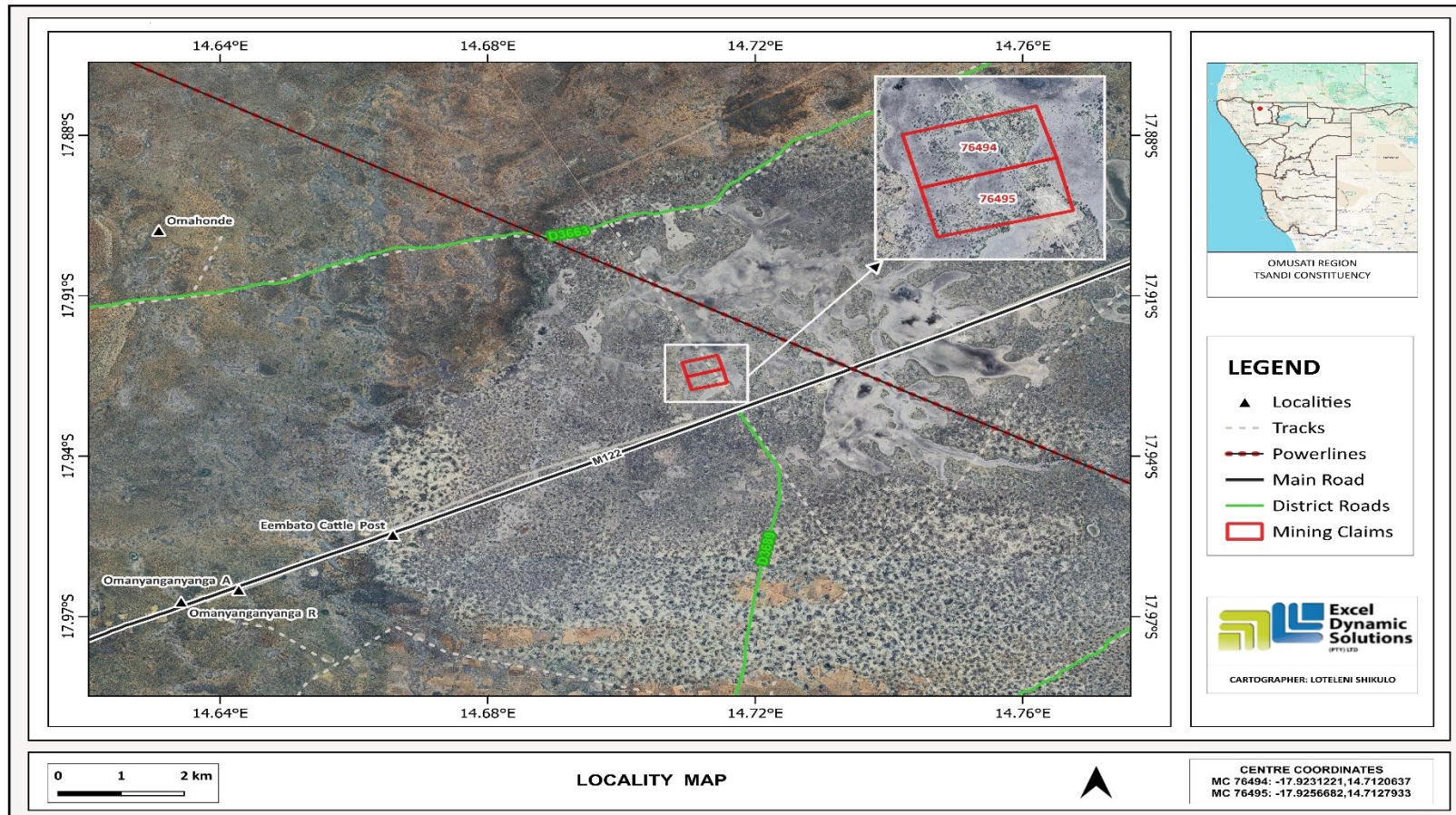


Figure 1: Locality map for MCs No. 76494-76495

1.2 Terms of Reference, Scope of Works, and Appointed EA Practitioner

To satisfy the requirements of the EMA and its 2012 EIA Regulations, The Proponent appointed EDS to conduct the required Environmental Assessment (EA) process on their (Proponent's) behalf, and thereafter, apply for an ECC for small-scale mining works on the MCs. There were no formal Terms of Reference (ToR) provided to EDS by the Proponent. The consultant, instead, relied on the requirements of the Environmental Management Act (No. 7 of 2007) (EMA) and its EIA Regulations (GN. No. 30 of 2012) to conduct the study.

The application for the ECC (**Appendix A**) is compiled and submitted to the Ministry of Environment, Forestry, and Tourism (MEFT), the environmental custodian for project registration purposes. Upon submission of an Environmental Scoping Assessment (ESA) Report and Draft Environmental Management Plan (EMP) (**Appendix B**), an ECC for the proposed project may be considered by the Environmental Commissioner at the MEFT Department of Environmental Affairs and Forestry (DEAF).

The EIA project is headed by Ms. Iyaloo Nakale, a qualified and experienced Environmental Assessment Practitioner (EAP). The consultation process and reporting is done by the EAP and their CV is presented in **Appendix C**.

1.3 Motivation for the Proposed Project

The mining industry is one of the largest contributors to the Namibian economy, it contributes to the improvement of local livelihoods. In Namibia, the exploration and mining of minerals is done mainly by the private sector. Mining activities have a great potential to enhance and contribute to the development of other sectors and their activities do provide temporary employment, and taxes that fund social infrastructural development. The minerals sector yields foreign exchange and accounts for a significant portion of the gross domestic product (GDP). Additionally, the industry produces a trained workforce and small businesses that can serve communities and may initiate related businesses. Exploration activity fosters several associated activities such as the manufacturing of exploration and mining equipment, and the provision of engineering and environmental services. The mining sector forms a vital part of some of Namibia's development plans, namely: Vision 2030, National Development Plan 5 (NDP5), and Harambee Prosperity Plans (HPPs) I and II. Mining is essential to the development goals of Namibia in contributing to meeting the ever-increasing global demand for minerals, and for national prosperity. Successful small-scale mining of MCs No. 76494-76495 would lead to the mining of the target mineral, which would contribute towards achieving the goals of the national development plans.

2 PROJECT DESCRIPTION: PROPOSED SMALL SCALE MINING ACTIVITY

The description of small-scale mining activities and stages to be undertaken is presented below as well as the decommissioning of the mining activities

2.1 Pre-development Phase

The small scale mining phase includes reconnaissance and mapping to identify the lithostratigraphic packages. In addition, literature review, fieldwork (lithological (soil/rock) mapping and sampling) will be conducted to verify desktop work.

2.2 Operation and maintenance phase

During this phase, extraction of minerals and all associated mining activities are carried out on site. Both, invasive and non-invasive activities are expected to take place. Non-invasive activities include detailed mapping. No ground geophysical surveys are planned for the project. While invasive activities involve trenching and pitting, open pit mining.

A 10 year period of small scale mining period is predicted. The selection of the potential mineralization model and mineral targets will be based on the local geology, trenching, and assay results of the samples collected. No explosives will be used during the operational phase.

Other aspects of the proposed small-scale mining activities operations include:

2.1.1 Accessibility to Site

The MCs are accessible via the M122 and D3689 roads, Omusati Region.. Therefore, all project related vehicles will be using these existing roads to access the MCs. It is also anticipated that, if necessary, onsite new tracks to the different targeted mining site within the MCs will be created. The Proponent may need to do some upgrade on the site access roads to ensure that they fit to accommodate project related vehicles, such as heavy trucks.

2.1.2 Material and Equipment

The requirements of the small-scale mining activities program in terms of vehicles and equipment include: (4X4) vehicles, a truck, water tanks, drill rigs and drilling support machines, and a power generator. Equipment and vehicles will be stored at a designated area near the accommodation site or a storage site established within the MCs area.

2.1.3 Services and Infrastructure

- **Water:** Water for the operational phase will be obtained from the nearest existing boreholes near the mining claims or nearest town. This will be done upon agreement with the community members but in case the proponent needs to source water somewhere, that will be through approved water sources and also water abstraction permits from relevant authority. Estimated monthly water consumptions are at +- 3000 liters, which includes water for drinking, sanitation, cooking, dust control, as well as washing equipment. Potable water will also be made available for the mining crew (workers) on site.
- **Power supply:** Power required during the operation phase will be provided from dieselgenerators. About 2000 litres of diesel will be used per day.
- **Fuel (diesel for generators and other equipment):** The fuel (diesel) required for small-scale mining activities equipment will be stored in a tank mounted on a mobile trailer, and drip trays will be readily available on this trailer and monitored to ensure that accidental fuel spills are cleaned up as soon as they have been detected/observed. Fuel may also be stored in abunded diesel bowser on site, and in jerry cans placed on plastic sheeting to avoid unnecessary contamination of soils.

2.1.4 Waste Management

The site will be equipped with secured waste bins for each type of waste (i.e., domestic, hazardous, and recyclable). Depending on the amount generated, waste will be sorted and collected as regularly as possible and taken to the nearest certified landfill site. An agreement will need to be reached with different waste management facility operators/owners and authorization or permits will be obtained before utilizing these facilities, in the case of generation of any hazardous waste.

- **Sanitation and human waste:** Portable ablution facilities will be used, and the sewage will be disposed of according to the approved disposal or treatment methods of the waste products.
- **Hazardous waste:** Drip trays and spill control kits will be available on-site to ensure that oil/fuel spills and leaks from vehicles and equipment are captured on time and contained correctly before polluting the site.

The waste produced on-site can also be categorized as mineral or non-mineral waste:

- **Mineral Waste:** Consists of solid products of exploration and mineral concentration to acquire the targeted minerals. Mineral waste will potentially be produced throughout the project exploration phase. This waste will be stripped and dumped in allocated areas as stipulated in the EMP.
- **Non-mineral Waste:** Consists primarily of auxiliary materials that will support the exploration phase. This includes but is not limited to items such as empty containers, plastic, etc., and other domestic waste. This waste will be collected, sorted, and taken to the dumpsite as regularly as necessary.

2.1.5 Safety and Security

- **Storage Site:** Temporary storage areas for exploration material, equipment, and machinery will be required at the campsite and/or exploration sites. Security will be supplied on a 24-hour basis at the delegated sites for storage. A temporary support fence surrounding the storage site will be constructed to ensure people and domestic animals are not put at risk.
- **Fire management:** A minimum of basic firefighting equipment, i.e., fire extinguishers will be readily available in vehicles, at the working sites and camps. The exploration crew is required to have the contact details of the nearest fire station at hand in case of a larger scale of fires at the site.
- **Health and Safety:** Adequate and appropriate Personal Protective Equipment (PPE) will be provided to every project personnel while on and working at the site. A first aid kit will be readily available on-site to attend to potential minor injuries.

2.1.6 Accommodation

The mining crew will be accommodated in nearest town, but if accommodation camp is to be set up near the MCs, necessary arrangements will be made with the land owner. All mining activities will take place during daytime only and staff will commute to site(s) from their place of accommodation if they are not accommodated on site

2.2 Decommissioning and Rehabilitation Phase

Once the mining activities on the MCs come to an end, the Proponent will need to put site rehabilitation measures in place. Decommissioning and rehabilitation are primarily reinforced through a decommissioning and rehabilitation plan, which consists of safety, health, environmental, and contingency aspects. An unfavorable economic situation or unconvincing

exploration results might force the Proponent to cease the exploration program before the predicted closure. Therefore, it is best practice for the Proponent to ensure the project activities cease in an environmentally friendly manner and the site is rehabilitated.

3 PROJECT ALTERNATIVES

Alternatives are defined as the “different means of meeting the general purpose and requirements of the activity” (EMA, 2007). This section highlights the different ways in which the project can be undertaken, and identifies alternatives that may be the most practical, but least damaging to the environment.

Once the alternatives have been established, these are examined by asking the following three questions:

- What alternatives are technically and economically feasible?
- What are the environmental effects associated with the feasible alternatives?
- What is the rationale for selecting the preferred alternative?

The alternatives considered for the proposed development are discussed in the following subsections.

3.1 Types of Alternatives Considered

3.1.1 The "No-go" Alternative

The “no action” alternative implies that the status quo remains, and nothing happens. Should the proposal of small-scale mining activities on the MCs, be discontinued, none of the potential impacts (positive and negative) identified would occur. If the proposed project is to be discontinued, the current land use for the proposed site will remain unchanged.

This no-go option is considered and a comparative assessment of the environmental and socio-economic impacts of the “no action” alternative, is undertaken to establish what benefits might be lost if the project is not implemented. The key losses that may never be realized if the proposed project does not go ahead include:

- Loss of foreign direct investment.
- About ten (10) temporary job opportunities for community members will not be realized.

- No realization of local business supports through the procurement of consumable items such as Personal Protective Equipment (PPE), machinery spare parts, lubricants, etc.
- Loss of potential income to the local and national government through land lease fees, license lease fees, and various tax structures.
- Improved geological understanding of the site area regarding the targeted commodities.
- Socio-economic benefits such as skills acquisition for local community members would be not realized.

Considering the above losses, the “no-action/go” alternative may not necessarily be considered a viable option for this project, although, in the case where parts of the project site are considered environmentally sensitive and/or protected, one or several sections of the site may be identified as no-go zones.

3.1.2 Small-scale mining activities Location

The mining location is dependent on the geological setting (regional and local), the economic geology, and the small-scale mining activities and mining history of the MCs area. Therefore, finding an alternative location for the planned mining activities is not possible. This means that the mineralization of the target commodities is area-specific, and exploration targets are primarily determined by the geology (host rocks) and the tectonic environment of the site (an ore-forming mechanism). The tenement has a sufficient surface area for future related facilities, should an economic mineral deposit be defined.

Furthermore, the national mineral resources’ potential locations are also mapped and categorized by the Ministry of Mines and Energy, on exclusive prospecting licenses, mining licenses and claims, mineral deposit retention licenses, reconnaissance licenses, and exclusive reconnaissance licenses. Available information on the MCs (**Figure 2**) and other licenses are available on the Namibia Mining Cadastral Map here: <https://portal.mme.gov.na/page/MapPublic>

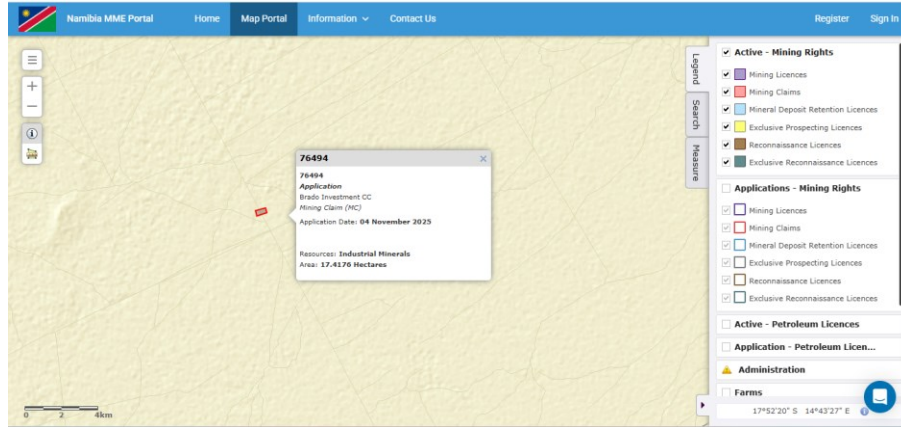


Figure 2: The location of MCs 76494-76495 on the National Mining Cadastre

3.1.3 Small-scale mining Methods

Both invasive and non-invasive exploration activities as indicated under the project description chapter are expected to take place. If an economically viable discovery is made, the project will proceed to the mining phase upon approval of a mining EIA and issuance of a mining license. If any other alternative viable mining methods are found to achieve the purpose more effectively and/or efficiently without aggravating any environmental measures put in place, it can be implemented.

4 LEGAL FRAMEWORK: LEGISLATION, POLICIES AND GUIDELINES

Small-scale mining activities have legal implications associated with certain applicable legal standards. A summary of applicable and relevant international policies and Namibian legislation, policies, and guidelines for the proposed development is given in this section (**Table 2**). This summary serves to inform the project Proponent, Interested and Affected Parties, and the decision-makers at the DEAF, of the requirements and expectations, as laid out in terms of these instruments, to be fulfilled to establish the proposed prospecting and exploration activities.

4.1 The Environmental Management Act (No. 7 of 2007)

This EIA was carried out according to the Environmental Management Act (EMA) and its Environmental Impact Assessment (EIA) Regulations (GG No. 4878 GN No. 30).

The EMA has stipulated requirements to complete the required documentation to obtain an ECC for permission to undertake certain listed activities. These activities are listed under the following Regulations:

- *3.1 The construction of facilities for any process or activities which requires a license, the right of other forms of authorization, and the renewal of a license, right, or other forms of authorization, in terms of the Minerals (Prospecting and Mining Act, 1992).*
- *3.2 other forms of mining or extraction of any natural resources whether regulated by law or not.*
- *3.3 Resource extraction, manipulation, conservation, and related activities.*

The Environmental Impact Assessment (EIA) Regulations GN 28-30 (GG 4878) detail requirements for public consultation within a given environmental assessment process (GN 30 S21). The EIA regulations also outline the required details of a Scoping Report (GN 30 S8) and an Assessment Report (GN 30 S15).

Other legal obligations that are relevant to the proposed mining activities on MCs No. 76494-76495 and related activities are presented.

Table 1: Applicable local, national and international standards, policies and guidelines governing the proposed prospecting and exploration activities

Legislation / Policy / Guideline: Custodian	Relevant Provisions	Implications for this project
<p>The Constitution of the Republic of Namibia, 1990 as amended:</p> <p>Government of the Republic of Namibia</p>	<p>The Constitution of the Republic of Namibia (1990 as amended) addresses matters relating to environmental protection and sustainable development. Article 91(c) defines the functions of the Ombudsman to include:</p> <p>“...the duty to investigate complaints concerning the over-utilization of living natural resources, the irrational exploitation of non-renewable resources, the degradation and destruction of ecosystems and failure to protect the beauty and character of Namibia...”</p> <p>Article 95(l) commits the state to actively promoting and maintaining the welfare of the people by adopting policies aimed at the:</p> <p>“...Natural resources situated in the soil and on the subsoil, the internal waters, in the sea, in the continental shelf, and in the exclusive economic zone are property of the State.”</p>	<p>By implementing the environmental management plan, the establishment will be conformant to the constitution in terms of environmental management and sustainability.</p> <p>Ecological sustainability will be the main priority for the proposed development.</p>
<p>Minerals (Prospecting and</p>	<p>Section 52 requires mineral license holders to enter into a written</p>	<p>The Proponent should enter into a written agreement with</p>

Legislation / Policy / Guideline: Custodian	Relevant Provisions	Implications for this project
<p>Mining) Act (No. 33 of 1992): Ministry of Mines and Energy (MME)</p>	<p>agreement with affected landowners before exercising rights conferred upon the license holder.</p> <p>Section 52(1) mineral license holder may not exercise his/her rights in any town or village, on or in a proclaimed road, land utilized for cultivation, within 100m of any water resource (borehole, dam, spring, drinking trough, etc.) and boreholes, or no operations in municipal areas, etc.), which should individually be checked to ensure compliance.</p> <p>Section 54 requires a written notice to be submitted to the Mining Commissioner if the holder of a mineral license intends to abandon the mineral license area.</p> <p>Section 68 stipulates that an application for Mining Claims (MCs) shall contain the particulars of the condition of, and any existing damage to, the environment in the area to which the application relates and an estimate of the effect which the proposed prospecting operations may have on the environment and the measures to be taken to prevent or minimize any such effect.</p>	<p>landowners before exploring their land. On communal land, the Proponent should engage the landowners for land use consent.</p> <p>An assessment of the impact on the receiving environment should be carried out.</p> <p>The Proponent should include as part of their application for the MCs, measures by which they will rehabilitate the areas where they intend to carry out mineral exploration activities.</p> <p>The Proponent may not carry out mining activities within the areas limited by Section 52 (1) of this Act.</p>

Legislation / Policy / Guideline: Custodian	Relevant Provisions	Implications for this project
	Section 91 requires that rehabilitation measures should be included in an application for a mineral license.	
Nature Conservation Amendment Act, No. 3 of 2017: Ministry of Environment, Forestry and Tourism (MEFT)	National Parks are established and gazetted following the Nature Conservation Ordinance, 1975 (4 of 1975), as amended. The Ordinance provides a legal framework concerning the permission of entering a state-protected area, as well as requirements for individuals damaging objects (geological, ethnological, archaeological, and historical) within a protected area. Though the Ordinance does not specifically refer to mining as an activity within a protected area (PA) or recreational area (RA), it does restrict access to PAs and prohibits certain acts therein as well as the purposes for which permission to enter game parks and nature reserves may be granted.	The MCs fall within the Uukwaluudhi Communal Conservancy. Therefore, the Proponent will be required to enhance the conservation of biodiversity and the maintenance of the ecological integrity of protected areas and another State land in the Project Site area. The Proponent will also be required to comply with the existing and planned local operational management plans, regulations, and guidelines.
The Parks and Wildlife Management Bill of 2008: Ministry of Environment, Forestry and Tourism (MEFT)	Aims to provide a regulatory framework for the protection, conservation, and rehabilitation of species and ecosystems, the sustainable use and sustainable management of indigenous biological resources, and the management of protected areas, to	

Legislation / Policy / Guideline: Custodian	Relevant Provisions	Implications for this project
	conserve biodiversity and contribute to national development.	
Mine Health & Safety Regulations, 10th Draft: Ministry of Health and Social Services (MHSS)	Makes provision for the health and safety of persons employed or otherwise present in the mineral licenses area. These deal with among other matters; clothing and devices; design, use, operation, supervision, and control of machinery; fencing and guards; and safety measures during repairs and maintenance.	The Proponent should comply with all these regulations concerning their employees.
Petroleum Products and Energy Act (No. 13 of 1990) Regulations (2001): Ministry of Mines and Energy (MME)	Regulation 3(2)(b) states that “No person shall possess [sic] or store any fuel except under the authority of a license or a certificate, excluding a person who possesses or stores such fuel in a quantity of 600 liters or less in any container kept at a place outside a local authority area”	The Proponent should obtain the necessary authorization from the MME for the storage of fuel on-site.
The Regional Councils Act (No. 22 of 1992): Ministry of Urban and Rural Development (MURD)	This Act sets out the conditions under which Regional Councils must be elected and administer each delineated region. From a land use and project planning perspective, their duties include, as described in section 28 “to undertake the planning of the development of the region for which it has been established with a view to	The relevant Regional Councils are IAPs and must be consulted during the Environmental Assessment (EA) process. The project site falls under the Kunene Regional Council; therefore, they should be consulted.

Legislation / Policy / Guideline: Custodian	Relevant Provisions	Implications for this project
	physical, social and economic characteristics, urbanization patterns, natural resources, economic development potential, infrastructure, land utilization pattern and sensitivity of the natural environment.	
Water Act 54 of 1956: Ministry of Agriculture, Water and Land Reform (MAWLR)	The Water Resources Management Act 11 of 2013 is present without regulations; therefore, the Water Act No 54 of 1956 is still in force: Prohibits the pollution of water and implements the principle that a person disposing of effluent or waste has a duty of care to prevent pollution (S3 (k)). Provides for control and protection of groundwater (S66 (1), (d (ii)). Liability of clean-up costs after closure/abandonment of an activity (S3 (l)). (l)).	The protection (both quality and quantity/abstraction) of water resources should be a priority. The permits and license required thereto should be obtained from MAWLR's relevant Departments (these permits include Borehole Drilling Permits, Groundwater Abstraction & Use Permits, and when required, Wastewater / Effluent Discharge Permits).
Water Resources Management Act (No 11 of 2013): Ministry of Agriculture, Water and Land Reform (MAWLR)	The Act provides for the management, protection, development, use, and conservation of water resources; provides for the regulation and monitoring of water services, and provides for incidental matters. The objects of this Act are to:	

Legislation / Policy / Guideline: Custodian	Relevant Provisions	Implications for this project
	Ensure that the water resources of Namibia are managed, developed, used, conserved, and protected in a manner consistent with, or conducive to, the fundamental principles set out in Section 66 - protection of aquifers, Subsection 1 (d) (iii) provide for preventing the contamination of the aquifer and water pollution control (S68).	
National Heritage Act No. 27 of 2004: Ministry of Education, Arts, and Culture (MEAC)	To provide for the protection and conservation of places and objects of heritage significance and the registration of such places and objects; to establish a National Heritage Council; to establish a National Heritage Register; and to provide for incidental matters.	The Proponent should ensure compliance with this act's requirements. The necessary management measures and related permitting requirements must be taken. This is done by consulting with the National Heritage Council (NHC) of Namibia. The management measures should be incorporated into the Draft EMP.
The National Monuments Act (No. 28 of 1969): Ministry of Education, Arts, and Culture (MEAC)	The Act enables the proclamation of national monuments and protects archaeological sites.	
Soil Conservation Act (No 76 of 1969): Ministry	The Act makes provision for the prevention and control of soil erosion and the protection, improvement, and	Duty of care must be applied to soil conservation and

Legislation / Policy / Guideline: Custodian	Relevant Provisions	Implications for this project
of Agriculture, Water and Land Reform (MAWLR)	conservation of soil, vegetation, and water supply sources and resources, through directives declared by the Minister.	management measures must be included in the EMP.
Local Authorities Act No. 23 of 1992	To provide for the determination, for purposes of traditional government, of traditional authority councils; the establishment of such authority councils; and to define the powers, duties and functions of traditional authority councils; and to provide for incidental matters.	The Otjiwarongo town council is the responsible local Authority of the area therefore they should be consulted.
Public Health Act (No. 36 of 1919): Ministry of Health and Social Services (MHSS)	Section 119 states that “no person shall cause a nuisance or shall suffer to exist on any land or premises owned or occupied by him or of which he is in charge any nuisance or other condition liable to be injurious or dangerous to health.”	The Proponent and all its employees should ensure compliance with the provisions of these legal instruments.
Health and Safety Regulations GN 156/1997 (GG 1617): Ministry of Health and Social Services (MHSS)	Details various requirements regarding the health and safety of labourers.	

Legislation / Policy / Guideline: Custodian	Relevant Provisions	Implications for this project
Public and Environmental Health Act No. 1 of 2015: Ministry of Health and Social Services (MHSS)	The Act serves to protect the public from nuisance and states that no person shall cause a nuisance or shall suffer to exist on any land or premises owned or occupied by him or of which he is in charge any nuisance or other condition liable to be injurious or dangerous to health.	The Proponent should ensure that the project infrastructure, vehicles, equipment, and machinery are designed and operated in a way that is safe, or not injurious or dangerous to public health, and that the noise and dust emissions which could be considered a nuisance remain at acceptable levels. Public and environmental health should be preserved and remain uncompromised.
Atmospheric Pollution Prevention Ordinance (1976): Ministry of Health and Social Services (MHSS)	This ordinance provides for the prevention of air pollution and is affected by the Health Act 21 of 1988. Under this ordinance, the entire area of Namibia, apart from East Caprivi, is proclaimed as a controlled area for section 4(1) (a) of the ordinance.	The proposed project and related activities should be undertaken in such a way that they do not pollute or compromise the surrounding air quality. Mitigation measures should be put in place and implemented on-site.
Hazardous Substance Ordinance, No. 14 of 1974: Ministry of Health and	The ordinance provides for the control of toxic substances. It covers manufacture, sale, use, disposal, and dumping as well as import and export. Although the environmental aspects are not explicitly stated, the ordinance	The Proponent should handle and manage the storage and use of hazardous substances on site so that they do not harm or compromise the site environment

Legislation / Policy / Guideline: Custodian	Relevant Provisions	Implications for this project
Social Services (MHSS)	provides for the importing, storage, and handling.	
Road Traffic and Transport Act, No. 22 of 1999: Ministry of Works and Transport (Roads Authority of Namibia)	The Act provides for the establishment of the Transportation Commission of Namibia; for the control of traffic on public roads, the licensing of drivers, the registration and licensing of vehicles, the control and regulation of road transport across Namibia's borders; and for matters incidental thereto. Should the Proponent wish to undertake activities involving road transportation or access to existing roads, the relevant permits will be required.	Mitigation measures should be provided for, if the roads and traffic impact cannot be avoided, the relevant permits must be applied for.
Labour Act (No. 6 of 1992): Ministry of Labour, Industrial Relations and Employment Creation (MLIREC)	Ministry of Labour, Industrial Relations and Employment Creation is aimed at ensuring harmonious labour relations through promoting social justice, occupational health and safety, and enhanced labour market services for the benefit of all Namibians. This ministry insures the effective implementation of the Labour Act No. 6 of 1992.	The Proponent should ensure that the prospecting and exploration activities do not compromise the safety and welfare of workers.

4.2 International Policies, Principles, Standards, Treaties, and Conventions

The international policies, principles, standards, treaties, and conventions applicable to the project are listed in **Table 3** below.

Table 2: International Policies, Principles, Standards, Treaties and Convention applicable to the project

Statute	Provisions	Project Implications
Equator Principles	<p>A financial industry benchmark for determining, assessing, and managing environmental and social risk in projects (August 2013). The Equator Principles have been developed in conjunction with the International Finance Corporation (IFC), to establish an International Standard with which companies must comply to apply for approved funding by Equator Principles Financial Institutions (EPFIs). The principles apply to all new project financings globally across all sectors.</p> <p>Principle 1: Review and Categorization</p> <p>Principle 2: Environmental and Social Assessment</p> <p>Principle 3: Applicable Environmental and Social Standards</p> <p>Principle 4: Environmental and Social Management System and Equator Principles Action Plan</p> <p>Principle 5: Stakeholder Engagement</p> <p>Principle 6: Grievance Mechanism</p> <p>Principle 7: Independent Review</p>	<p>These principles are an attempt to: ‘...encourage the development of socially responsible projects, which subscribe to appropriately responsible environmental management practices with a minimum negative impact on project-affected ecosystems and community-based upliftment and empowering interactions.’</p>

	<p>Principle 8: Covenants</p> <p>Principle 9: Independent Monitoring and Reporting</p> <p>Principle 10: Reporting and Transparency</p>	
<p>The International Finance Corporation (IFC) Performance Standards</p>	<p>The International Finance Corporation’s (IFC) Sustainability Framework articulates the Corporation’s strategic commitment to sustainable development and is an integral part of the IFC’s approach to risk management. The Sustainability Framework comprises IFC’s Policy and Performance Standards on Environmental and Social Sustainability, and IFC’s Access to Information Policy. The Policy on Environmental and Social Sustainability describes IFC’s commitments, roles, and responsibilities related to environmental and social sustainability.</p> <p>As of 28 October 2018, there are ten (10) Performance Standards (Performance Standards on Environmental and Social Sustainability) that the IFC requires project Proponents to meet throughout the life of an investment. These standard requirements are briefly described below.</p> <p>Performance Standard 1: Assessment and Management of Environmental and Social Risks and Impacts</p>	<p>The Performance Standards are directed toward clients, guiding how to identify risks and impacts, and are designed to help avoid, mitigate, and manage risks and impacts as a way of doing business sustainably, including stakeholder engagement and disclosure obligations of the Client (Borrower) concerning project-level activities. In the case of its direct investments (including project and corporate finance provided through financial intermediaries), IFC requires its clients to apply the Performance Standards to manage environmental and social risks and impacts so that development opportunities are enhanced. IFC uses the</p>

	<p>Performance Standard 2: Labour and Working Conditions</p> <p>Performance Standard 3: Resource Efficient and Pollution Prevention and Management</p> <p>Performance Standard 4: Community Health and Safety</p> <p>Performance Standard 5: Land Acquisition, Restrictions on Land Use, and Involuntary Resettlement</p> <p>Performance Standard 6: Biodiversity Conservation and Sustainable Management of Living Natural Resources</p> <p>Performance Standard 7: Indigenous Peoples/Sub-Saharan African Historically Underserved Traditional Local Communities</p> <p>Performance Standard 8: Cultural Heritage</p> <p>Performance Standard 9: Financial Intermediaries (FIs)</p> <p>Performance Standard 10: Stakeholder Engagement and Information</p> <p>A full description of the IFC Standards can be obtained from http://www.worldbank.org/en/projects-operations/environmental-and-social-framework/brief/environmental-and-social-framework</p>	<p>Sustainability Framework along with other strategies, policies, and initiatives to direct the business activities of the Corporation to achieve its overall development objectives.</p>
--	--	--

	social-standards?cq_ck=1522164538151#ess1	
The United Nations Convention to Combat Desertification (UNCCD) 1992	<p>Addresses land degradation in arid regions with the purpose to contribute to the conservation and sustainable use of biodiversity and the mitigation of climate change.</p> <p>The convention's objective is to forge a global partnership to reverse and prevent desertification/land degradation and to mitigate the effects of drought in affected areas to support poverty reduction and environmental sustainability United Nations Convention.</p>	The project activities should not be such that they contribute to desertification.
Convention on Biological Diversity 1992	<p>Regulate or manage biological resources important for the conservation of biological diversity whether within or outside protected areas, to ensure their conservation and sustainable use.</p> <p>Promote the protection of ecosystems, and natural habitats, and the maintenance of viable populations of species in natural surroundings.</p>	Removal of vegetation cover and destruction of natural habitats should be avoided and where not possible minimized.
Stockholm Declaration on the Human Environment, Stockholm (1972)	It recognizes the need for: “a common outlook and common principles to inspire and guide the people of the world in the preservation and enhancement of the human environment.	Protection of natural resources and prevention of any form of pollution.

Relevant international Treaties and Protocols ratified by the Namibian Government

- Convention on International Trade and Endangered Species of Wild Fauna and Flora (CITES), 1973.
- Convention on Biological Diversity, 1992.
- World Heritage Convention, 1972.

5 ENVIRONMENTAL AND SOCIAL BASELINE

The project activities will be undertaken in specific environmental and social conditions. The understanding of these conditions helps in identifying sensitive environmental features that may need to be protected through the implementation of certain management and mitigation measures. The summary of selected physical, biological and social baseline information of the project area is provided below as per the site visit conducted by the Environmental Consultant and relevant published reports and books.

The climatic conditions of the project area are described using the Tsandi weather station data for the area obtained from the Climate Data website (2026).

5.1 Biophysical Environment

5.1.1 Climate

The proposed small-scale mining programme will be undertaken in specific environmental and social conditions. Understanding the pre-project conditions of the environment will aid in laying down background "information" of the status quo and future projections of environmental conditions after proposed works on the MCs. This also helps the EAP in identifying the sensitive environmental features that may need to be protected through the recommendations and effective implementation of mitigation measures provided.

The baseline information presented below is sourced from a variety of sources including reports of studies conducted in the Omusati Region. Further information was obtained by the Consultant during the site visit.

The climate information below is sourced from: <https://www.nearweather.com/location/omusati-na-3371206>

Climate in Omusati

Omusati region experiences a hot arid climate, characterized by low and erratic rainfall, high temperatures, and low humidity. The climate in Omusati is classified as a desert climate (BWh) according to the Köppen-Geiger climate classification system. This means that the region has hot temperatures throughout the year with very little precipitation.

Understanding the weather patterns throughout the year is essential for planning activities and making informed decisions. The following overview provides a analysis of the weather in Omusati across the different seasons.

Summer (November - February)

During the summer months in Omusati, the region experiences extremely hot and dry weather conditions. Temperatures often soar, with an average high of 35°C and can occasionally exceed 40°C. The nights provide little relief as temperatures may only drop to around 20°C. Rainfall during this period is minimal, with occasional brief thunderstorms bringing short-lived relief from the intense heat.

Autumn (March - April)

Autumn in Omusati brings slightly milder temperatures compared to the peak of summer. Daytime temperatures range from 30°C to 35°C with cooler nights. However, rainfall remains scarce, and the landscape begins to dry up as the region transitions towards the dry winter season.

Winter (May - August)

Winter in Omusati is characterized by warm days and cooler nights. Daytime temperatures range from 25°C to 30°C, making it a more comfortable time to explore the region. However, night-time temperatures can drop significantly, often falling below 10°C. The region experiences virtually no rainfall during the winter months.

Spring (September - October)

Spring in Omusati marks the beginning of the transition back to the hot and dry summer season. Temperatures gradually begin to rise, with daytime temperatures ranging from 30°C to 35°C. The landscape starts to show signs of life as the dry vegetation is rejuvenated by sporadic showers before the onset of the dry season.

5.1.2 Topography

The MCs are located in the northern part of Namibia, near the border of Angola, the Kalahari sandveld in Omusati is part of the broader Kalahari Basin, which is a low-relief, largely sandy landscape underlain by deep aeolian (wind-deposited) sands. It typically occurs away from the major river floodplains and forms gently undulating plains rather than steep or rugged terrain

The MCs are between at the elevation 1129m and 1111m, **Figure 3** below shows the topography of the project area.

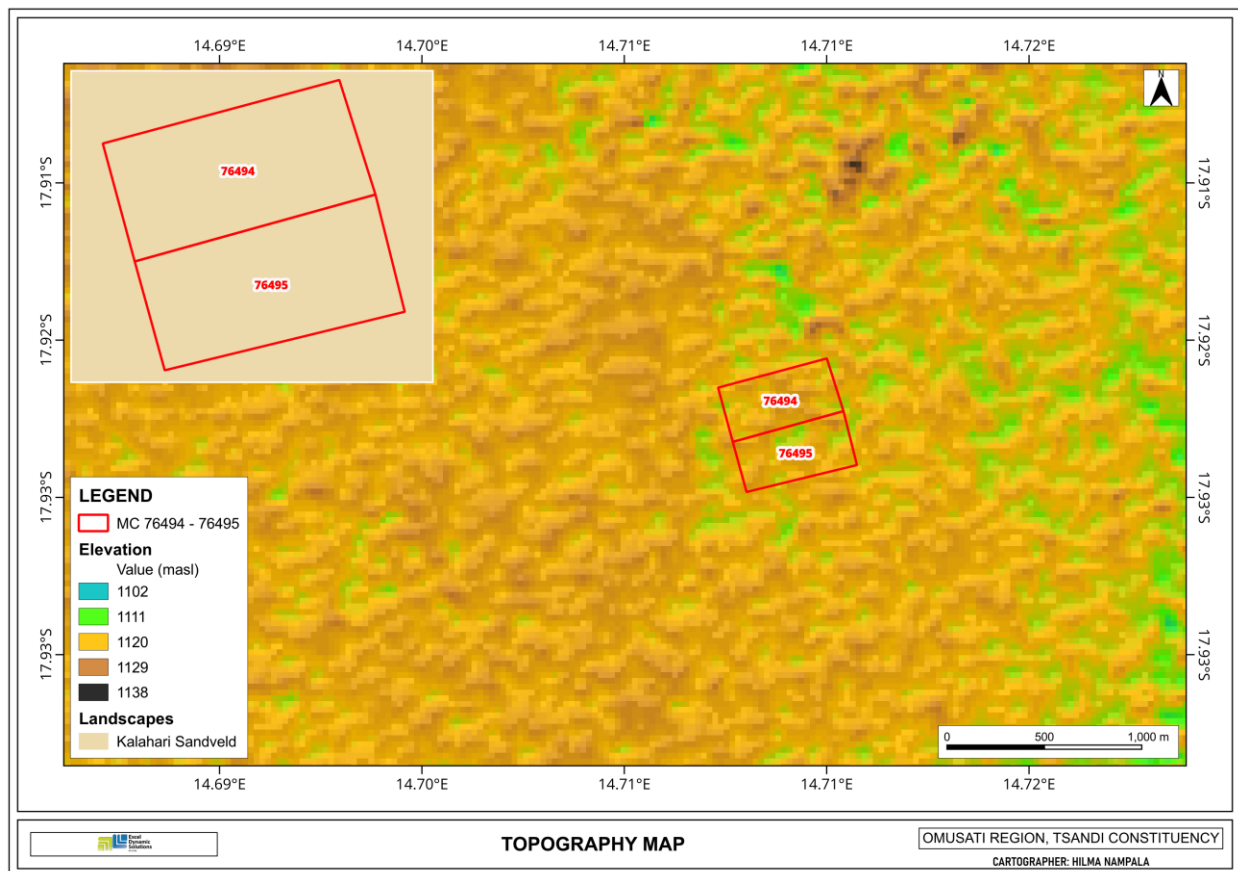


Figure 3: Topographic map of the project area

5.1.3 Geology

The Omusati Region lies on the northern margin of the Damara Orogen. North of the Damara belt, the Otavi Group and Damara Sequence represent important Neoproterozoic to early Palaeozoic sedimentary and tectonothermal units that underlie parts of northern Namibia.

Between Otsandi and Omakange, the bedrock is influenced by Damara-age basin-fill sediments and associated Otavi carbonate sequences, with varying degrees of metamorphism, faulting and folding related to the Damara orogeny.

The underlying rock types on the Mining Claims are mainly calcrete and surficial deposits as shown in **Figure 4**.

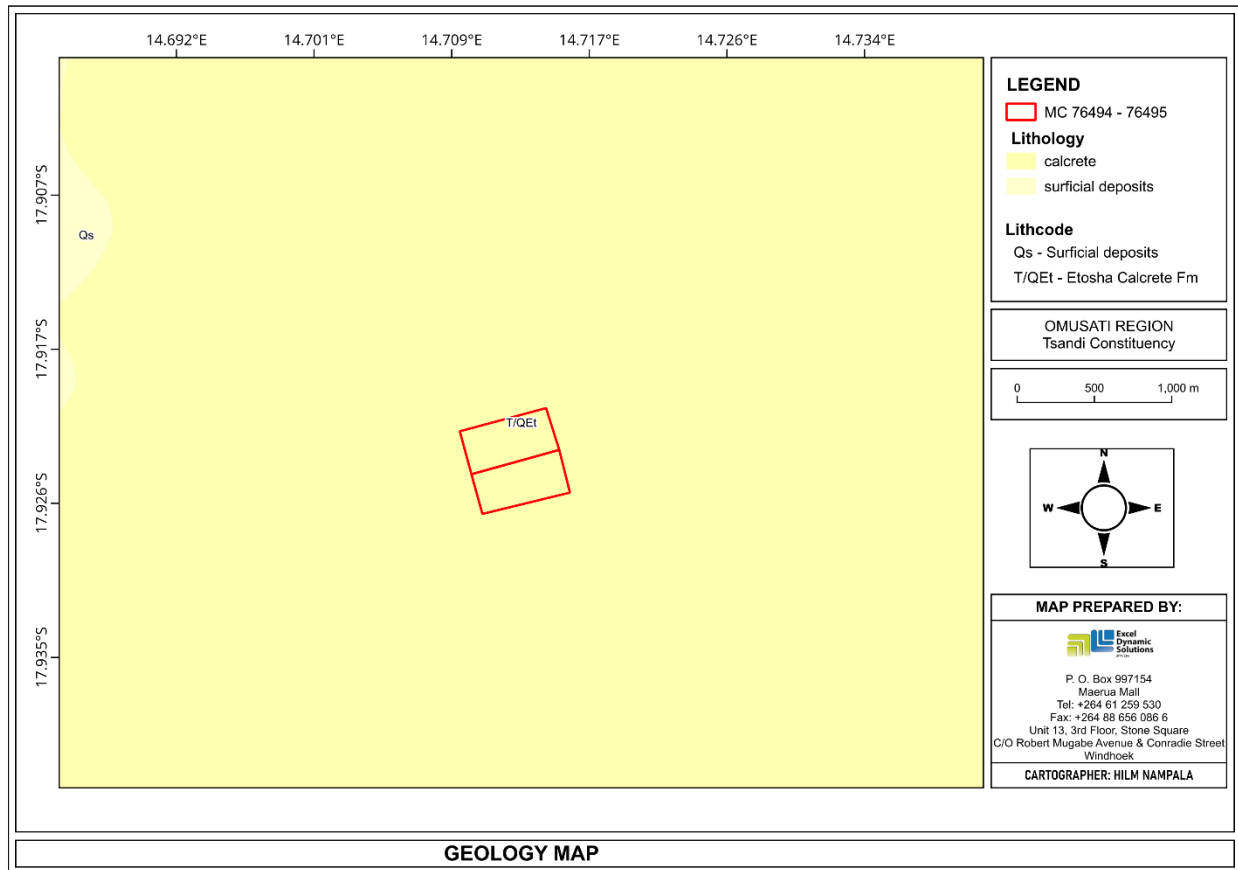


Figure 4: General geology and lithology map of the MCs.

5.1.4 Soil

The MCs are predominantly comprised of Eutric Cambisols, which show distinct differences from the original unweathered parent material in terms of their aggregate structure, color, clay content, carbonate content, and other characteristics indicating soil formation processes, as defined by the Food and Agriculture Organization (FAO).

Combisols are a WRB soil reference group describing soils with mixed properties — typically shallow to moderately deep soils with variable texture and structure within short distances. The

prefix "Eutric" indicates these soils are relatively base-rich (higher pH and exchangeable bases such as calcium and magnesium), generally more fertile than acidic soils in the same climate

Figure 5 below is a map of the soil type on the MCs and **Figure 6** shows the soil type observed on the MCs.

It is notable that during the operational phase of the project, soil sampling may be conducted. *Therefore, the Soil Conservation Act (No 76 of 1969) should be taken into account to ensure that soils are conserved in a way that does not promote soil erosion.* (Refer to the EMP).

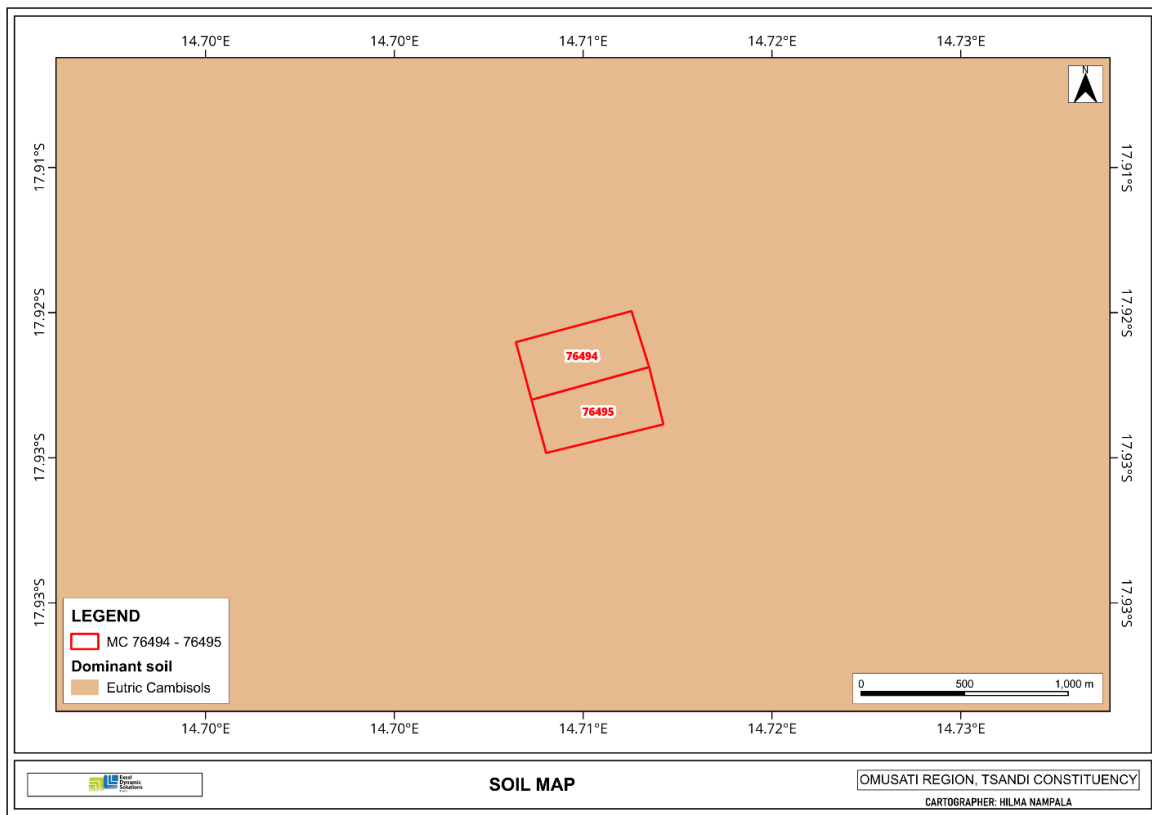


Figure 5: Dominant soil type on the MCs



Figure 6: Observed soil type

5.1.5 Water Resources: Groundwater and Surface Water

The project area lies over rock bodies with groundwater potential. Groundwater within the project area is most likely to flow along porous aquifers and due to the nature of the rock bodies, the MCs area is considered to have moderate vulnerability prone to groundwater pollution. Some boreholes can be sited near the mining claims. **Figure 7** shows the groundwater map of the project area.

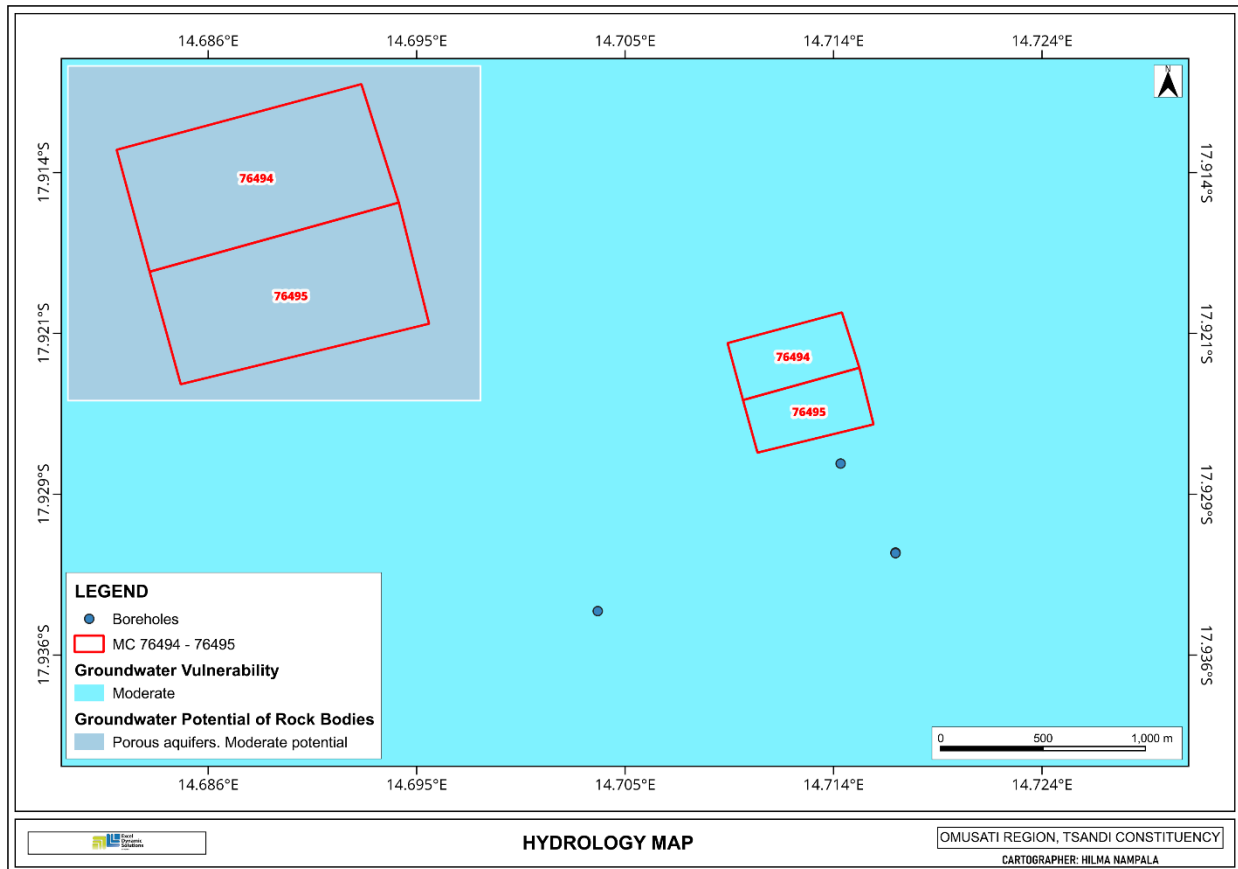


Figure 7: Hydrology map for the MCs

5.1.6 Flora and Fauna

5.1.6.1 Flora

The Western Kalahari vegetation in Omusati Region is part of the larger Kalahari sandveld mosaic. It is characterised by open, semi-arid savanna on deep, aeolian sands, with vegetation adapted to low and seasonal rainfall, high evaporation and sandy soils with low nutrient and water-holding capacity.

Trees and shrubs: *Acacia* (*Vachellia*) species such as *Vachellia erioloba* (camelthorn) and *V. tortilis* (umbrella thorn) can be found in the area. *Colophospermum mopane* (mopane), *Combretum collinum*, *Terminalia* and *Ziziphus* species in moister or calcareous microsites, Makalani palm trees, *Commiphora africana*, several drought-tolerant shrubs and *Eragrostis* grasses are known to be found in the region. **Figure 8** shows the vegetation map of the MCs and **(Figure 9)** shows the observed vegetation on the MCs.

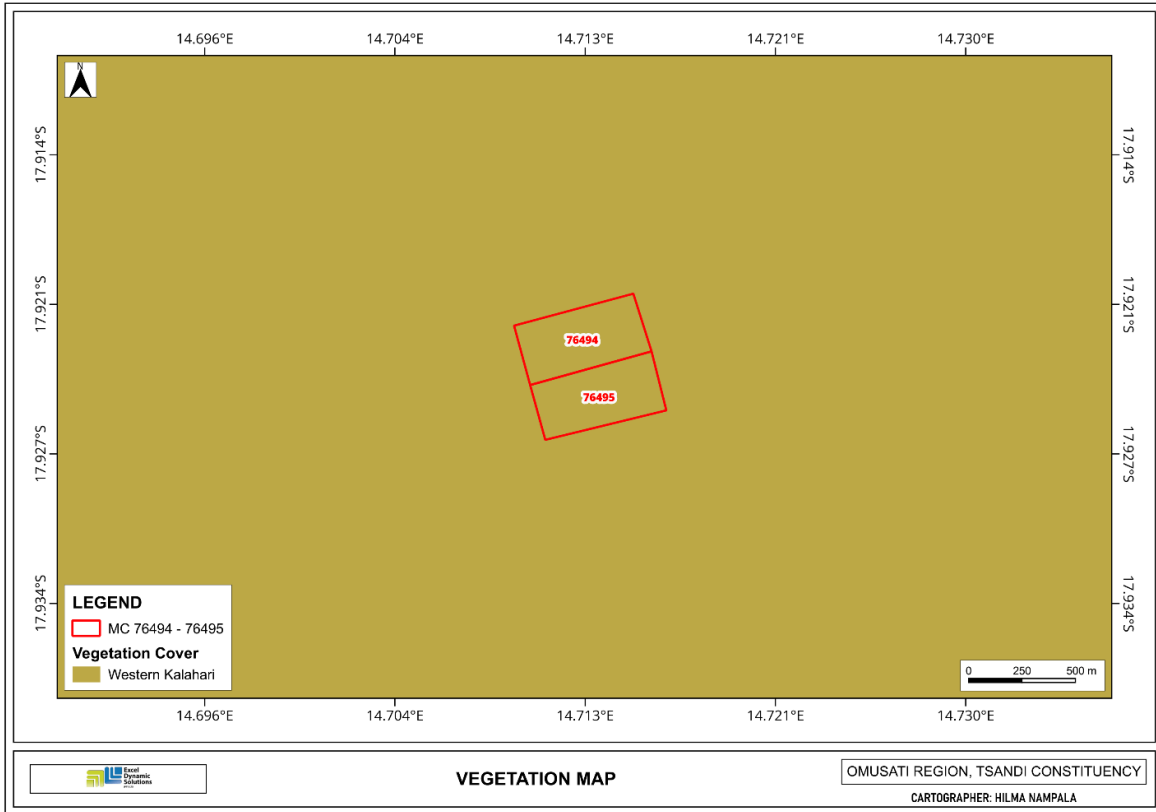


Figure 8: Vegetation map



Figure 9: Vegetation observed on the MCs

5.1.6.2 Fauna

Omusati Region is mainly dominated by livestock/domestic animal such as goats, sheep, cattle, donkeys, chicken and ducks usually for farming. Wildlife can also be found in the Ogongo Game Reserve, some such as: Springbok (*Antidorcas marsupialis*), gemsbok (*Oryx gazelle*), zebra (*Equus quagga*), red hartebeest (*Alcelaphus buselaphus*), giraffe Giraffa (*Camelopardalis*), aardvark (*Orycteropus afer*), several scrub hares (*Lepus saxatilis*), yellow mongooses (*Cynictis penicillata*), striped polecats (*Ictonyx striatus*), black-backed jackals (*Canis mesomelas*).

5.2 Heritage and Archaeology

5.2.1 Local Level and Archaeological Findings

There are no nationally recognized archaeological sites recorded within the MCs. There might be a possibility that unrecorded or undiscovered archaeological features or artifacts may be discovered during the mining phase. In the case where an archaeological discovery is made on site during exploration works, the procedures outlined in the National Heritage Act, No. 27 of 2004 are to be followed. Section 55 (4) of the National Heritage Act, No. 27 of 2004, requires that any archaeological or paleontological object or meteorite discovered is reported to the National Heritage Council as soon as practicable.

5.3 Surrounding Land Uses

The MCs Fall within communal land and the Uukwaluudhi Conservancy as shown in **Figure 10**). The Proponent is required to secure a signed agreement from the affected landowners to gain access to the areas of interest for prospecting and exploration investigations as per Section 52 of the Minerals (Prospecting and Mining) Act No. 33 of 1992 and Section 2.2.3 of the Minerals Policy of Namibia.

1. Section 52 (1) The holder of the mineral license shall not exercise any rights conferred upon such holder by this Act or under any terms and conditions of such mineral license –
 - (a) In, on, or under any and until such holder has agreed in writing with the owner of such land containing terms and conditions relating to the payment of compensation, or the owner of such land has in writing waived any right to such compensation and has submitted a copy of such agreement or waiver to the Commissioner.

Section 2.2.3 of the Draft Minerals Policy of Namibia states that the License Holder and/or mineral explorers currently have to negotiate a contract with landowners to gain access for mining purposes.

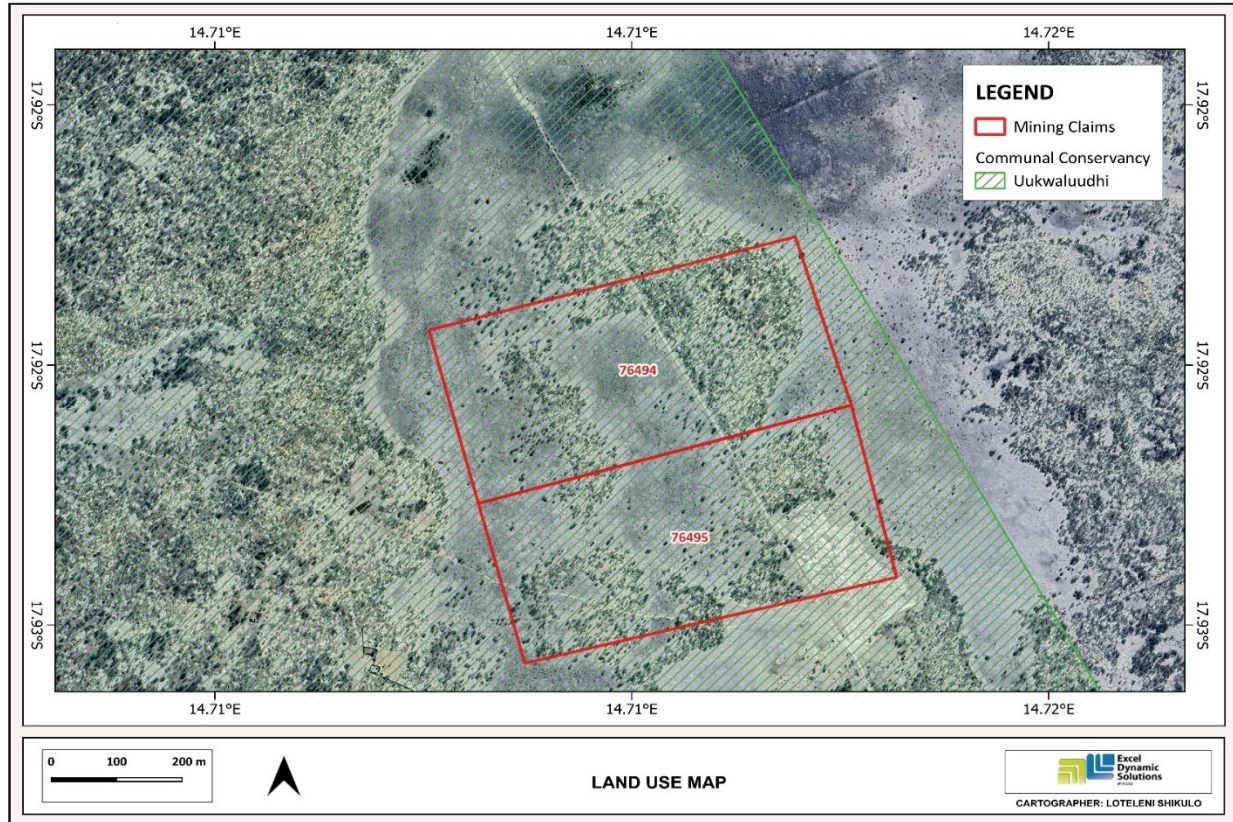


Figure 10: Land use map

5.4 Socio-Economic conditions

Omusati Region

Omusati is a predominantly rural and agriculture-based region. The regional profile describes it as one of Namibia’s most populated northern regions, with about 90% of residents living in rural areas. Settlements are widely dispersed, household sizes are relatively large, and livelihoods depend heavily on land, water, livestock, and family farming systems

Livelihoods

The economy of Omusati is still anchored in subsistence and small-scale agriculture. Many households depend on crop production and livestock keeping for food and income, while others

combine farming with pensions, wage employment, petty trade, and informal activities. The regional profile identifies farming as the largest single income source, followed by wages/salaries and pensions

Agriculture and food security

Agriculture is the backbone of household survival in Omusati. The main crops include mahangu (pearl millet), maize, sorghum, beans, groundnuts, pumpkins, bambara nuts, and indigenous vegetables. Livestock rearing includes cattle, goats, sheep, pigs, donkeys, and poultry. The region also has irrigation potential through schemes such as Etunda, which support more commercial production, but most families still depend on rain-fed farming,

6 PUBLIC CONSULTATION PROCESS

Public consultation is an important component of an Environmental Assessment (EA) process. It provides potential Interested and Affected Parties (I&APs) with an opportunity to comment on and raise any issues relevant to the project for consideration as part of the assessment process, thus assisting the Environmental Assessment Practitioner (EAP) in identifying all potential impacts and what extent further investigations are necessary. Public consultation can also aid in the process of identifying possible mitigation measures. Public consultation for this scoping study has been done following the EMA and its EIA Regulations.

6.1 Pre-identified and Registered Interested and Affected Parties (I&APs)

Relevant and applicable national, regional, and local authorities and other interested members of the public were identified. Pre-identified I&APs were contacted directly, while other parties who contacted the Consultant after project advertisement notices in the newspapers, were registered as I&APs upon their request. Newspaper advertisements of the proposed exploration activities were placed in two widely read national newspapers in the region (New Era Newspaper and The Namibian Newspaper). The project advertisement/announcement ran for two consecutive weeks inviting members of the public to register as I&APs and submit their comments. The summary of pre-identified and registered I&APs is listed in **Table 4** below and the complete list of I&APs is provided in **Appendix D**.

Table 4: Summary of Interested and Affected Parties (I&APs)

National (Ministries and State-Owned Enterprises)
Ministry of Environment, Forestry and Tourism
Ministry of Mines and Energy
Ministry of Health and Social Services
Regional, Local, and Traditional Authorities
Omusati Regional Council
Outapi Town Council
Uukwaluudhi Traditional Authority
General Public
Landowners /Interested members of the public

6.2 Communication with I&APs

Regulation 21 of the EIA Regulations details the steps to be taken during a public consultation process and these have been used in guiding this process. Communication with I&APs concerning the proposed development was facilitated through the following means and in this order:

- A Background Information Document (BID) containing brief information about the proposed exploration works was compiled and emailed to registered and Identified Interested and Affected Parties (I&APs);
- Project Environmental Assessment notices were published in the New Era Newspaper (**14 November 2025 and 21 November 2025**) and The Namibian Newspaper (**17 November 2025 and 24 November 2025**),
briefly explaining the activity and its locality and inviting members of the public to register as I&APs and submit their comments/concerns.
- A public notice was placed at the Tsandi Village Council and Uukwaluudhi Traditional Authority Offices (**Figure 11**) to inform members of the public about the EIA process.
- Multiple public meetings were scheduled and held at Tsandi Village Council, Uukwaluudhi Traditional Authority Offices and on site as shown in **Figure 12**.

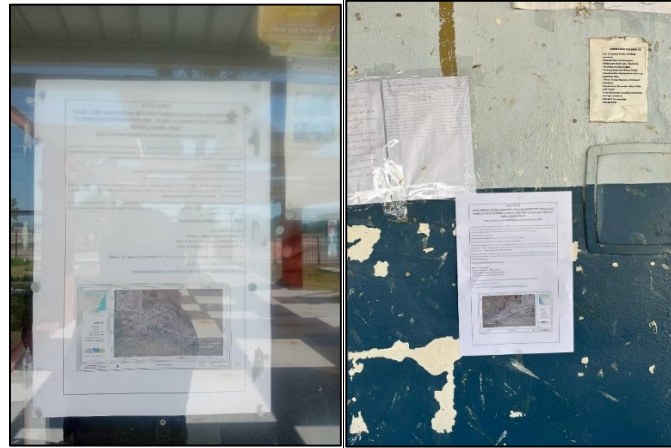


Figure 11: Public notice placed at Otsandi Village Council and Uukwaluudhi TA offices



Figure 12: Public Consultation meetings at Tsandi Village council (A), Uukwaluudhi TA offices (B and C) and at the site (D).

Issues raised by I&APs have been recorded and incorporated in the environmental report and EMP. The summarized issues raised during the public meeting are presented in **Table 5** below. The issues raised and responses by EDS are attached under **Appendix G**.

Table 5: Summary of main issues raised, and comments received during public meeting engagements

Issue	Concern
Project benefitiation	Will the community benefit from this project?

7 IMPACT IDENTIFICATION, ASSESSMENT AND MITIGATION MEASURES

7.1 Impact Identification

Proposed developments/activities are usually associated with different potential positive and/or negative impacts. For an environmental assessment, the focus is placed mainly on the negative impacts. This is done to ensure that these impacts are addressed by providing adequate mitigation measures such that an impact's significance is brought under control while maximizing the positive impacts of the development. The potential positive and negative impacts that have been identified from the prospecting activities are listed as follows:

Positive impacts:

- Creation of jobs for the locals (primary, secondary, and tertiary employment).
- Producing a trained workforce and small businesses that can service communities and may initiate related businesses.
- Boosting local economic growth and regional economic development.
- Open up other investment opportunities and infrastructure-related development benefits.

Negative impacts:

- Disturbance to grazing areas
- Land degradation and Biodiversity Loss
- Generation of dust
- Water Resources Use
- Soil & Water Resources Pollution
- Waste Generation
- Occupational Health & Safety risks
- Vehicular Traffic Use & Safety
- Noise & Vibrations
- Disturbance to Archaeological & Heritage Resources
- Impacts on local Roads
- Social Nuisance: local property intrusion & disturbance
- Social Nuisance: Job seeking & differing Norms, Culture & values
- Impacts associated with closure and decommissioning of exploration works

7.2 Impact Assessment Methodology

The Environmental Assessment process primarily ensures that potential impacts that may occur from project activity are identified and addressed with environmentally cautious approaches and legal compliance. The impact assessment method used for this project is following Namibia's Environmental Management Act (No. 7 of 2007) and its Regulations of 2012, as well as the International Finance Corporation (IFC) Performance Standards.

The identified impacts were assessed in terms of scale/extent (spatial scale), duration (temporal scale), magnitude (severity), and probability (likelihood of occurring), as presented in **Table 6**, **Table 7**, **Table 8**, and **Table 9**, respectively.

To enable a scientific approach to the determination of the environmental significance, a numerical value is linked to each rating scale. This methodology ensures uniformity and that potential impacts can be addressed in a standard manner so that a wide range of impacts are comparable. It is assumed that an assessment of the significance of a potential impact is a good indicator of the risk associated with such an impact. The following process will be applied to each potential impact:

- Provision of a brief explanation of the impact.
- Assessment of the pre-mitigation significance of the impact; and
- Description of recommended mitigation measures.

The recommended mitigation measures prescribed for each of the potential impacts contribute towards the attainment of environmentally sustainable operational conditions of the project for various features of the biophysical and social environment. The following criteria were applied in this impact assessment:

7.2.1 Extent (spatial scale)

The extent is an indication of the physical and spatial scale of the impact. **Table 6** shows the rating of impact in terms of the extent of spatial scale.

Table 6: Extent or spatial impact rating

Low (1)	Low/Medium (2)	Medium (3)	Medium/High (4)	High (5)
The impact is localized within the site boundary: Site only	The impact is beyond the site boundary: Local	Impacts felt within adjacent biophysical and social environments: Regional	Impact widespread far beyond site boundary: Regional	The impact extends National or international boundaries

7.2.2 Duration

Duration refers to the timeframe over which the impact is expected to occur, measured concerning the lifetime of the project. **Table 7** shows the rating of impact in terms of duration.

Table 7:Duration impact rating

Low (1)	Low/Medium (2)	Medium (3)	Medium/High (4)	High (5)
Immediate mitigating measures, immediate progress	The impact is quickly reversible, and short-term impacts (0-5 years)	Reversible over time; medium-term (5-15 years)	Impact is long-term	Long-term; beyond closure; permanent; irreplaceable or irretrievable commitment of resources

7.2.3 Intensity, Magnitude/severity

Intensity refers to the degree or magnitude to which the impact alters the functioning of an element of the environment. The magnitude of alteration can either be positive or negative. These ratings were also taken into consideration during the assessment of severity. **Table 8** shows the rating of impact in terms of intensity, magnitude, or severity.

Table 8:Intensity, magnitude, or severity impact rating

Type of criteria	Negative				
	H- (10)	M/H- (8)	M- (6)	M/L- (4)	L- (2)
Qualitative	Very high deterioration, high quantity of deaths,	Substantial deterioration, death, illness or injury, loss of	Moderate deterioration, discomfort, partial loss of habitat/biodiversit	Low deterioration, slight noticeable alteration in	Minor deterioration, nuisance or irritation, minor change in species/habitat/diversity or resource, no or

Type of criteria	Negative				
	H- (10)	M/H- (8)	M- (6)	M/L- (4)	L- (2)
	injury or illness / total loss of habitat, total alteration of ecological processes, extinction of rare species	habitat/diversity or resource, severe alteration or disturbance of important processes	very or resource, moderate alteration	habitat and biodiversity. Little loss in species numbers	very little quality deterioration.

7.2.4 Probability of occurrence

Probability describes the likelihood of the impacts occurring. This determination is based on previous experience with similar projects and/or based on professional judgment. **Table 9** shows impact rating in terms of probability of occurrence.

Table 9:Probability of occurrence impact rating

Low (1)	Medium/Low (2)	Medium (3)	Medium/High (4)	High (5)
Improbable; low likelihood; seldom. No known risk or vulnerability to natural or induced hazards.	Likely to occur from time to time. Low risk or vulnerability to natural or induced hazards	A possible, distinct possibility, frequent. Low to medium risk or vulnerability to natural or induced hazards.	Probable if mitigating measures are not implemented. Medium risk of vulnerability to natural or induced hazards.	Definite (regardless of preventative measures), highly likely, and continuous. High risk or vulnerability to natural or induced hazards.

7.2.5 Significance

Impact significance is determined through a synthesis of the above impact characteristics. The significance of the impact “without mitigation” is the main determinant of the nature and degree of mitigation required. As stated in the introduction to this section, for this assessment, the significance of the impact without prescribed mitigation actions is measured.

Once the above factors (**Table 6**, **Table 7**, **Table 8**, and **Table 9**) have been ranked for each potential impact, the impact significance of each is assessed using the following formula:

SIGNIFICANCE POINTS (SP) = (MAGNITUDE + DURATION + SCALE) X PROBABILITY

The maximum value per potential impact is 100 significance points (SP). Potential impacts were rated as high, moderate, or low significance, based on the following significance rating scale (**Table 10**).

Table 10:Significance rating scale

Significance	Environmental Significance Points	Colour Code
High (positive)	>60	H
Medium (positive)	30 to 60	M
Low (positive)	1 to 30	L
Neutral	0	N
Low (negative)	-1 to -30	L
Medium (negative)	-30 to -60	M
High (negative)	-60<	H

Positive (+) – Beneficial impact

Negative (-) – Deleterious/ adverse+ Impact

Neutral – Impacts are neither beneficial nor adverse

For an impact with a significance rating of high (-ve), mitigation measures are recommended to reduce the impact to a medium (-ve) or low (-ve) significance rating, provided that the impact with a medium significance rating can be sufficiently controlled with the recommended mitigation measures. To maintain a low or medium significance rating, monitoring is recommended for a period to enable the confirmation of the significance of the impact as low or medium and under control.

The assessment of the exploration phases is done for pre-mitigation and post-mitigation.

The risk/impact assessment is driven by three factors:

Source: The cause or source of the contamination.

Pathway: The route taken by the source to reach a given receptor

Receptor: A person, animal, plant, ecosystem, property, or a controlled water source. If contamination is to cause harm or impact, it must reach a receptor.

A pollutant linkage occurs when a source, pathway, and receptor exist together. Mitigation measures aim firstly, to avoid risk and if the risk cannot be avoided, mitigation measures to minimize the impact are recommended. Once mitigation measures have been applied, the identified risk would reduce to lower significance (Booth, 2011).

This assessment focuses on the three project phases namely, prospecting, exploration (and possible analysis), and decommissioning. The potential negative impacts stemming from the proposed activities of the MCs are described and assessed and mitigation measures are provided thereof. Further mitigation measures in a form of management action plans are provided in the Draft Environmental Management Plan.

7.3 Assessment of Potential Negative Impacts

The main potential negative impacts associated with the operation and maintenance phase are identified and assessed below:

7.3.1 Disturbance to grazing areas

The MCs are overlying communal land that have livestock. Small-scale mining activities such as site clearing, trenching, and drilling can potentially lead to the disturbance of grazing land. This will potentially affect the grazing land available to livestock, and since the livestock greatly depends on the little available flora, their livelihood will be impacted.

The effect of exploration and mining work on the land (when done over a wider spatial extent), if not mitigated, may hinder grazing areas. Under the status quo, the impact can consider being of a medium significance rating. With the implementation of appropriate mitigation measures, the rating will be reduced to a lower significance. The impact is assessed in **Table 11** below.

Table 11: Assessment of the impacts of exploration on grazing areas

Mitigation Status	Extent	Duration	Intensity	Probability	Significance
Pre mitigation	M: -4	M: -3	M: -4	M/H: 5	M: -55

Post mitigation	L/M: -2	L/M: -2	L/M: -4	L/M: 3	L: -24
------------------------	---------	---------	---------	--------	---------------

7.3.2 Land Degradation and Loss of Biodiversity

Fauna: The trenching, pitting, and drilling activities carried out during mining would result in land degradation, leading to habitat loss for a diversity of flora and fauna ranging from microorganisms to large animals and trees. Endemic species are most at risk since even the slightest disruption in their habitat can result in extinction.

The presence and movement of the exploration and mining workforce and operation of project equipment and heavy vehicles would disturb livestock and wildlife present. The proposed activities may also carry the risk of the potential illegal hunting of local wildlife. This could lead to the reduction of specific faunal species, which may limit tourism (sightseeing and safari) activity in the area.

Additionally, if the exploration and mining sites are not rehabilitated, they could pose a high risk of injuries to animals by falling into holes and pits.

Flora: Direct impact of exploration and mining works on flora will mainly occur through clearing for exploration access routes and associated infrastructure. The dust emissions from drilling may also affect surrounding vegetation through the fall of dust, if excessive. Some loss of vegetation is an inevitable consequence of the development. However, given a moderate abundance of vegetations and site-specific areas of mining on the MCs, the impact will be localized, therefore manageable.

Under the status, the impact can be of a medium significance rating. With the implementation of appropriate mitigation measures, the rating will be reduced to a low significance rating. The impact is assessed in **Table 12** below.

Table 12: Assessment of the impacts of exploration on biodiversity

Mitigation Status	Extent	Duration	Intensity	Probability	Significance
Pre mitigation	M: -4	M: -4	M: -6	M/H: 4	M: -56
Post mitigation	L/M: -3	L/M: -3	L/M: -4	L/M: 3	L: -30

7.3.3 Generation of Dust (Air Quality)

Dust emanating from site access routes when transporting equipment and supply to and from the site may compromise the air quality in the area. Vehicular movements from heavy vehicles such as trucks would potentially create dust, even if it is not anticipated to be low. Additionally, activities carried out as part of the exploration works such as drilling would contribute to the dust levels in the air. The medium significance of this impact can be reduced to a low significance rating by properly implementing mitigation measures. The impact is assessed in **Table 13** below.

Table 13: Assessment of the impacts of exploration on air quality

Mitigation Status	Extent	Duration	Intensity	Probability	Significance
Pre mitigation	M: -3	M: -3	M/L: -4	M/H: 4	M: -40
Post mitigation	L - 2	L - 2	L - 2	L - 1	L - 6

7.3.4 Water Resources Use

Water resources are impacted by project developments/activities in two ways - through pollution (water quality) or over-abstraction (water quantity) or at times both.

The abstraction of more water than can be replenished from low groundwater potential areas would negatively affect the local communities (communal and livestock) that depend on the same low potential groundwater resource (aquifer).

The impact of the project activities on the resources would be dependent on the water volumes required by each project activity. Small-scale mining activities does not use a lot of water, mainly for drilling. However, this depends on the type of drilling methods employed (diamond drilling is more water-consuming compared to drilling methods such as reverse circulation for instance) and the type of mineral being explored.

The drilling method to be employed for this project's exploration activities is Reverse Circulation. Given the low to medium groundwater potential of some project site areas, the Proponent may consider carting some of the water volumes from outside the area and stored in industry-standard water reservoirs/tanks on site. The exact amounts of water required for proposed operations would be dependent on the duration of the exploration works and the number of exploration boreholes required to make a reliable interpretation of the commodities explored. The exploration period is temporally limited, therefore, the impact will only last for the duration of the exploration activities, and ceases upon their completion.

Without the implementation of any mitigation measures, the impact can be rated as medium, but upon effective implementation of the recommended measures, the impact significance would be reduced to low as presented in **Table 14** below.

Table 13: Assessment of the project impact on water resource use and availability

Mitigation Status	Extent	Duration	Intensity	Probability	Significance
Pre mitigation	M - 3	M/H - 3	L/M - 4	M/H - 4	M - 40
Post mitigation	L/M - 1	L/M - 1	L - 2	L/M - 3	L - 12

7.3.5 Soil and Water Resources Pollution

The proposed exploration activities are associated with a variety of potential pollution sources (i.e., lubricants, fuel, and wastewater) that may contaminate/pollute soils, and eventually, surface and groundwater. The anticipated potential source of pollution to water resources from the project activities would be hydrocarbons (oil) from project vehicles, machinery, and equipment as well as potential wastewater/effluent from exploration-related activities.

The spills (depending on volumes spilled on the soils) from machinery, vehicles, and equipment could infiltrate into the ground and pollute the fractured or faulted aquifers on site, and with time reach further groundwater systems in the area. However, it should be noted that the scale and extent/footprint of the activities where potential sources of pollution will be handled is relatively small. Therefore, the impact will be moderately low.

Pre-implementation of any mitigation measures, the impact significance is medium to high and upon implementation, the significance will be reduced to moderate. The impact is assessed in **Table 15** below.

Table 15: Assessment of the project impact on soils and water resources (pollution)

Mitigation Status	Extent	Duration	Intensity	Probability	Significance
Pre mitigation	M - 5	M/L - 3	M/L - 3	M - 4	M - 44
Post mitigation	L - 3	M - 3	L - 3	L/M - 3	L - 27

7.3.6 Waste Generation

During the small-scale mining program, domestic and general waste is produced on-site. If the generated waste is not disposed of responsibly, land pollution may occur on the MCs or around the sites. The MCs are in an area of moderate sensitivity to pollution. Improper handling, storage, and disposal of hydrocarbon products and hazardous materials at the site may lead to soil and groundwater contamination, in case of spills and leakages. Therefore, the exploration program needs to have appropriate waste management for the site. To prevent these issues, any hazardous waste that may have an impact on animals, vegetation, water resources, and the general environment should be handled cautiously. Without any mitigation measures, the general impact of waste generation has a medium significance. The impact will reduce to low significance, upon implementing the mitigation measures. The assessment of this impact is given in **Table 16** below.

Table 16: Assessment of waste generation impact

Mitigation Status	Extent	Duration	Intensity	Probability	Significance
Pre mitigation	L/M - 2	L/M - 2	M - 6	M - 5	M - 50
Post mitigation	L - 1	L - 1	L - 2	L/M - 2	L - 8

7.3.7 Occupational Health and Safety Risks

Project personnel (workers) involved in the exploration activities may be exposed to health and safety risks. These may result from accidental injury, owing to either minor (i.e., superficial physical injury) or major (i.e., involving heavy machinery or vehicles) accidents. The site safety of all personnel is the Proponent's responsibility and should be adhered to as per the requirements of the Labour Act (No. 11 of 2007) and the Public Health Act (No. 36 of 1919). The heavy vehicle, equipment, and fuel storage area should be properly secured to prevent any harm or injury to the project workers or local animals.

The use of heavy equipment, especially during drilling, and the presence of hydrocarbons on sites may result in accidental fire outbreaks, which could pose a safety risk to the project personnel, equipment, and vehicles. It may also lead to widespread veld fires if an outbreak is not contained and if machinery and equipment are not properly stored, the safety risk may be a concern for project workers and residents.

The impact is probable and has a medium significance rating. However, with adequate mitigation measures, the impact rating will be reduced to low. This impact is assessed in **Table 17** below and mitigation measures are provided.

Table 17: Assessment of the impacts of exploration on health and safety

Mitigation Status	Extent	Duration	Intensity	Probability	Significance
Pre mitigation	M - 3	M/L - 2	M - 6	M/H - 4	M - 44
Post mitigation	L/M - 2	L/M - 2	L - 2	L/M - 2	L - 12

7.3.8 Vehicular Traffic Use and Safety

The MC is accessible via the M122 and D3689 roads, Omusati Region. These are some of the main transportation routes for all vehicular movement in the area and provide access to the MCs and connect the project area to other towns. Traffic volume will therefore increase on these district roads during exploration as the project would need delivery of supplies and services on site.

Depending on the project needs, trucks, medium-sized vehicles, and small vehicles will frequent the area to and from exploration sites on the MCs. This would potentially increase slow-moving heavy vehicular traffic along these roads and add additional pressure on the roads. However, transportation of materials and equipment is expected to occur on a limited schedule and only for the duration of the project. Therefore, the risk is anticipated to be short-term, not frequent, and therefore of medium significance. Before mitigation, the impact can be rated medium and with the implementation of mitigation measures, the significance will be low as assessed in **Table 18** below.

Table 4: Assessment of the impacts of exploration on-road use (vehicular traffic)

Mitigation Status	Extent	Duration	Intensity	Probability	Significance
Pre mitigation	M - 4	M/H - 3	L/M - 4	M/H - 5	M - 55
Post mitigation	L/M - 2	L/M - 2	L - 2	L/M - 2	L - 12

7.3.9 Noise and vibrations

Small-scale mining work (especially drilling) may be a nuisance to surrounding communities due to the noise produced by the activity. Excess noise and vibrations can be a health risk to workers on site. The exploration equipment used for drilling on site is of medium size and the noise level is bound to be limited to the site only, therefore, the impact likelihood is minimal. Without any mitigation, the impact is rated as of medium significance. To change the impact significance from the pre-mitigation significance to a low rating, mitigation measures should be implemented. This impact is assessed in **Table 19** below.

Table 19: Assessment of the impacts of noise and vibrations from exploration

Mitigation Status	Extent	Duration	Intensity	Probability	Significance
Pre mitigation	L/M - 2	L/M - 2	M - 6	M/H - 3	M - 30
Post mitigation	L - 1	L/M - 2	L - 2	L/M - 2	L - 10

7.3.10 Disturbance to Archaeological and Heritage Resources

The Omusati Region contains archeological/cultural significant sites, and there is a possibility of unveiling/discovering new archeological and/or cultural materials in the proposed project area. If such Materials are found, the areas must be mapped out and coordinates taken to establish “No-Go-Areas”, due to their sensitivity and then documented. They may be protected either by fencing them off or demarcation for preservation purposes, or excluding them from any development i.e., no exploration activities should be conducted near these recorded areas through the establishment of buffer zones.

This impact can be rated as medium significance if there are no mitigation measures in place. Upon implementation of the necessary measures, the impact significance will be reduced to a lower rating. The impact is assessed in **Table 20**.

Table 20: Assessment of the impacts of exploration on archaeological & heritage resources

Mitigation Status	Extent	Duration	Intensity	Probability	Significance
Pre mitigation	M - 3	M/H - 3	M - 4	M/H - 4	M - 40
Post mitigation	L/M - 2	L/M - 2	L - 2	L/M - 2	L - 12

7.3.11 Impact on Local Roads/Routes

Mining projects are usually associated with the movements of heavy trucks and equipment or machinery that use local roads. Heavy vehicles traveling on local roads exert pressure on the roads and may make the roads difficult to use. This will be a concern if maintenance and care is not taken during the exploration phase. The impact would be short-term (during exploration only) and therefore, manageable.

Without any management and or mitigation measures, the impact can be rated as medium and to reduce this rating to low, the measures will need to be effectively implemented. The assessment of this impact is presented in **Table 21**.

Table 21: Assessment of exploration of local services (roads and water)

Mitigation Status	Extent	Duration	Intensity	Probability	Significance
Pre mitigation	M/H - 4	M - 3	M - 6	M - 3	M - 39
Post mitigation	L - 1	L - 1	M/L - 4	M/L -2	L - 12

7.3.12 Social Nuisance: Local Property intrusion and Disturbance/Damage

The presence of some non-resident workers may lead to social annoyance to the local community. This could particularly be a concern if they enter or damage local private property. The private properties of the locals may include houses, fences, vegetation, livestock, wildlife, or any properties of economic or cultural value to land users. The damage or disturbance to properties may not only be private but local public properties. The unpermitted and unauthorized entry to private property may cause crashes between the affected property (land) owners and the Proponent.

The impact is rated as of medium significance. However, upon mitigation (post-mitigation), the significance will change from a medium to a low rating. The impact is assessed below (**Table 22**).

Table 22: Assessment of the social impact of community property damage or disturbance

Mitigation Status	Extent	Duration	Intensity	Probability	Significance
Pre mitigation	M - 2	M - 3	M - 4	M/H - 3	M - 27
Post mitigation	L - 1	L - 1	M/L - 4	M/L -2	L - 12

7.4 Cumulative Impacts Associated with Proposed Exploration

According to the International Finance Corporation (2013), cumulative impacts are defined as “impacts that result from the successive, incremental, and/or combined effects of an action, project, or activity (collectively referred to in this document as “developments”) when added to other existing, planned, and/or reasonably anticipated future impacts”.

Like many other exploration projects, some cumulative impacts to which the proposed project and associated activities potentially contribute, are the:

- **Impact on road infrastructure:** The proposed exploration activity contributes cumulatively to various activities such as farming activities and traveling associated with tourism and local daily routines. The contribution of the proposed project to this cumulative impact is however not considered significant, given the short duration, and spatial extent of the intended mineral exploration activities.
- **Use of water:** While the contribution of this project will not be significant, mitigation measures to reduce water consumption during exploration are essential and should be put in place.

8 RECOMMENDATIONS AND CONCLUSION

8.1 Recommendations

The potential positive and negative impacts of the proposed small-scale mining activities on MCs 76494-76495 were identified and assessed and appropriate management and mitigation measures (to negative impacts) were made thereof for implementation by the Proponent, their contractors, and project-related employees.

Mitigation measures for identified issues have been provided in the Environmental Management Plan, for the Proponent to avoid and/or minimize their significant impacts on the environmental and social components. Most of the potential impacts were found to be of medium-rating significance. With effective implementation of the recommended management and mitigation measures, a reduced rating in the significance of adverse impacts is expected from Medium to Low. To maintain the desirable rating, the implementation of management and mitigation measures should be monitored by the Proponent directly, or their Environmental Control Officer (ECO). The monitoring of implementation will not only be done to maintain a low rating but also to ensure that all potential impacts identified in this study and other impacts that might arise during implementation are properly identified in time and addressed right away.

The Environmental Consultant is confident that the potential negative impacts associated with the proposed project activities can be managed and mitigated by the effective implementation of the recommended management and mitigation measures and with more effort and commitment put into monitoring the implementation of these measures.

It is, therefore, recommended that in the case of granting an ECC for this project, the proposed prospecting and exploration activities may be granted an ECC, provided that:

- All the management and mitigation measures provided in the EMP are effectively and progressively implemented.
- All required permits, licenses, and approvals for the proposed activities should be obtained as required. These include permits and licenses for land use access agreements to explore and ensure compliance with these specific legal requirements.
- The Proponent and all project workers and contractors must comply with the legal requirements governing the project and ensure that all required permits and or approvals are obtained and renewed as stipulated by the issuing authorities.
- Site areas where exploration activities have ceased are rehabilitated, as far as practicable, to their pre-exploration state.

8.2 Conclusion

It is crucial for the proponents and their contractors to effectively implement the recommended management and mitigation measures, to protect the biophysical and social environment throughout the project duration. This would be done to promote environmental sustainability while ensuring a smooth and harmonious existence and purpose of the project activities in the community and environment at large. It is also to ensure that all potential impacts identified in this study and other impacts that might arise during implementation are properly identified in time and addressed accordingly. Lastly, should the ECC be issued, the Proponent will be expected to be compliant with the ECC conditions as well as legal requirements governing mineral exploration and related activities.

9 REFERENCES

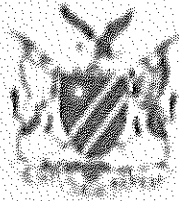
Booth, P. (2011). Environmental Conceptual Site Model Exercise: Source – pathway – receptor. WSP Global: Semantic Scholar.

Mendelsohn,. (2003). *The Atlas of Namibia. A Portrait of the land and its people.*

Mendelsohn, J., Jarvis, A., Roberts, C., & Roberston, T. 2009. Atlas of Namibia: A Portrait of the Land and its People (3rd Edition). Cape Town: Sunbird Publishers (Pty) Ltd.

Near Weather_ Omusati Region. <https://www.nearweather.com/location/omusati-na-3371206>

Wikipedia: World Reference Base for Soil Resources_ Eutric Combisol
https://en.wikipedia.org/wiki/World_Reference_Base_for_Soil_Resources



REPUBLIC OF NAMIBIA
MINISTRY OF MINES AND ENERGY

NON EXCLUSIVE PROSPECTING LICENCE

issued in terms of Section 21 of the Minerals (Prospecting and Mining) Act, 1992 (Act 33 of 1992).

Non Exclusive Prospecting Licence No: 11256

Office Reference No: 14/2/1/1/11256

1. LICENCE is hereby granted to: **Brado Investment CC**

A company registered, in terms of Section 18 (2) (ii), with company registration number CC/2019/00895, and licensee details as follow

Physical Address: Erf 552, Rosh Pinah, Namibia

Postal Address: P O Box 333, Rosh Pinah, Namibia

Tel No: 264811402175, 264811402175

Director's Name: Samuel Konkameni Eelu Nationality: Namibian

- (i) to carry on, subject to the provisions of Sections 16(2)(a),(b), and Section 16(3), prospecting operations for any mineral or group of minerals (excluding source material in terms of Section 16(2)(f)), on any land other than land stipulated in terms of Section 16(2) (c), (d) and (e) and Section 122(1), and
- (ii) subject to the provisions of Section 16(1)(b) and (c), and (5) to remove from such land any mineral or group of minerals from the place where it was found or incidentally won in the course of such prospecting operations,
- (iii) subject further to the following terms and conditions:
- (iv) The holder of this licence is entitled to peg claims in accordance with and subject to the provision of Section 25 and Part VI of the Minerals (Prospecting and Mining) Act, 1992.

2. This licence is valid for a period of 1 Year, from 24 September 2025 to 23 September 2026 and shall not be transferred or renewed, nor shall any interest in the licence be granted, ceded or assigned to any other person whether in whole or in part.

Windhoek, at 24/09/2025

(DATE)



