

**Proof of written notice to Otjozondjupa  
Regional Council**

**Date: 06 February 2026**

**Otjozondjupa Regional Council**

**P. O. Box 1682, Otjiwarongo**

**Namibia**

**TO WHOM IT MAY CONCERN**

Dear Sir/Madam,

**RE: STAKEHOLDER NOTIFICATION FOR PROPOSED EXPLORATION ACTIVITIES OF BASE & RARE METALS, DIMENSION STONES, INDUSTRIAL MINERALS, PRECIOUS METALS AND SEMI-PRECIOUS METALS WITHIN THE EXCLUSIVE PROSPECTING LICENSE (EPL) NO.10073 LOCATED NORTHEAST OF OTJIWARONGO, OTJOZONDJUPA REGION.**

Excel Dynamic Solutions (Pty) Ltd (EDS) hereby gives notice on behalf of **Quiancheng Mining Investment (Pty) Ltd** (the Proponent) about the Environmental Impact Assessment (EIA) process for the proposed mineral exploration on Exclusive Prospecting License EPL No. 10073. The EPL covers an area of 19943.1279 hectares (ha), located about 71 km northeast of Otjiwarongo, in the Otjozondjupa Region (**Figure 1**).

The EPL overlies multiple farms such as: Warlencourt No.99, Oase No.112, Ogden No. 114, Orpa No.127, Osnia No.131, Swinton No.113, Fuller No.130 and Gutweide No.135 (**Figure 2**).

The targeted commodities for the proposed exploration activities are Base and Rare Metals, Dimension Stones, Industrial Minerals, Precious Metals and Semi-Precious Metals.

The proposed exploration activities are listed in the Environmental Management Act No. 7 of 2007 and the EIA Regulations 30 of 2012 and cannot be undertaken without an Environmental Clearance Certificate (ECC). As such, an Environmental Scoping and Assessment (ESA) and Environmental Management Plan (EMP) Reports will be submitted to the Ministry of Industries, Mines and Energy (MIME) and the Ministry of Environment, Forestry and Tourism (MEFT) to support the application for decision-making

The Otjozondjupa Regional Council has been identified as an Interested and Affected Party (I&AP) and would have the right to participate in the public consultation process and provide input on potential impacts of the proposed exploration activities.

**Quiancheng Mining Investment (Pty) Ltd** intends to conduct exploration activities that entails the following:

- a) Lithology geochemical surveys which include soil and rock sampling shall be collected for trace element analysis to determine the presence of the targeted commodities.
- b) Electromagnetic and geophysical surveys shall be conducted should there be a need, following the designed exploration program.
- c) Detailed exploration drilling shall be conducted if the findings from the desktop study, lithology geochemical, electromagnetic and geophysical surveys are positive. These will entail drilling holes and sample collection for further analysis to determine the depth and spatial extent of the potential mineralization by using both Reverse Circulation (RC) and diamond drilling to about a 200 m depth.

If you have any comments, concerns, or inputs related to the proposed project, **please share them with us at the address below by the 23rd of February 2026.**

Tel: +264 (0) 61 259 530

Email: [public@edsnamibia.com](mailto:public@edsnamibia.com) / [mleonard@edsnamibia.com](mailto:mleonard@edsnamibia.com)/ [vaugustus@edsnamibia.com](mailto:vaugustus@edsnamibia.com)

---

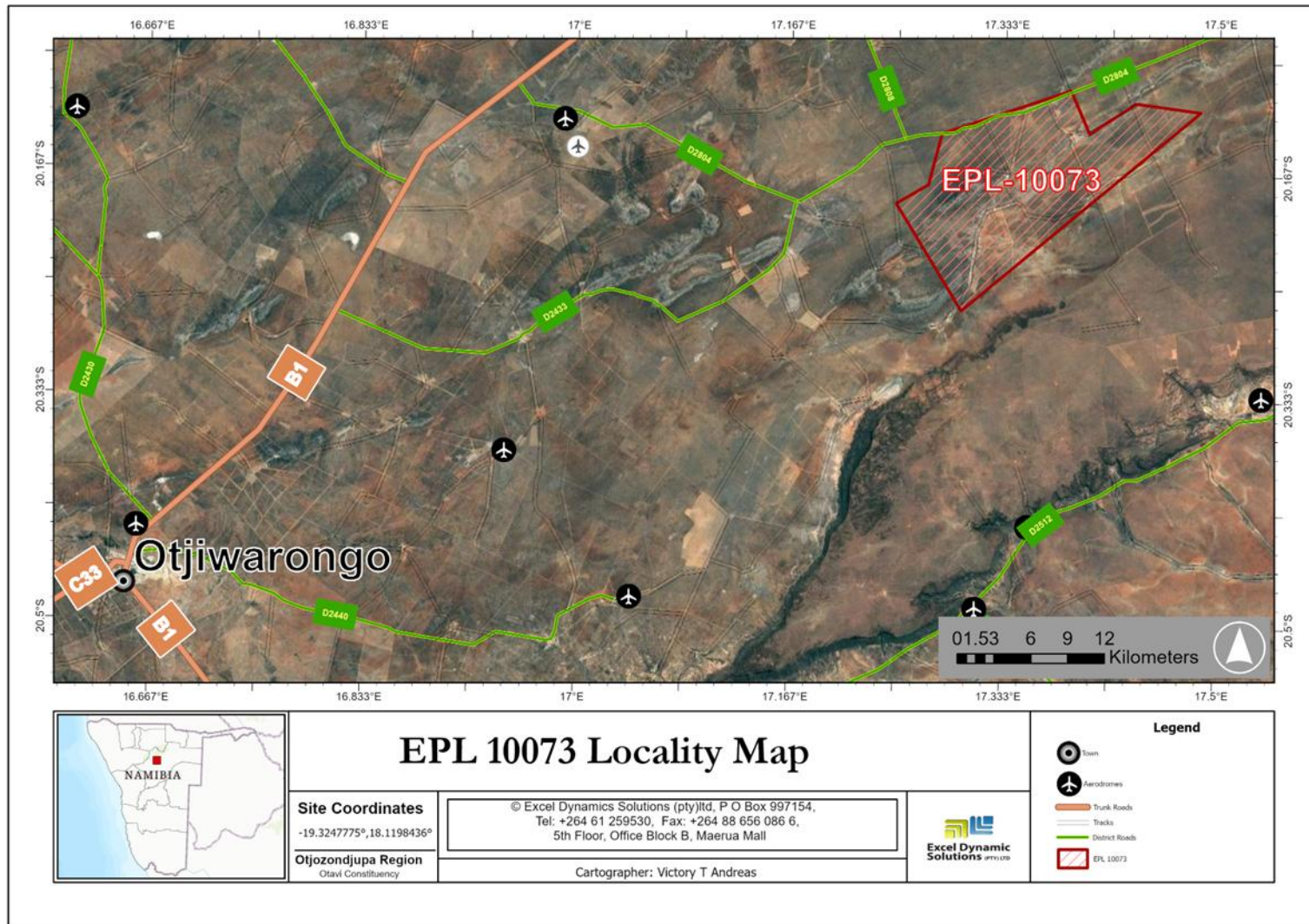


Figure 1: Locality map of EPL 10073.



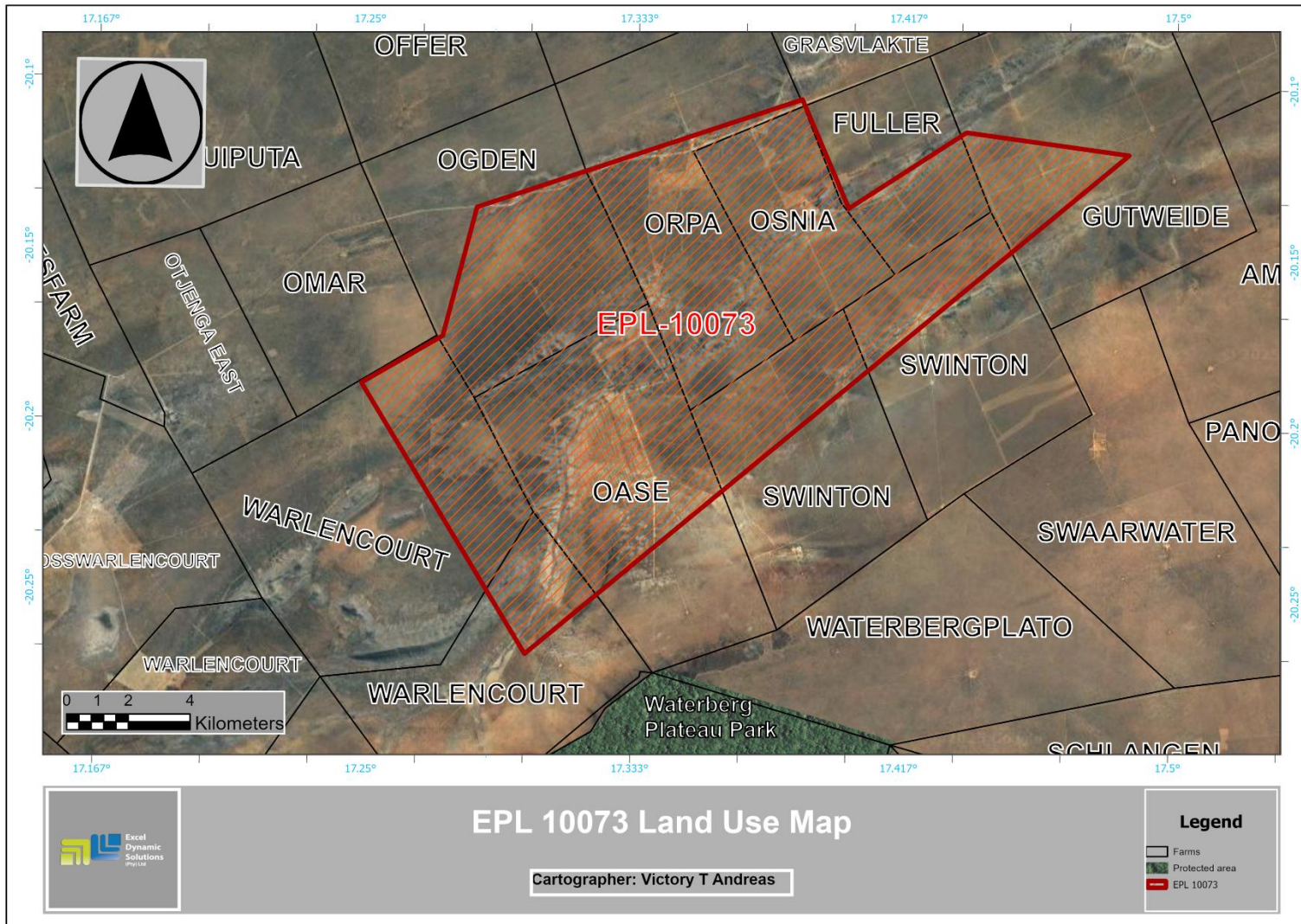


Figure 2: Land use map of EPL 10073.

**From:** vaugustus@edsnamibia.com  
**Sent:** Monday, 09 February 2026 11:49  
**To:** 'pr@otjozondjuparc.gov.na'  
**Cc:** 'Mandume Leonard'  
**Subject:** Background Information Documents (BIDs) – Proposed EPL Applications in Otjozondjupa Region  
**Attachments:** EPL 10073.pdf; EPL 10103.pdf; EPL 10299.pdf; EPL 10405.pdf; EPL 10298.pdf

Dear Esteemed Interested and Affected Party,

Mineral prospecting and exploration are listed activities that may not be undertaken without an Environmental Clearance Certificate (ECC), in accordance with the Environmental Management Act No. 7 of 2007 and the Environmental Impact Assessment (EIA) Regulations of 2012.

The Proponent has appointed **Excel Dynamic Solutions (Pty) Ltd**, an independent environmental consultancy, to undertake the required **Environmental Scoping Assessment (ESA)** process and to apply for the ECCs for the proposed prospecting and exploration activities, which are located within the **Otjozondjupa Region**.

In line with Sections 21 to 24 of the EIA Regulations, public consultation is a key component of the Environmental Assessment process and includes the identification and consultation of Interested and Affected Parties (I&APs), such as the Otjozondjupa Regional Council.

Please find attached the **Background Information Documents (BIDs)** for the following Exclusive Prospecting Licence (EPL) applications within the Otjozondjupa Region:

- EPL No. 10073
- EPL No. 10299
- EPL No. 10298
- EPL No. 10103
- EPL No. 10405

The attached documents provide information on the proposed prospecting and exploration activities and the Environmental Assessment process.

We appreciate your time and cooperation and look forward to your response.

Kind regards,



**Excel Dynamic Solutions (Pty) Ltd**

in f t i excel\_dynamic\_solutions www.edsnamibia.com



**Vistolina Augustus**  
Environmental Assessment Practitioner

Office: 3rd Floor, Stone Square | C/O Robert Mugabe & Conradie St, Windhoek  
Cell: +264 81426 9536  
Tel: +264 61 259 530  
Email: [vaugustus@edsnamibia.com](mailto:vaugustus@edsnamibia.com)

