

**Proof of written notice to Otjozondjupa  
Regional Council**

**Date: 06 February 2026**

**Otjozondjupa Regional Council**

**P. O. Box 1682, Otjiwarongo**

**Namibia**

**TO WHOM IT MAY CONCERN**

Dear Sir/Madam,

**RE: STAKEHOLDER NOTIFICATION FOR PROPOSED EXPLORATION ACTIVITIES OF BASE & RARE METALS, DIMENSION STONES, INDUSTRIAL MINERALS, PRECIOUS METALS AND SEMI-PRECIOUS METALS WITHIN THE EXCLUSIVE PROSPECTING LICENSE (EPL) NO.10103 LOCATED NORTH OF KOMBAT, OTJOZONDJUPA REGION.**

Excel Dynamic Solutions (Pty) Ltd (EDS) hereby gives notice on behalf of **Yongsheng Lithium Industry (Pty) Ltd** (the Proponent) about the Environmental Impact Assessment (EIA) process for the proposed mineral exploration on Exclusive Prospecting License EPL No. 10103.

**The EPL cover an area of 4217.2026 hectares (ha), located about 14 km north of Kombat, in the Otjozondjupa Region as shown in (Figure 1).**

The EPL overlies farms: Sumas No.2026, Sumas West, Keilberg No.1371, Auros No.1372, Block No.648 and Gauss No.46 shown in (Figure 2).

The targeted commodities for the proposed exploration activities are **Base and Rare Metals, Dimension Stones, Industrial Minerals and Precious Metals and Semi-precious stones.**

The proposed exploration activities are listed in the Environmental Management Act No. 7 of 2007 and the EIA Regulations 30 of 2012 and cannot be undertaken without an Environmental Clearance Certificate (ECC). As such, an Environmental Scoping and Assessment (ESA) and Environmental Management Plan (EMP) Reports will be submitted to the Ministry of Industries, Mines and Energy (MIME) and the Ministry of Environment, Forestry and Tourism (MEFT) to support the application for decision-making

The Otjozondjupa Regional Council has been identified as an Interested and Affected Party (I&AP) and would have the right to participate in the public consultation process and provide input on potential impacts of the proposed exploration activities.

**Yongsheng Lithium Industry (Pty) Ltd** intends to conduct exploration activities that entails the following:

- a) Lithology geochemical surveys which include soil and rock sampling shall be collected for trace element analysis to determine the presence of the targeted commodities.
- b) Electromagnetic and geophysical surveys shall be conducted should there be a need, following the designed exploration program.
- c) Detailed exploration drilling shall be conducted if the findings from the desktop study, lithology geochemical, electromagnetic and geophysical surveys are positive. These will entail drilling holes and sample collection for further analysis to determine the depth and spatial extent of the potential mineralization by using both Reverse Circulation (RC) and diamond drilling to about a 200 m depth.

If you have any comments, concerns, or inputs related to the proposed project, **please share them with us at the address below by the 23rd of February 2026.**

Tel: +264 (0) 61 259 530

Email: [public@edsnamibia.com](mailto:public@edsnamibia.com) / [mleonard@edsnamibia.com](mailto:mleonard@edsnamibia.com)/ [vaugustus@edsnamibia.com](mailto:vaugustus@edsnamibia.com)

---

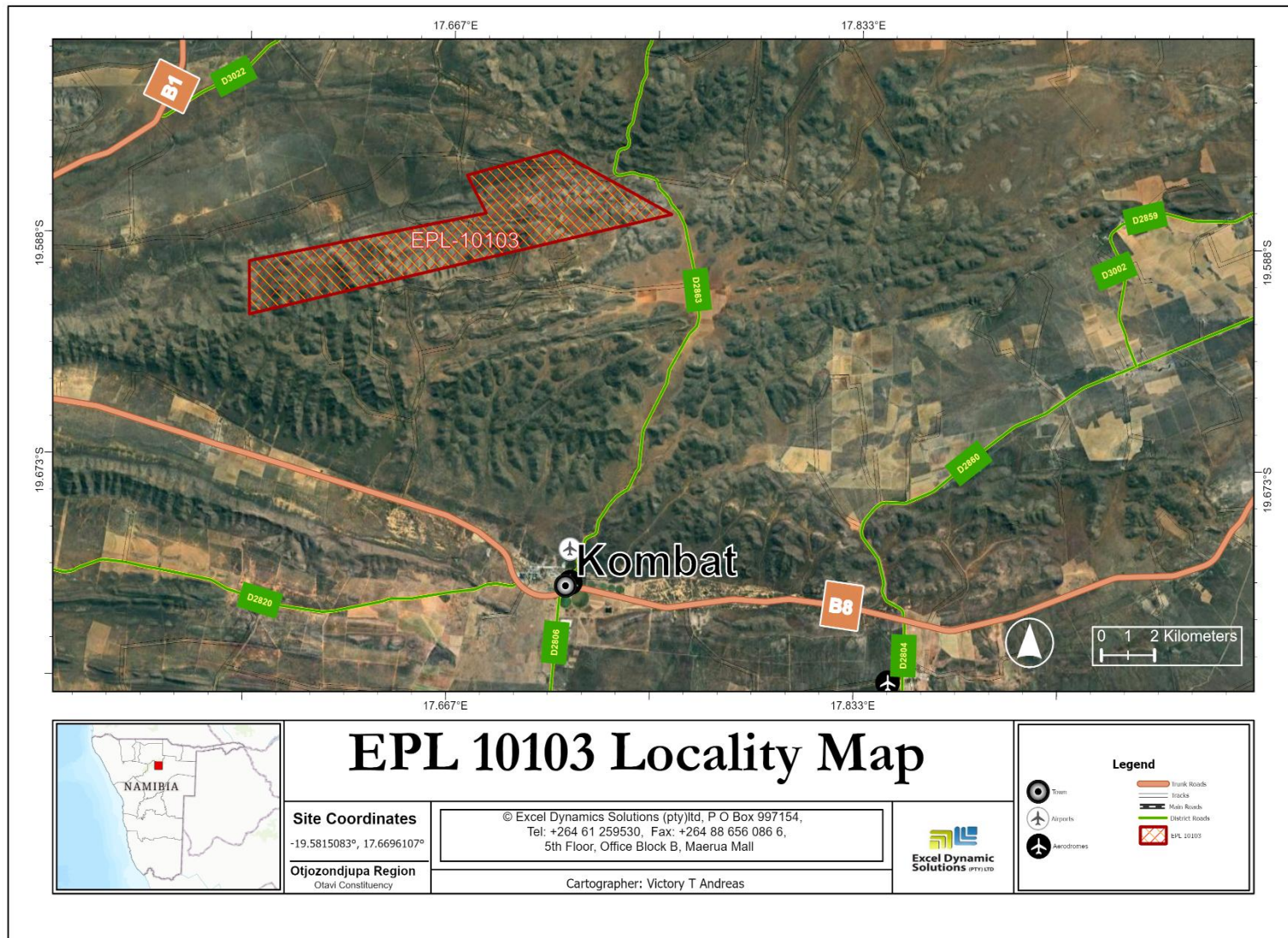


Figure 1: Locality map of EPL 10103.



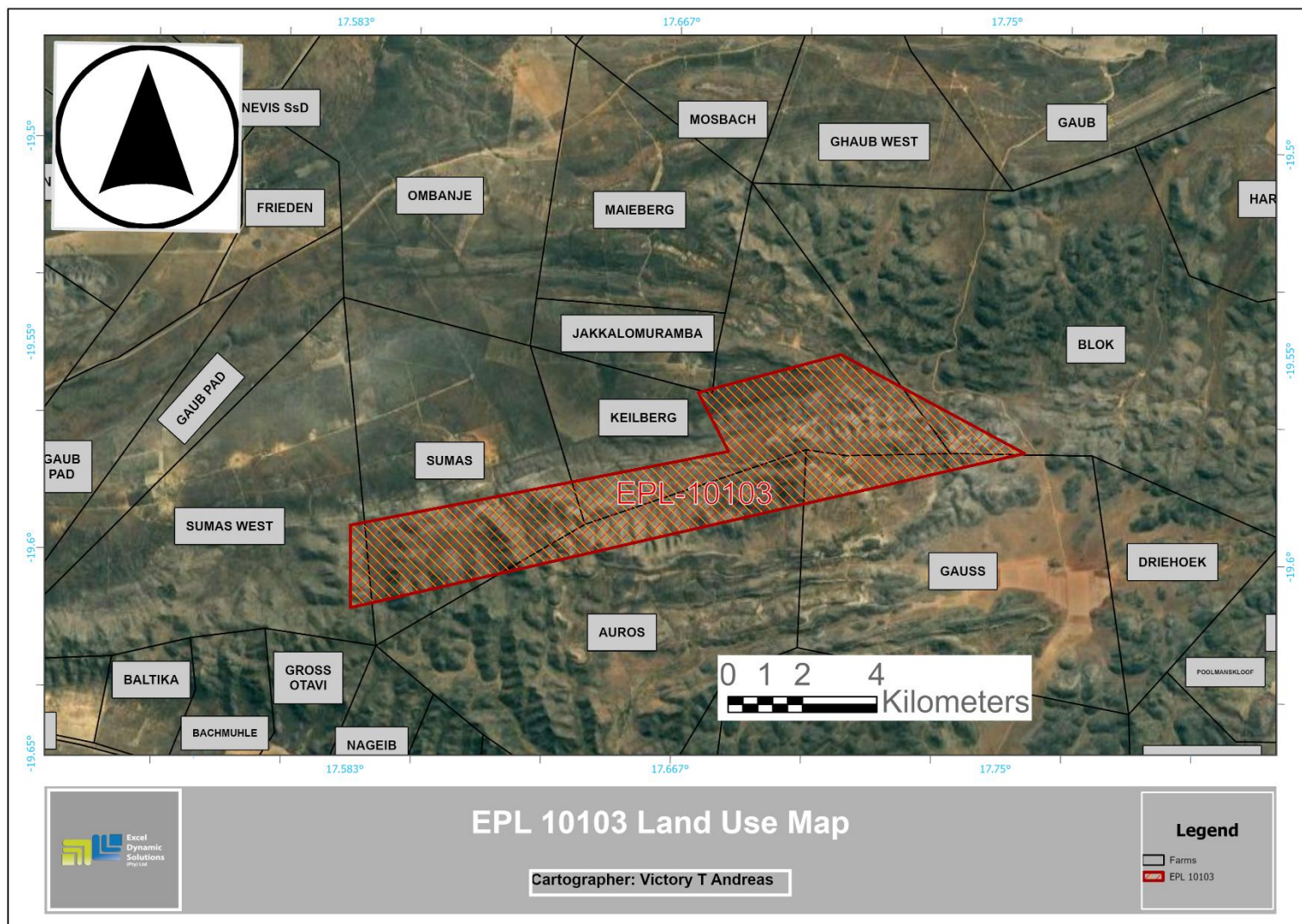


Figure 2: Land use map of EPL 10103

**From:** vaugustus@edsnamibia.com  
**Sent:** Monday, 09 February 2026 11:49  
**To:** 'pr@otjozondjuparc.gov.na'  
**Cc:** 'Mandume Leonard'  
**Subject:** Background Information Documents (BIDs) – Proposed EPL Applications in Otjozondjupa Region  
**Attachments:** EPL 10073.pdf; EPL 10103.pdf; EPL 10299.pdf; EPL 10405.pdf; EPL 10298.pdf

Dear Esteemed Interested and Affected Party,

Mineral prospecting and exploration are listed activities that may not be undertaken without an Environmental Clearance Certificate (ECC), in accordance with the Environmental Management Act No. 7 of 2007 and the Environmental Impact Assessment (EIA) Regulations of 2012.

The Proponent has appointed **Excel Dynamic Solutions (Pty) Ltd**, an independent environmental consultancy, to undertake the required **Environmental Scoping Assessment (ESA)** process and to apply for the ECCs for the proposed prospecting and exploration activities, which are located within the **Otjozondjupa Region**.

In line with Sections 21 to 24 of the EIA Regulations, public consultation is a key component of the Environmental Assessment process and includes the identification and consultation of Interested and Affected Parties (I&APs), such as the Otjozondjupa Regional Council.

Please find attached the **Background Information Documents (BIDs)** for the following Exclusive Prospecting Licence (EPL) applications within the Otjozondjupa Region:

- EPL No. 10073
- EPL No. 10299
- EPL No. 10298
- EPL No. 10103
- EPL No. 10405

The attached documents provide information on the proposed prospecting and exploration activities and the Environmental Assessment process.

We appreciate your time and cooperation and look forward to your response.

Kind regards,



**Excel Dynamic Solutions (Pty) Ltd**

in f t i excel\_dynamic\_solutions www.edsnamibia.com



**Vistolina Augustus**  
Environmental Assessment Practitioner

**Office:** 3rd Floor, Stone Square | C/O Robert Mugabe & Conradie St, Windhoek  
**Cell:** +264 81426 9536  
**Tel:** +264 61 259 530  
**Email:** [vaugustus@edsnamibia.com](mailto:vaugustus@edsnamibia.com)

