

## 2.4. PROJECT LOCATION

The EPL 9876 and 9877 are situated about Nine (9) km and five (5) km South-east of the Otavi Town and Kombat Village respectively, within the Otjozondjupa Region. The dominant land-use in the area is predominantly consist of commercial livestock farms and a few that were partially converted into game-farm with the aim of accommodating tourism activities. The EPL is mainly accessible via the B1 connecting the Town of Otavi to Otjiwarongo, the B8 (Trans-Zambezi Highway) and then the district gravel roads D2804, D2807 and D2820. Other section of the EPLs may only be accessed by existing farm tracks or by foot to ensure minimum impacts on the receiving environment.

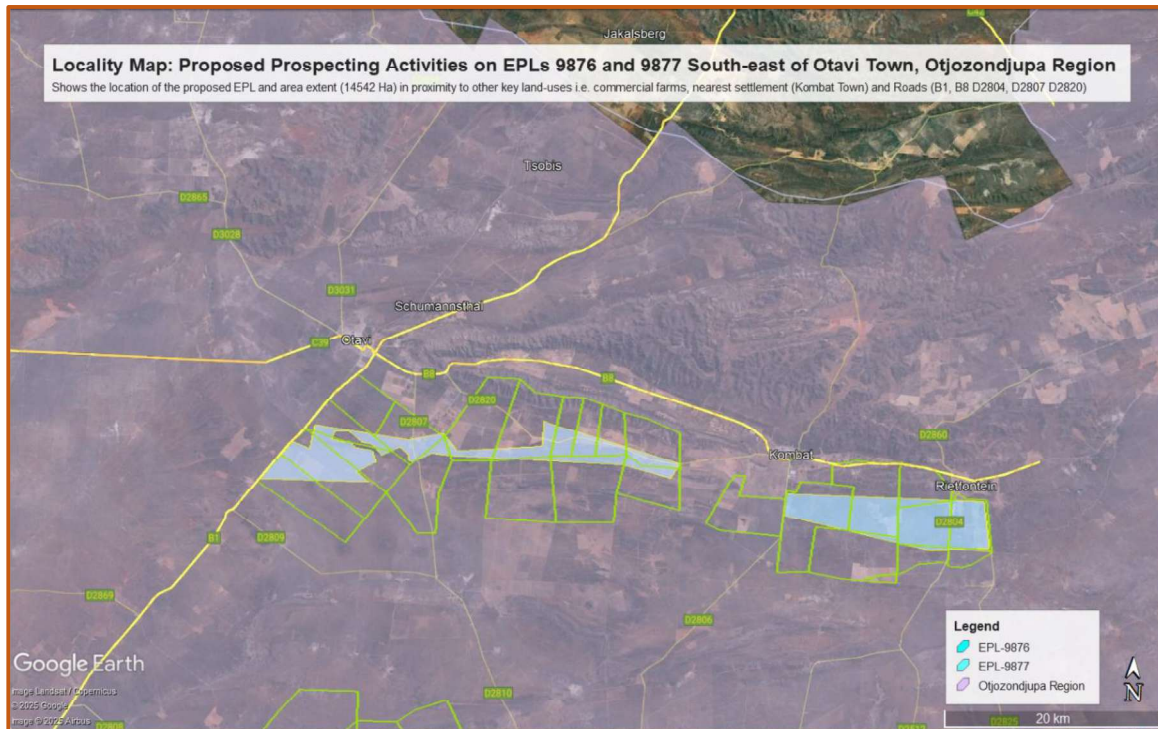


Figure 3: Locality map of the proposed Exclusive Prospecting License (EPL) 9876 and 9877, Otjozondjupa Region

Table 3: Corner coordinates of the proposed development site

Corner point	Latitude	Longitude
A – EPL 9876 and 9877 Corner Point 1	-22.347284°	18.282964°
B – EPL 9876 and 9877 Corner Point 2	-22.350156°	18.284311°
C – EPL 9876 and 9877 Corner Point 3	-22.345949°	18.367630°
D – EPL 9876 and 9877 Corner Point 4	-22.333161°	18.381108°
E – EPL 9876 and 9877 Corner Point 5	-22.378561°	18.388390°
F – EPL 9876 and 9877 Corner Point 6	-22.406269°	18.360186°
G – EPL 9876 and 9877 Corner Point 6	-22.350050°	18.377083°

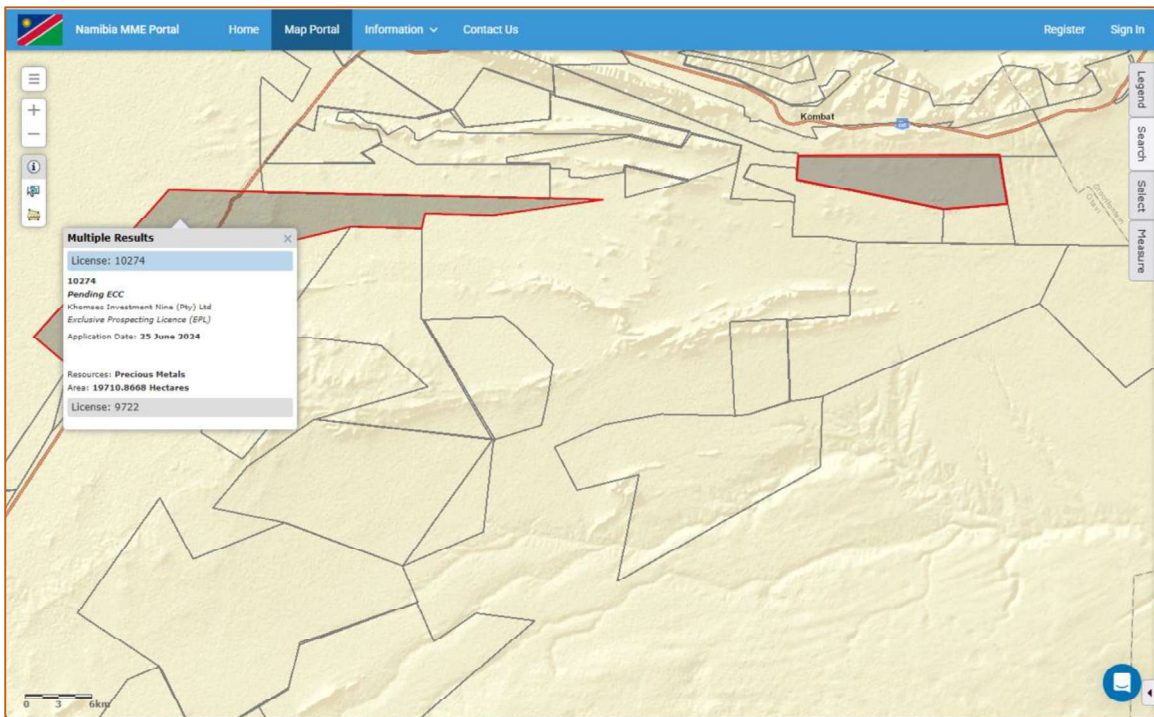


Figure 4: Evidence of the proposed EPLs application on the Ministry of Mine's cadastre (MME, 2025)

## 2.4. SUPPORTING INFRASTRUCTURE

### 2.4.1 Basecamp

Given the location the Exclusive Prospecting License (EPL) in a communal area, a suitable site must be identified in collaboration with all relevant authorities including the Property / Farm Owners to decide on a basecamp location. Where practical and possible, it is strictly recommended that for unskilled labour, local community members are employed and thus accommodated at the base-camp pre-identified in collaboration with the property owner and only for the duration during which the exploration programme is being implemented.

This is a key and necessary management exercise to mitigate and reduce potential conflict with the property owner in regard to wildlife and livestock management protocols. Critically, it is highly recommended that temporary ablution facilities must be provided and limited to within the existing base-camp footprint pre-identified and agreed upon by the stakeholder in the proposed development, and the necessary authorization must be obtained prior to installation of any such facility.

### 2.4.2 Water supply

Water will, at this stage only be required mainly for domestic use and will be sourced from the nearby boreholes or Otavi or Grootfontein Towns and transported by truck in 5 000 litres water tanks, thus equally stored in tanks at the base-camp site. Where portable ablution facility are provided, it is recommended that they are regularly emptied and sewer transported by the returning water supply truck.