

2.4. PROJECT LOCATION

The EPL 9882 is situated about Sixteen (16) km South-east of the Tsumeb Town, within the Oshikoto Region (**Figure 3**, locality map and **Table 3** corner coordinates). The dominant land-use in the area is predominantly consisting of commercial livestock farms (listed in **Table 4**) and a few that were partially converted into game-farm with the aim of accommodating tourism activities.

The EPL is mainly accessible via the B1 connecting the Town of Tsumeb to Otjiwarongo and then the C24 District gravel road and other section of the EPLs may only be accessed by existing farm tracks or by foot to ensure minimum impacts on the receiving environment.

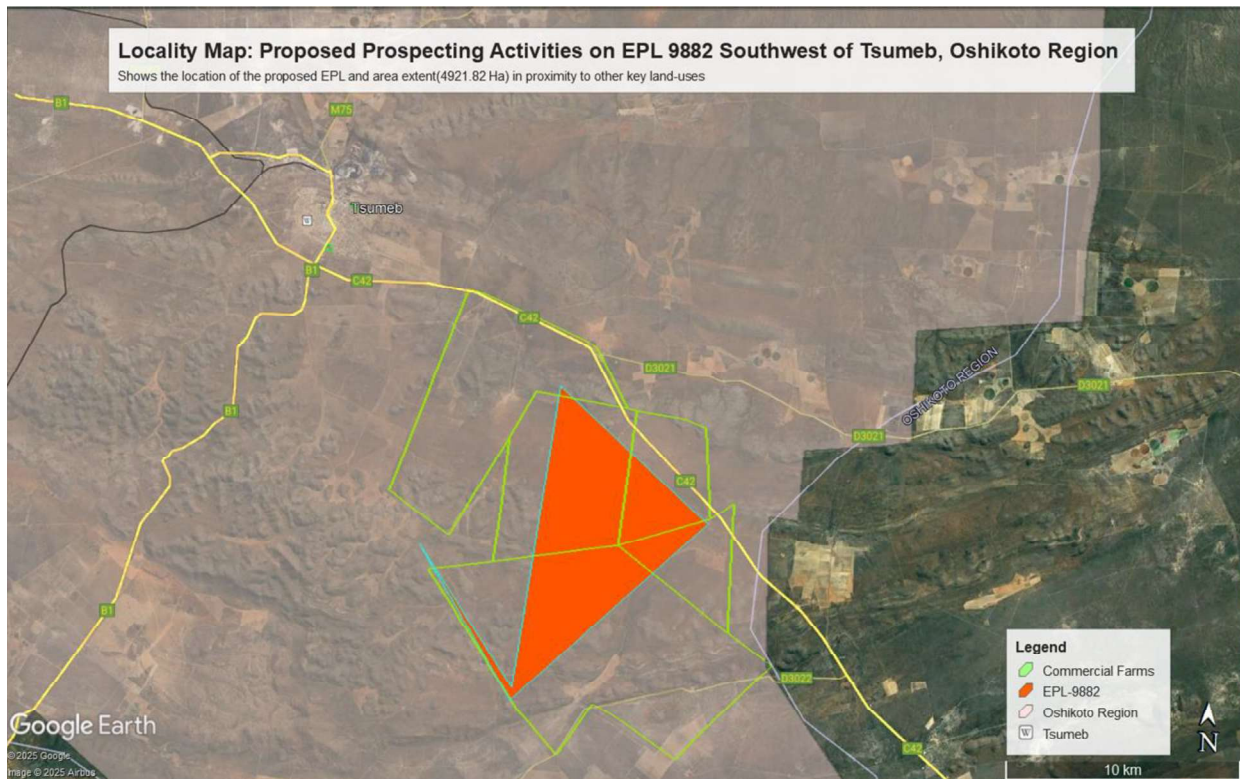


Figure 3: Locality map of the proposed Exclusive Prospecting License (EPL) 9882, Oshikoto Region

Table 3: Corner coordinates of the proposed development site

Corner point	Latitude	Longitude
A – EPL 9882 Corner Point 1	-19.309701°	17.805700°
B – EPL 9882 Corner Point 2	-19.422918°	17.791086°
C – EPL 9882 Corner Point 3	-19.372602°	17.751780°
D – EPL 9882 Corner Point 4	-19.429802°	17.790832°
E – EPL 9882 Corner Point 5	-19.360628°	17.867672°

Table 4: Shows a list of commercial farms overlain by the proposed EPL 9882

Commercial / Resettlement Farms			
Farm 1	Farm Kraalkop No. 1269	Farm 11	Farm Nosib Block III No. 655/REM
Farm 2	Farm Calcutta No. 679	Farm 12	Farm Cherbourg No. 681
Farm 3	Farm Kraalkop No. 772/Rem	Farm 13	

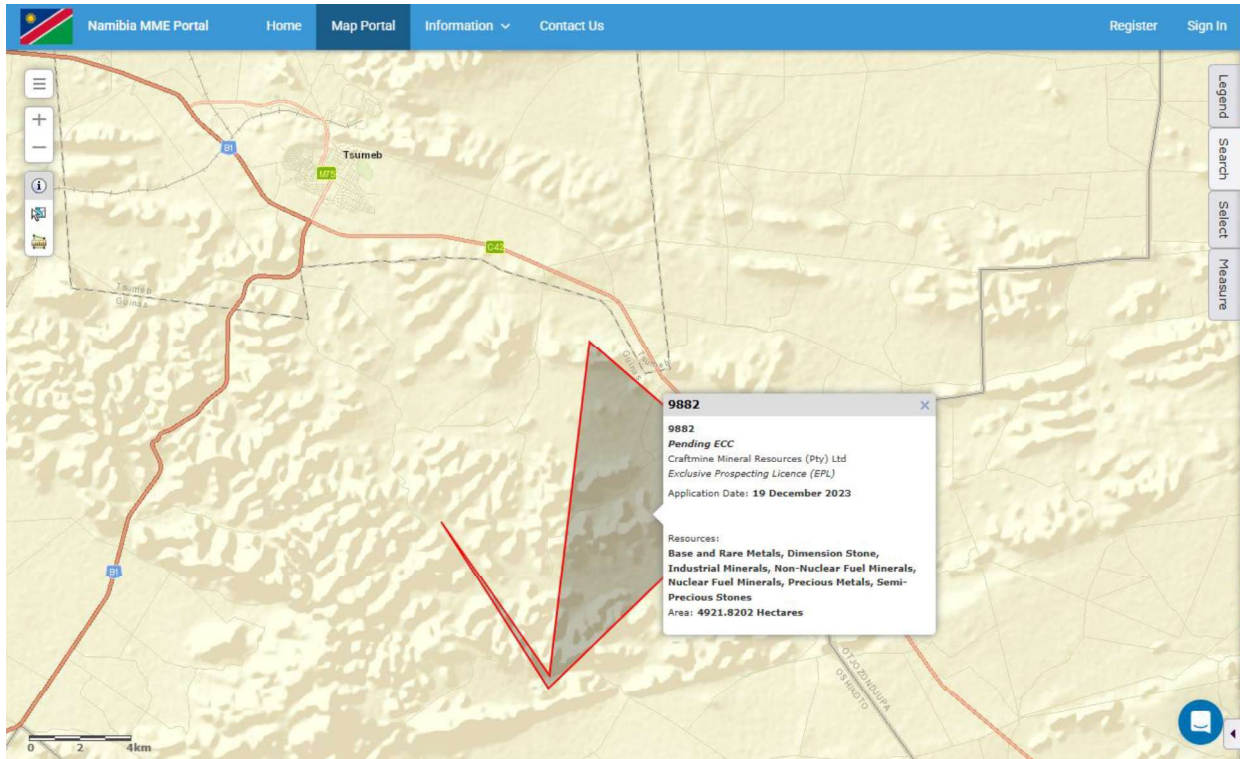


Figure 4: Evidence of the proposed Exclusive Prospecting License (EPL) application on the Ministry of Mine’s cadastre (MME, 2025)

2.5. SUPPORTING INFRASTRUCTURE

2.5.1 Basecamp

Given the location the Exclusive Prospecting License (EPL) in a commercial area, a suitable site must be identified in collaboration with all relevant authorities including the Property / Farm Owners to decide on a basecamp location. The camp site will consist of tents, caravans and/or make-shift buildings and temporary ablution facilities.

This is a key and necessary management exercise to mitigate and reduce potential conflict with the property owner in regard to wildlife and livestock management protocols. Critically, it is highly recommended that temporary ablution facilities must be provided and limited to within the existing base-camp footprint pre-identified and agreed upon by the stakeholder in the proposed development, and the necessary authorization must be obtained prior to installation of any such facility. The following supporting infrastructures and services will be required:

- (i) External and internal roads network: The Proponent will upgrade the already existing external and internal road networks and created additional new access road linking the quarries (mine) sites to the main access;