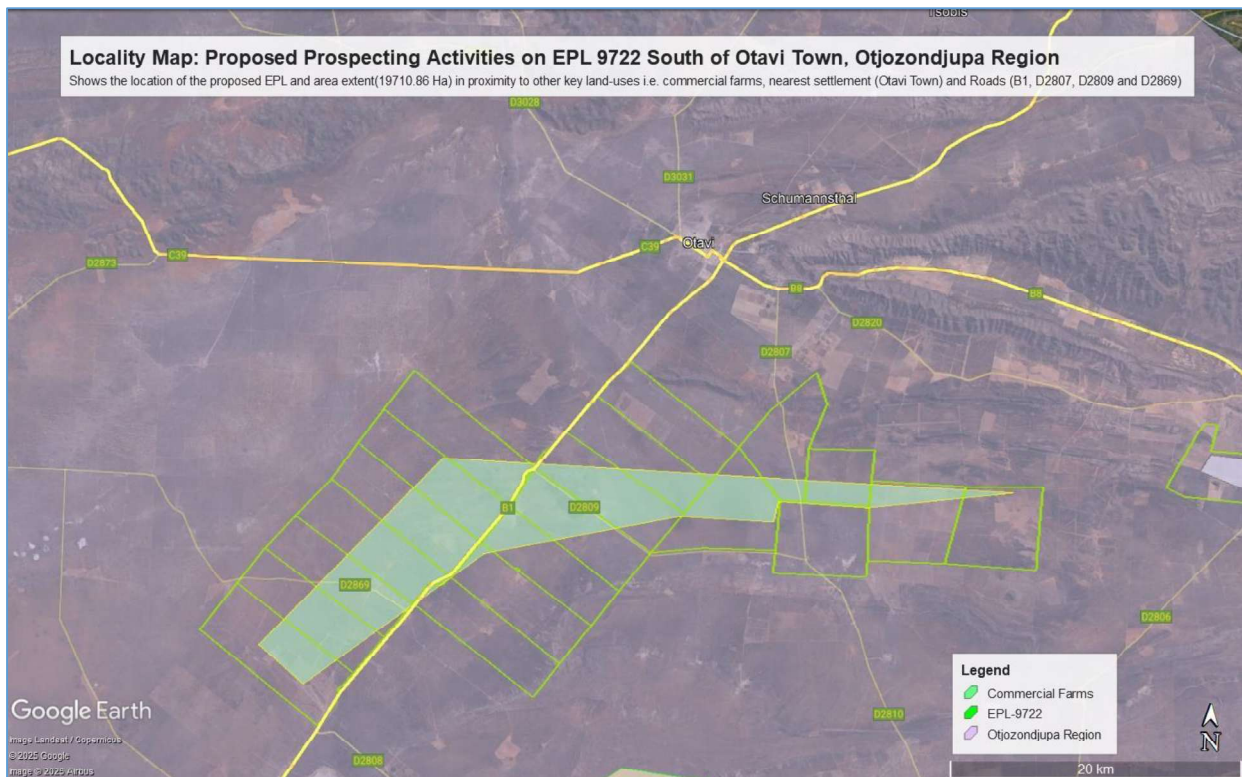


## 2.4. PROJECT LOCATION

The EPL 9722 is situated about Sixteen (16) km South-east of the Otavi Town, within the Otjozondjupa Region (**Figure 3**, locality map and **Table 3** corner coordinates). The dominant land-use in the area is predominantly consisting of commercial livestock farms (listed in **Table 4**) and a few that were partially converted into game-farm with the aim of accommodating tourism activities.

The EPL is mainly accessible via the B1 connecting the Town of Otavi to Otjiwarongo and also the D2807, D2809 and D2869 District gravel roads and other section of the EPLs may only be accessed by existing farm tracks or by foot to ensure minimum impacts on the receiving environment.



**Figure 3:** Locality map of the proposed Exclusive Prospecting License (EPL) 9722, Otjozondjupa Region

**Table 3:** Corner coordinates of the proposed development site

Corner point	Latitude	Longitude
A – EPL 9722 Corner Point 1	-19.812945°	17.760132°
B – EPL 9722 Corner Point 2	-19.809029°	17.732897°
C – EPL 9722 Corner Point 3	-19.810601°	17.705874°
D – EPL 9722 Corner Point 4	-19.777036°	17.707237°
E – EPL 9722 Corner Point 5	-19.762230°	17.664505°
F – EPL 9722 Corner Point 6	-19.751093°	17.670621°
G – EPL 9722 Corner Point 7	-19.754793°	17.709141°
H – EPL 9722 Corner Point 8	-19.764424°	17.709593°
I – EPL 9722 Corner Point 9	-19.788505°	17.833380°
J – EPL 9722 Corner Point 10	-19.815164°	17.834059°

Table 4: Shows a list of commercial farms overlain by the proposed EPL 9722

Commercial / Resettlement Farms			
Farm 1	Farm Hamburg No. 504	Farm 11	Farm Vindsval No. 582
Farm 2	Farm Omuhona No. 503	Farm 12	Farm Ego No. 579
Farm 3	Farm Otjikururume No. 502	Farm 13	Farm Egue No. 578
Farm 4	Farm Hohentwiel Nord No. 506/REM	Farm 14	Farm Jord No. 555
Farm 5	Farm Ondjondjo No. 505	Farm 15	Farm Conradi No. 556
Farm 6	Farm Omagonde No. 501	Farm 16	Farm Gruental No. 557
Farm 7	Farm Achalm No. 583	Farm 17	Farm Hedwigshof No. 558
Farm 8	Farm Osib No. 581	Farm 18	Farm Glucksburg No. 559
Farm 9	Farm Hohental No. 327	Farm 19	Farm Tirol No. 560
Farm	Farm Hoder No. 580/Rem	Farm 20	Farm Hohental No. 554

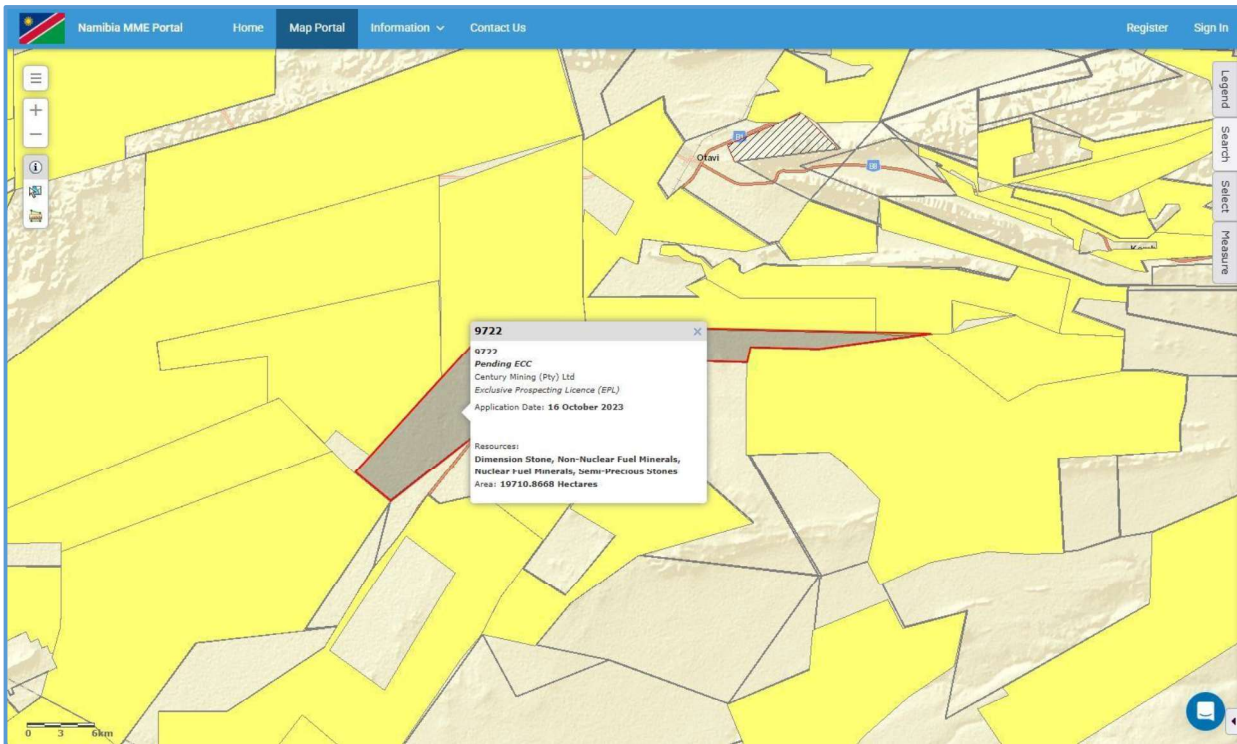


Figure 4: Evidence of the proposed Exclusive Prospecting License (EPL) application on the Ministry of Mine's cadastre (MME, 2025)

## 2.5. SUPPORTING INFRASTRUCTURE

### 2.5.1 Basecamp

Given the location the Exclusive Prospecting License (EPL) in a commercial area, a suitable site must be identified in collaboration with all relevant authorities including the Property / Farm Owners to decide on a basecamp location. The camp site will consist of tents, caravans and/or make-shift buildings and temporary ablution facilities.

This is a key and necessary management exercise to mitigate and reduce potential conflict with the property owner in regard to wildlife and livestock management protocols. Critically, it is highly recommended that temporary ablution facilities must be provided and limited to within the existing base-camp footprint pre-identified and agreed upon by the stakeholder in the proposed