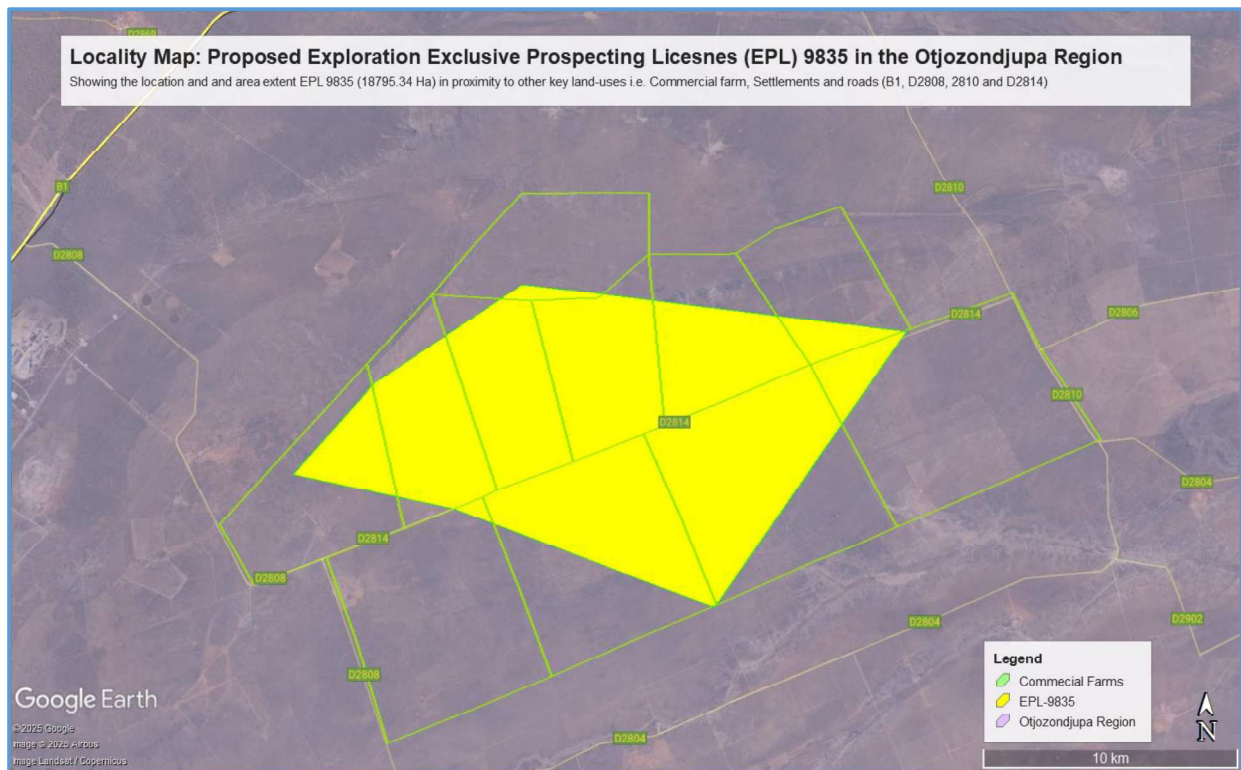


## 2.4. PROJECT LOCATION

The EPL 9835 is situated about thirty-eight (38) km South of the Otavi Town, within the Otjozondjupa Region (**Figure 3**, locality map and **Table 3** corner coordinates). The dominant land-use in the area is predominantly consisting of commercial livestock farms (listed in **Table 4**) and a few that were partially converted into game-farm with the aim of accommodating tourism activities.

The EPL is mainly accessible via the B1 connecting the Otavi Town to Otjiwarongo and then the D2808, D2810 and D2814 district gravel roads and other section of the EPL may only be accessed by existing farm tracks or by foot to ensure minimum impacts on the receiving environment.



**Figure 3:** Locality map of the proposed Exclusive Prospecting License (EPL) 9835, Omaheke Region

**Table 3:** Corner coordinates of the proposed development site

Corner point	Latitude	Longitude
A – EPL 9835 Corner Point 1	-20.029302°	17.208233°
B – EPL 9835 Corner Point 2	-19.996853°	17.237661°
C – EPL 9835 Corner Point 3	-19.957325°	17.294577°
D – EPL 9835 Corner Point 4	-19.974438°	17.447876°
E – EPL 9835 Corner Point 5	-20.076284°	17.371181°
F – EPL 9835 Corner Point 6	-20.040845°	17.270752°

Table 4: Shows a list of commercial farms overlain by the proposed EPL 9835

Commercial / Resettlement Farms	
Farm 1	Farm Offer No. 117
Farm 2	Farm Oslo No. 121
Farm 3	Farm Una No. 139
Farm 4	Farm Onora No. 138
Farm 5	Farm Fairview No. 488
Farm 6	Farm Nuchomis No. 335
Farm 7	Farm Luipaardskop No. 487
Farm 8	Farm Irene No. 485
Farm 9	Farm Elandsvlei No. 484
Farm 10	Farm Tafelberg No. 491
Farm 11	Farm Bonnie-Brae No. 483

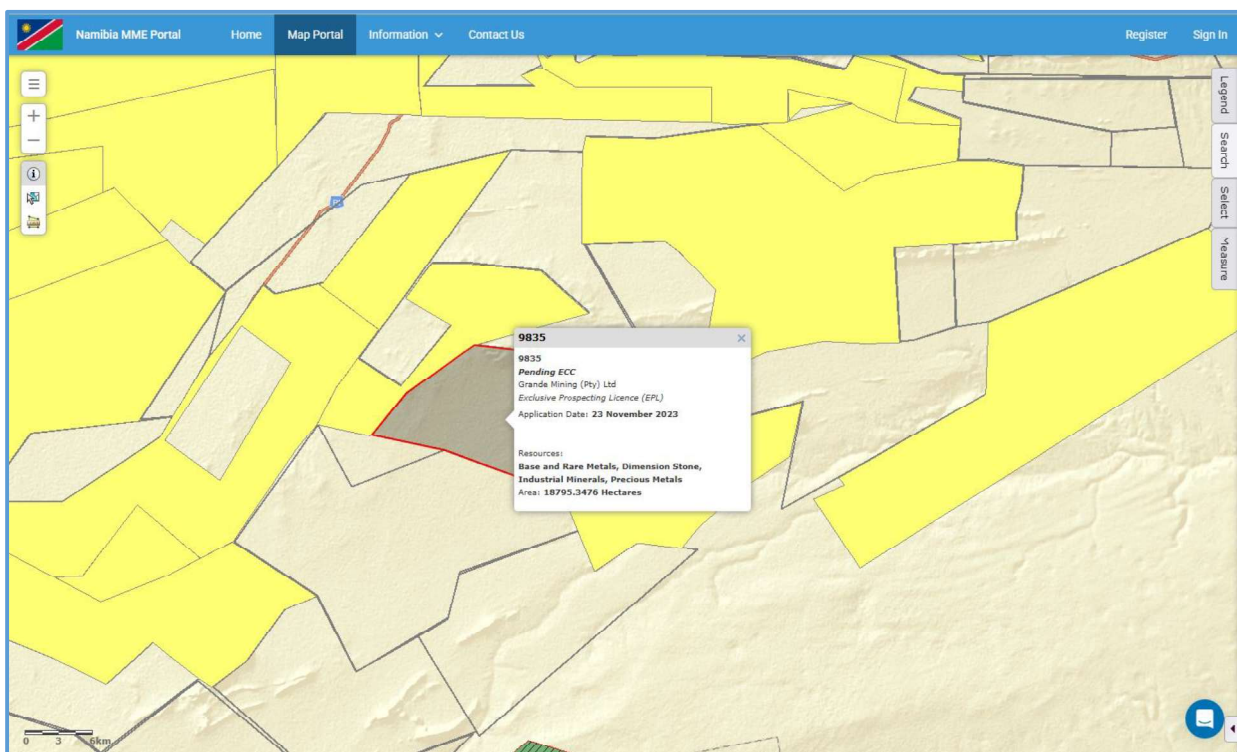


Figure 4: Evidence of the proposed Exclusive Prospecting License (EPL) application on the Ministry of Mine’s cadastre (MME, 2025)

## 2.5. SUPPORTING INFRASTRUCTURE

### 2.5.1 Basecamp

Given the location the Exclusive Prospecting License (EPL) in a commercial area, a suitable site must be identified in collaboration with all relevant authorities including the Property / Farm Owners to decide on a basecamp location. The camp site will consist of tents, caravans and/or make-shift buildings and temporary ablution facilities.

This is a key and necessary management exercise to mitigate and reduce potential conflict with the property owner in regard to wildlife and livestock management protocols. Critically, it is highly recommended that temporary ablution facilities must be provided and limited to within the