

ECC-79-647-LET-05-A

12 January 2026

**Identified stakeholder and potential interested or affected party for the following Project:**

**RE – NOTICE OF AN ENVIRONMENTAL AND SOCIAL IMPACT ASSESSMENT FOR THE EXPLORATION OF NUCLEAR FUELS ON EPL 8791, =/=GAINGU CONSERVANCY, ERONGO REGION, AS PART OF AN ENVIRONMENTAL CLEARANCE CERTIFICATE APPLICATION FOR MARENICA VENTURES (PTY) LTD.**

Dear Sir or Madam,

Environmental Compliance Consultancy (Pty) Ltd (ECC) (herein referred to as the environmental assessment practitioner (EAP)), has been engaged by Marenica Ventures (Pty) Ltd (herein referred to as the Proponent) to conduct an environmental and social impact assessment (ESIA) and compile an environmental and social management plan (ESMP) for exploration of nuclear fuel minerals on exclusive prospecting licence (EPL) 8791, =/=Gaingu Conservancy, Erongo Region.

In line with the requirements of the Environmental Management Act, No. 7 of 2007 and its 2012 associated Regulations, an environmental clearance certificate application is being compiled and will be submitted to the mining commissioner (MC) as the competent authority for the Project, at the Ministry of Industries, Mines and Energy (MIME). The application will then be forwarded to the environmental commissioner (EC) at the Ministry of Environment, Forestry and Tourism (MEFT) for review and to make a record of decision (RoD) regarding the proposed Project.

Elevate Uranium Ltd is an Australian exploration and development company focused on uranium projects in Namibia and Australia. Marenica Ventures (Pty) Ltd is Elevate Uranium's Namibian subsidiary that holds and manages its local exclusive prospecting licences (such as EPL 8791). The Proponent is one of the largest uranium tenement holders in Namibia, with several projects in the Erongo Region, including Koppies, Namib IV, Hirabeb and Capri. The company is also developing its U-grade™ technology to enhance uranium recovery from low-grade ores.

Namibia is a leading global uranium producer, hosting major operations like Rössing Uranium Mine, Husab Mine and Langer Heinrich Uranium Mine. Elevate Uranium, through Marenica Ventures, is actively exploring in this established uranium province to expand its resource base and advance future development opportunities.

The Proponent intends to carry out minimally invasive exploration on EPL 8791, for which MIME has issued the Proponent a preparedness to grant notice. This has been granted to the Proponent on the basis that they obtain an environmental clearance certificate for these activities.

The Proponent intends to conduct the following exploration activities:

- Geological mapping/reconnaissance and flying of drones;
- Geophysics (magnetic surveys and gamma-ray spectrometry);
- Geochemical analysis; (soil and rock sampling and assays) and

- Drilling, which may consist of either rotary air blast (RAB), reverse circulation (RC) or diamond drilling (DD).

The EPL is located east of Henties Bay, in the Gaingu Conservancy, Erongo Region, with a portion of the EPL overlapping with Farm Hoopverloor (No. 88) and neighbours Farm Marenica (No. 1140) (-21.861885, 14.871073) (map attached).

The background information document (BID) provides further Project details and the scope of the ESIA, which can be downloaded from the link provided below: <https://eccenvironmental.com/download/exploration-for-nuclear-fuels-on-epl-8791-erongo-region/>

This letter serves to engage potential I&APs for the Project and to establish a communication channel with ECC for the ESIA process. You have been identified as a stakeholder and potential I&AP and ECC would therefore like to inform you of the opportunities available for your participation in the ESIA. As part of this process, ECC cordially invites you to register as an I&AP to ensure your involvement and engagement throughout the assessment.

If you are unable to complete the registration form online, please contact us via email for assistance at info@eccenvironmental.com, or alternatively call our office at +264 81 669 7608.

Should you require our assistance with the details contained within this letter, please do not hesitate to contact us and we will gladly assist.

Yours sincerely,

  
**Stephan Bezuidenhout**  
[stephan@eccenvironmental.com](mailto:stephan@eccenvironmental.com)

  
**Jessica Bezuidenhout Mooney**  
[jessica@eccenvironmental.com](mailto:jessica@eccenvironmental.com)

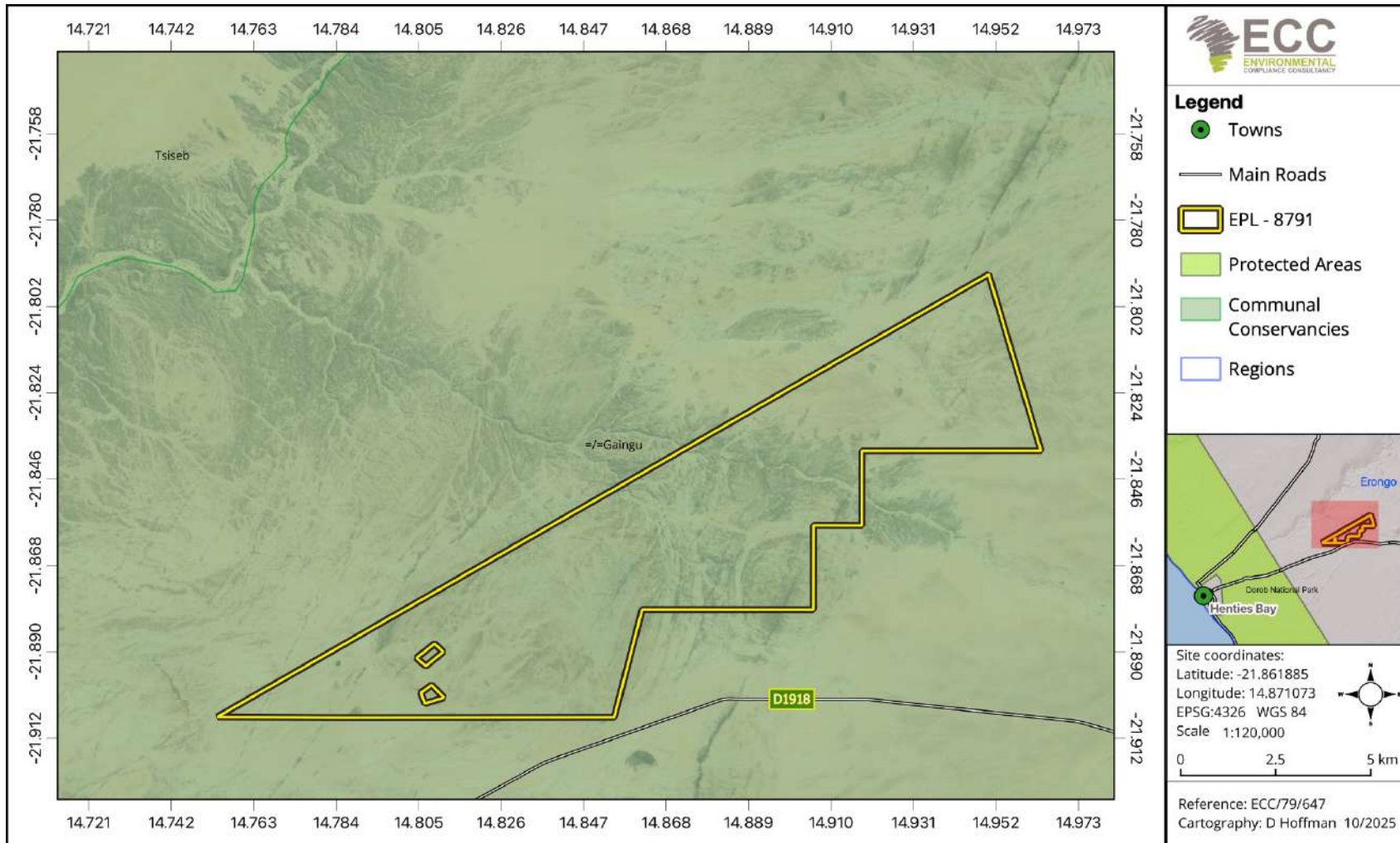


Figure 1 - Location map of EPL 8791

Info ECC <info@eccenvironmental.com>

to Kelly, Carlene, Jessica, Stephan, bcc: damian, bcc: Erasmus.Shivolo, bcc: Frieda.Flavianu, bcc: salomon, bcc: cro, bcc: skauari, bcc: info, bcc: info, bcc: Teofilus.Nghitila, bcc: timoteus.mufeti, bcc: Saima.Angula, bcc: Caroline.Garus-Oas, bcc: EC

Good day,

Environmental Compliance Consultancy (Pty) Ltd (ECC) (the environmental assessment practitioner (EAP)), has been engaged by Marenica Ventures (Pty) Ltd to conduct an environmental and social scoping with impact assessment process and compile an environmental and social management plan (ESMP) for exploration of nuclear fuel minerals on exclusive prospecting licence (EPL) 8791, =/=Gaingu Conservancy, Erongo Region.

You have been identified as a stakeholder and potential I&AP and ECC cordially invites you to register as an I&AP to ensure your involvement and engagement throughout the assessment.

Please find attached a stakeholder letter to provide you with the Project information.

Also kindly see below the website to access the Project background information document:  
<https://eccenvironmental.com/download/exploration-for-nuclear-fuels-on-epl-8791-erongo-region/>

Once the scoping plus impact assessment report and ESMP are finalised, we intend to share them with you for your review before final submission.

On behalf of our team, thank you and kind regards,

**Environmental Compliance Consultancy (ECC)**

Office Tel: +264 81 669 7608  
Postal: PO BOX 81193 | Klein Windhoek | Namibia  
Address: 13 Simeon Shixungileni Street (Old Bismarck St) | Windhoek Central | Windhoek  
Email: [info@eccenvironmental.com](mailto:info@eccenvironmental.com)  
Website: [www.eccenvironmental.com](http://www.eccenvironmental.com)



Office hours: Please note that our office operates between 07:00 am to 5:00 pm Namibian time, Monday to Friday. Additionally, please feel free to contact our office on +264 81 669 7608 or you can leave a message and one of our ECC team members will be able to assist you.

Environmental Compliance Consultancy Notice: This message and any attached files may contain information that is confidential and/or subject of legal privilege intended only for use by the intended recipient. If you are not the intended recipient or the person responsible for delivering the message to the intended recipient, be advised that you have received this message in error and that any dissemination, copying or use of this message or attachment is strictly forbidden, as is the disclosure of the information therein. If you have received this message in error please notify the sender immediately and delete the message.

One attachment • Scanned by Gmail 🗑️ Add to Drive

