

2.4. PROJECT LOCATION

The EPL 9755 is situated about 55 km North-west of Witvlei Settlement, in the Omaheke Region (**Figure 3**, locality map and **Table 3** corner coordinates). The dominant land-use in the area is predominantly consisting of commercial livestock farms (listed in **Table 4**) and a few that were partially converted into game-farm with the aim of accommodating tourism activities. The EPL is directly accessible via the B6 (Trans-Kalahari highway) and then the C29 district gravel road, while other section of the EPL will only be accessed by foot to ensure minimum impacts on the receiving environment. within the Otjozondjupa Region.

The dominant land-use in the area is predominantly consisting of commercial livestock farms and a few that were partially converted into game-farm with the aim of accommodating tourism activities. The EPL is mainly accessible via the D2102 District gravel road and other section of the EPL may only be accessed by existing farm tracks or by foot to ensure minimum impacts on the receiving environment.

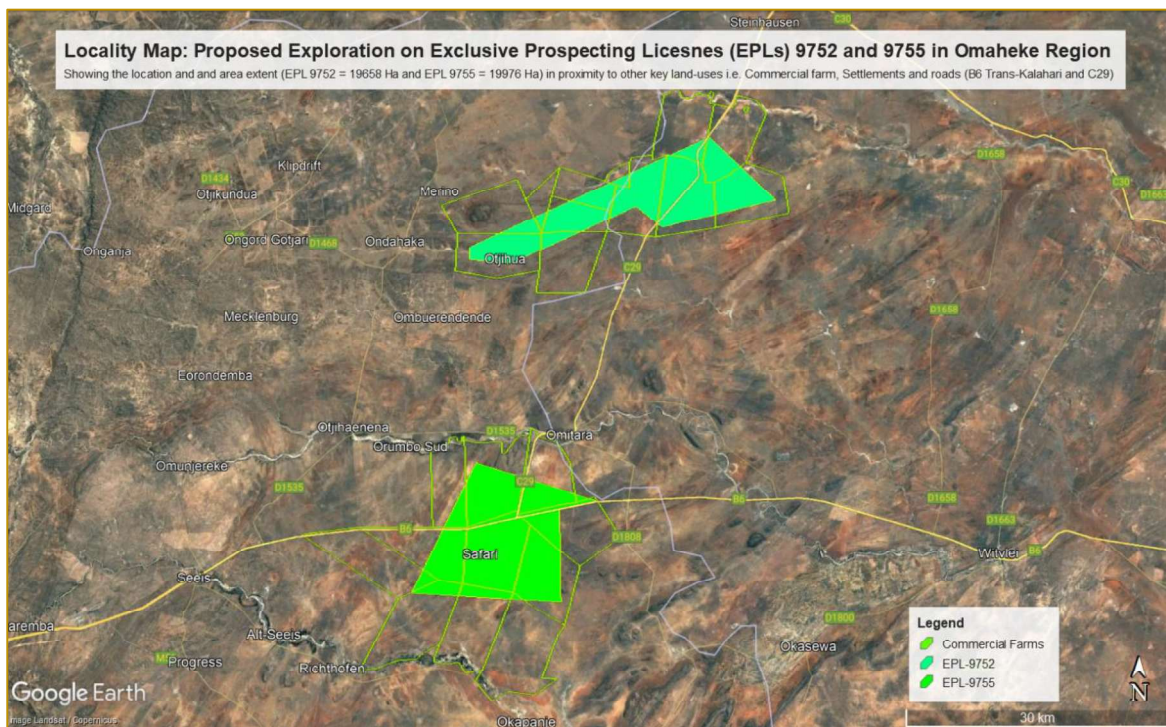


Figure 3: Locality map of the proposed Exclusive Prospecting License (EPL) 9755, Omaheke Region

Table 3: Corner coordinates of the proposed development site

Corner point	Latitude	Longitude
A – EPL 9755 Corner Point 1	-22.321152°	17.902923°
B – EPL 9755 Corner Point 2	-22.455820°	17.834989°
C – EPL 9755 Corner Point 3	-22.462624°	18.002231°
D – EPL 9755 Corner Point 4	-22.369026°	17.998403°
E – EPL 9755 Corner Point 5	-22.358623°	18.039723°

Table 4: Shows a list of commercial farms overlain by the proposed EPL 9755

Commercial / Resettlement Farms	
Farm 1	Farm Otjivero No. 202/Rem
Farm 2	Farm Omitara-West No. 203/Rem
Farm 3	Farm Fulma No. 204
Farm 4	Farm Otjihundu No. 208
Farm 5	Farm Rustig No. 416
Farm 6	Farm Grossvley-Gathemann No. 209
Farm 7	Farm Grossvley Thalheim No. 127/Rem
Farm 8	Farm Muambo No. 130
Farm 9	Farm Safari No. 129
Farm 10	Farm Orumbo No. 198/Rem
Farm 11	Farm Bernshausen No. 337
Farm 12	Farm Alter-Roemer No. 128

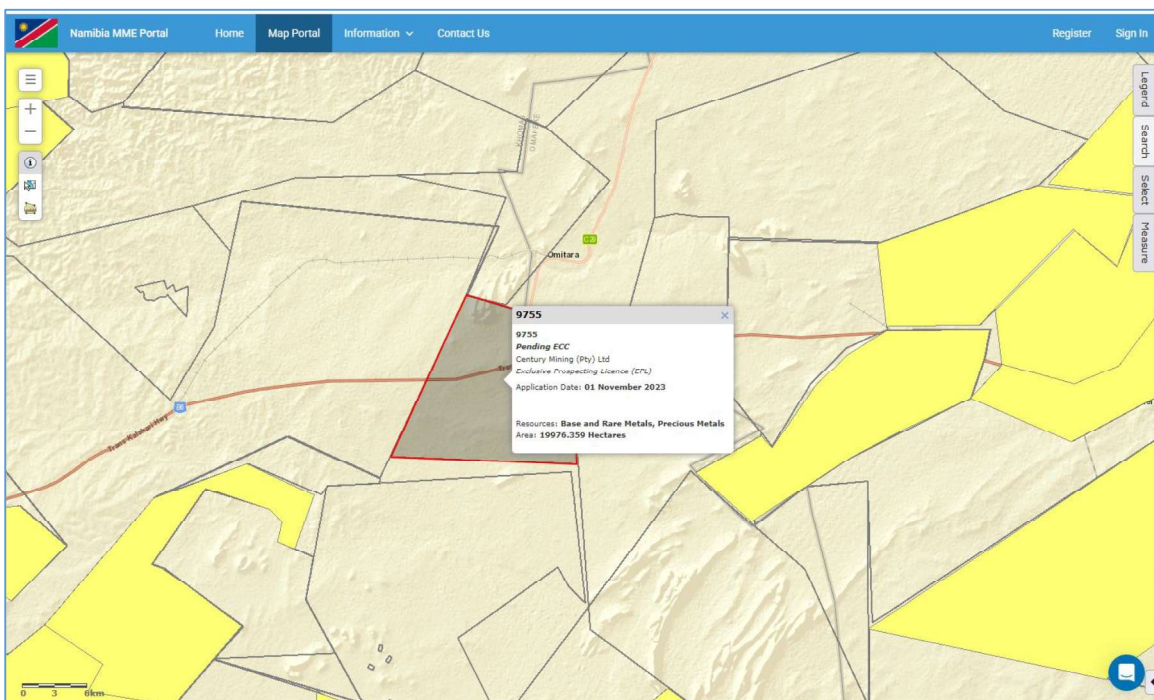


Figure 4: Evidence of the proposed Exclusive Prospecting License (EPL) application on the Ministry of Mine's cadastre (MME, 2025)

2.4. SUPPORTING INFRASTRUCTURE

2.4.1 Basecamp

Given the location the Exclusive Prospecting License (EPL) in a commercial area, a suitable site must be identified in collaboration with all relevant authorities including the Property / Farm Owners to decide on a basecamp location. The camp site will consist of tents, caravans and/or make-shift buildings and temporary ablution facilities.

This is a key and necessary management exercise to mitigate and reduce potential conflict with the property owner in regard to wildlife and livestock management protocols. Critically, it is highly recommended that temporary ablution facilities must be provided and limited to within the existing base-camp footprint pre-identified and agreed upon by the stakeholder