

NAMBWA TENTED LODGE

APP 250826-006301

**in the KWANDO CORE AREA of BWABWATA NATIONAL PARK,
ZAMBEZI REGION**

LOCALITY, LAYOUT and GPS CO-ORDINATES

Nambwa Tented Lodge (NTL), which is situated on the western part of the Kwando River wetland, can be reached by vehicle and by boat (**Fig. 1**). The vegetation at NTL is mostly deciduous trees and provides a refuge to bushbuck, genet, impala and elephant that pass through by night. The road leading to the reception makes a visitor appreciate the uniqueness of NTL on this raised and wooded “Island”.

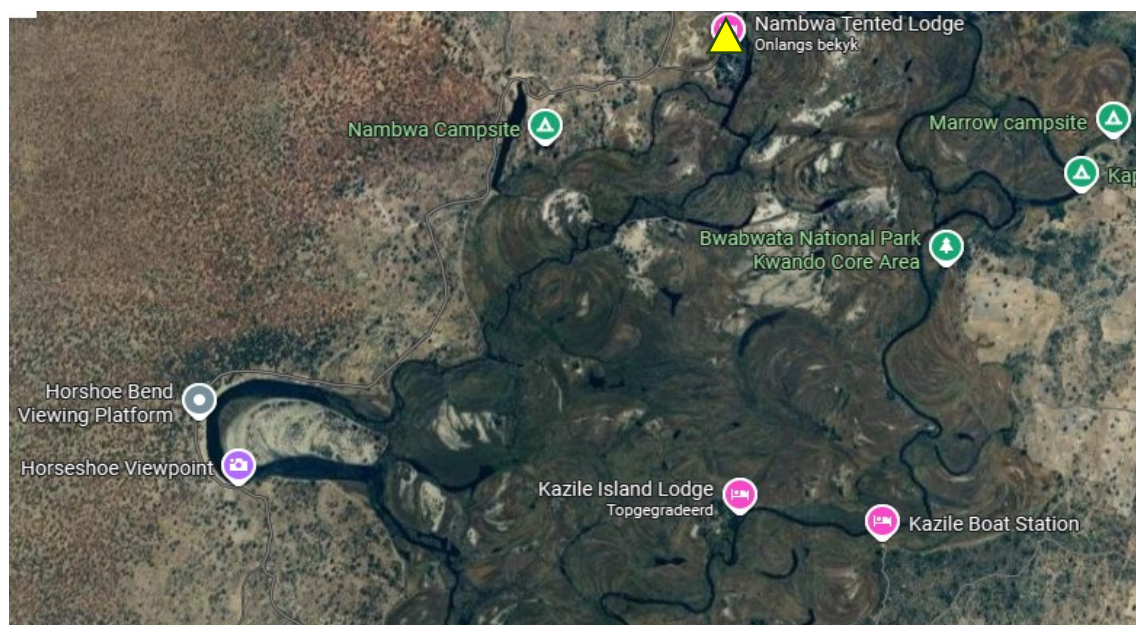


Figure 1: The location of Nambwa Tented Lodge (▲) at the Kwando Core Area within Bwabwata National Park (BNP), alongside at one of the meandering channels of the Kwando River wetland ecosystem (google maps).

Coordinates for Nambwa Tented Lodge (center) are as follows, with a footprint expressed in ha:

NAME	LATITUDE (South)	LONGITUDE (East)	AREA (ha)
Nambwa Tented Lodge	17.87599	23.31776	5.0-5.5

Nambwa Tented Lodge (NTL)

This lodge is situated on one of the numerous channels of the Kwando River as it meanders to the Linyanti River (**Fig. 2**). The lodge lies on an elevated vegetated “Island” (920m above sea-level) populated with knob-thorn, jackal-berry, mangosteen, combretum, terminalia and sausage trees, and surrounded by grassland, sedges and reeds.



Figure 2: Satellite image indicating the location of Nambwa Tented Lodge (Red Block), on a 5.5ha raised landscape adjacent to a channel west of the Kwando River.

A detailed layout of NTL is provided in **Fig. 3**, which indicates tented chalets, staff accommodation, kitchen, restaurant, deck, storerooms

**ENVIRONMENTAL MANAGEMENT PLAN (EMP) for Nambwa Tented Lodge
of African Monarch Lodges CC/2019/07533: APP 250826-006301**



Figure 1: Satellite image (2024), indicating the location of NTL with a detailed layout of current infrastructure. Note: each unit has its own septic tank and soak away system

- En-suite chalets ▲ Student quarters ✂ Main entrance
- └─ Deck with Bar/Restaurant ■ Depot for solid waste ■ Solar panels
- ▲ Parking → Previous solar panel site ● Pool
- ▭ Kitchen, storerooms, staff accommodation
- ▭ Management staff quarters

**ENVIRONMENTAL MANAGEMENT PLAN (EMP) for Nambwa Tented Lodge
of African Monarch Lodges CC/2019/07533: APP 250826-006301**

Table 1: GPS (in decimals) of Infrastructure at Nambwa Tented Lodge

Locality	Latitude South	Longitude East
Reception/Deck/Restaurant	17.87521	23.31759
Kitchen/ Freezer/Food store	17.87532	23.31760
Management accommodation	17.87581	23.31837
Staff accommodation	17.87549	23.31804
Student accommodation	17.87662	23.31776
Car parking for guests	17.87553	23.31730
Storerooms	17.87547	23.31176
Proposed new septic tank site at previous solar panel site	17.87626	23.31804
Harbour (boats)	17.87438	23.31831
Pool	17.487711	23.31780
Previous Solar panel site	17.87626	23.31804
New Solar panels	17.87772	23.31702
Main Gate	17.87762	23.31734

Note: New site for septic tank digesters for grey and black water recommend to be at center of NTL and out of site from guests