

## 2. PROJECT DESCRIPTION

This section provides an overview of the conceptual overview of the prospecting activities on **GV Farm NO.22**, sites and technology selection process for identifying the most suitable Rezoning and Warehouse Development techniques to be adopted.

### 2.1. OVERVIEW OF THE PROPOSED REZONING AND WAREHOUSE DEVELOPMENT ACTIVITIES

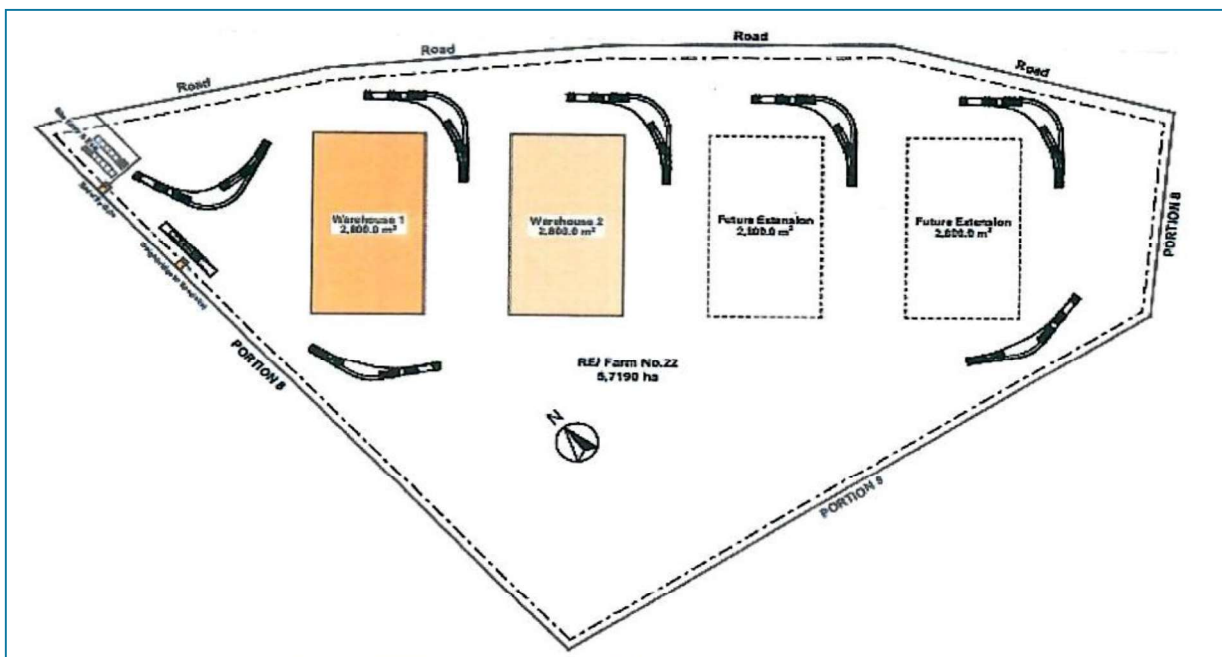
TradePort Namibia acquired the Green Valley Farm No. 22 (10.0034 Hectares (Ha)), located directly west of the C14 / MR 63 (Newly proclaimed trunk Road 2/1, **Figure 5** and **6**) leading to the Rooikop Airport. The proposed planning actions are as follows:

- The rezoning of (5,7190ha) of the Farm Green Valley No. 22 from ‘Undetermined’ to ‘Industrial’ with an applicable bulk.
- Consent to use the 5,7190ha/ ‘remainder’ of Farm Green Valley No. 22 for a noxious industry for receiving, storing and distribution of bulk Minerals/metals.
- Consent to use the 5,7190ha/ ‘remainder’ of Farm Green Valley No. 22 in accordance with the new zoning while the rezoning is formally being completed.

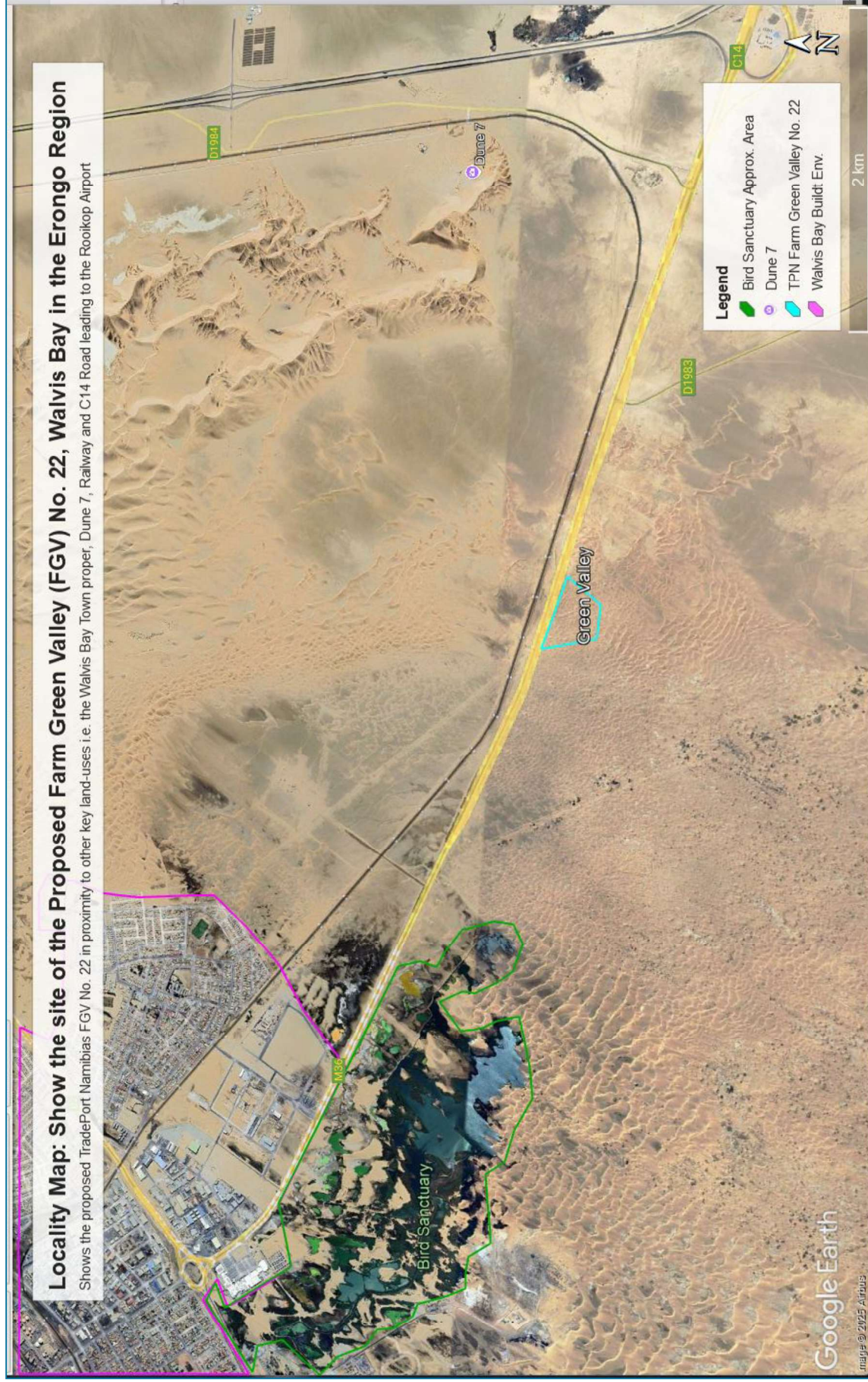
The proponent in future, intends to develop a portion of the property (5.7190 Ha, **Figure 4**) into a Minerals Ore and other commodities Storage Facility to complement their existing Import-Export operations throughout Namibia, and the remaining 4.2844 Ha is earmarked or will be reserved for the “Road reserve”.

**Table 3:** Corner coordinates of the proposed development site

Corner point	Latitude	Longitude
A – Site Corner point 1	-22.975880°	14.566149°
B – Site Corner Point 2	-22.979181°	14.566991°
C – Site Corner Point 3	-22.979265°	14.569200°
D – Site Corner Point 4	-22.977220°	14.570881°

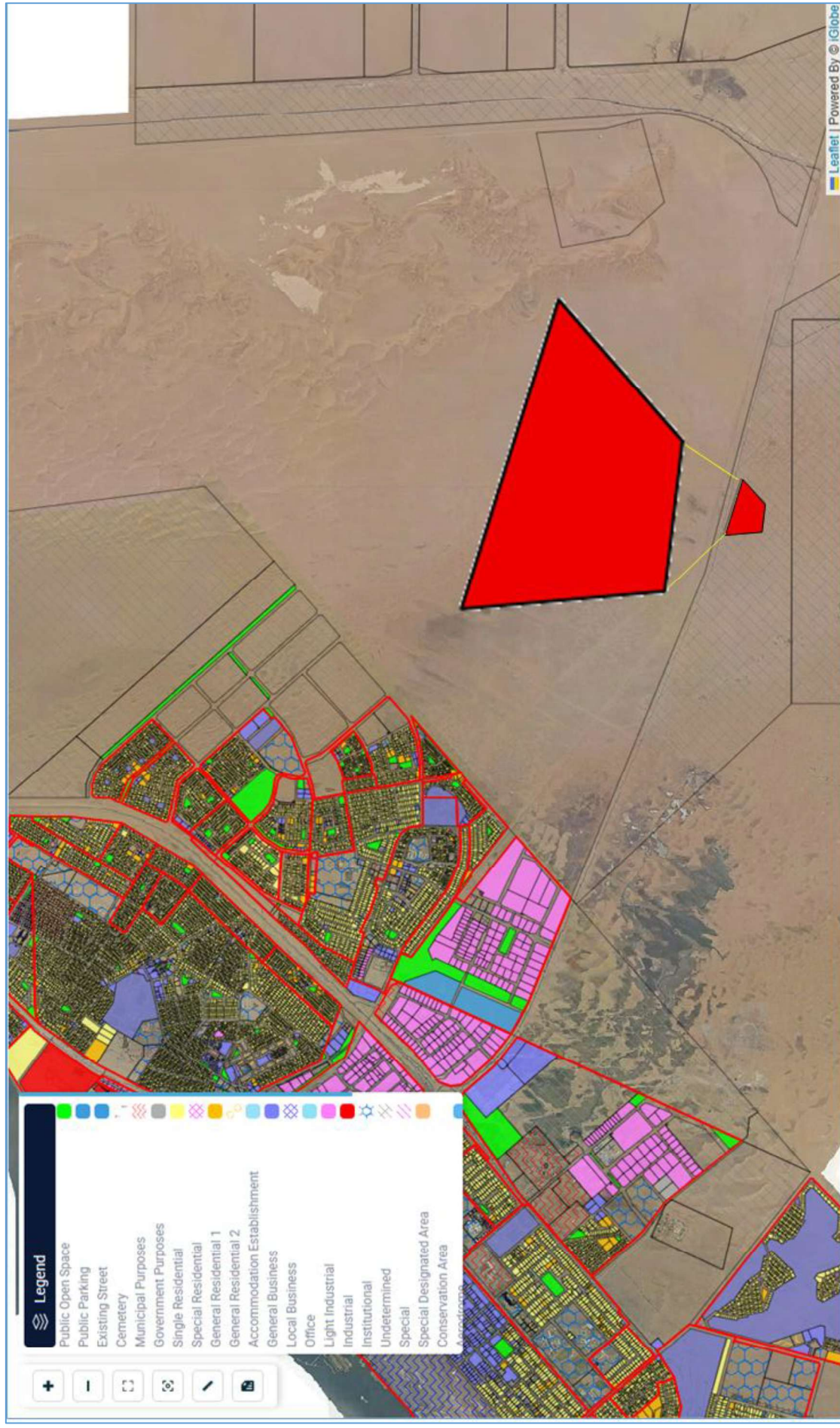


**Figure 4:** Schematic layout of the Proposed future Warehouse Facilities at Green Valley Farm No. 22



**Figure 5:** Shows the location and extent (10 Ha) of the proposed TradePort Namibia's TradePort Namibia Portion of Farm Green Valley No





**Figure 6:** Shows the location of the proposed TradePort Namibia's Portion of Farm Green Valley No. 22 in proximity to other land-uses