

Date: 21 August 2025

Municipality of Otjiwarongo

Private Bag 2209, Otjiwarongo

Namibia

TO WHOM IT MAY CONCERN

Dear Sir/Madam,

RE: STAKEHOLDER NOTIFICATION FOR PROPOSED EXPLORATION ACTIVITIES OF BASE & RARE METALS, DIMENSION STONES, INDUSTRIAL MINERALS AND PRECIOUS METALS WITHIN THE EXCLUSIVE PROSPECTING LICENSE (EPL) NO. 10218 LOCATED NORTH OF OTJIWARONGO, OTJOZONDJUPA REGION.

Excel Dynamic Solutions (Pty) Ltd (EDS) hereby gives notice on behalf of Gateway Resources Trading (Pty) Ltd (the Proponent) about the Environmental Impact Assessment (EIA) process for the proposed mineral exploration on Exclusive Prospecting License EPL No. 10218. The EPL covers an area of 25916.7443 hectares (ha), located about 30 km north of Otjiwarongo in the Otjozondjupa Region.

The EPL covers (overlies) Farms such as: Fresnaye No.196, Goedbegin No.197, Homestead No.205, Marburg No.1, Clifton No.343, Gelukspuit No.343, Gemsbok No.346 and Grosvenor No. 346 (**Figure 2**).

The targeted commodities for the proposed exploration activities are **Base and Rare metals, Dimension Stones, Industrial Minerals and Precious Metals**.

The proposed exploration activities are listed in the Environmental Management Act No. 7 of 2007 and the EIA Regulations 30 of 2012 and cannot be undertaken without an Environmental Clearance Certificate (ECC). As such, an Environmental Scoping and Assessment (ESA) and Environmental Management Plan (EMP) Reports will be submitted to the Ministry of Industries, Mines and Energy (MIME) and the Ministry of Environment, Forestry and Tourism (MEFT) to support the application for decision-making

The Municipality of Otjiwarongo has been identified as an Interested and Affected Party (I&AP) and would have the right to participate in the public consultation process and provide input on potential impacts of the proposed exploration activities.

Gateway Resources Trading (Pty) Ltd intends to conduct exploration activities that entail the following:

- a) Lithology geochemical surveys which include soil and rock sampling shall be collected for trace element analysis to determine the presence of the targeted commodities.
- b) Electromagnetic and geophysical surveys shall be conducted should there be a need, following the designed exploration program.
- c) Detailed exploration drilling shall be conducted if the findings from the desktop study, lithology geochemical, electromagnetic and geophysical surveys are positive. These will entail drilling holes and sample collection for further analysis to determine the depth and spatial extent of the potential mineralization by using both Reverse Circulation (RC) and diamond drilling to about a 200 m depth.

If you have any comments, concerns, or inputs related to the proposed project, **please share them with us at the address below by the 29th of August 2025.**

Tel: +264 (0) 61 259 530

Email: public@edsnamibia.com / mleonard@edsnamibia.com/ vaugustus@edsnamibia.com

Please do not hesitate to contact us if you require any further information



**EXCEL DYNAMIC
SOLUTIONS (PTY) LTD**
Reg. No: 2019/0817
P.O. Box 997154, Maerua Mall
Tel: +264 61 259 530
Email: info@edsnamibia.com

Nerson Tjelos

Head of Project

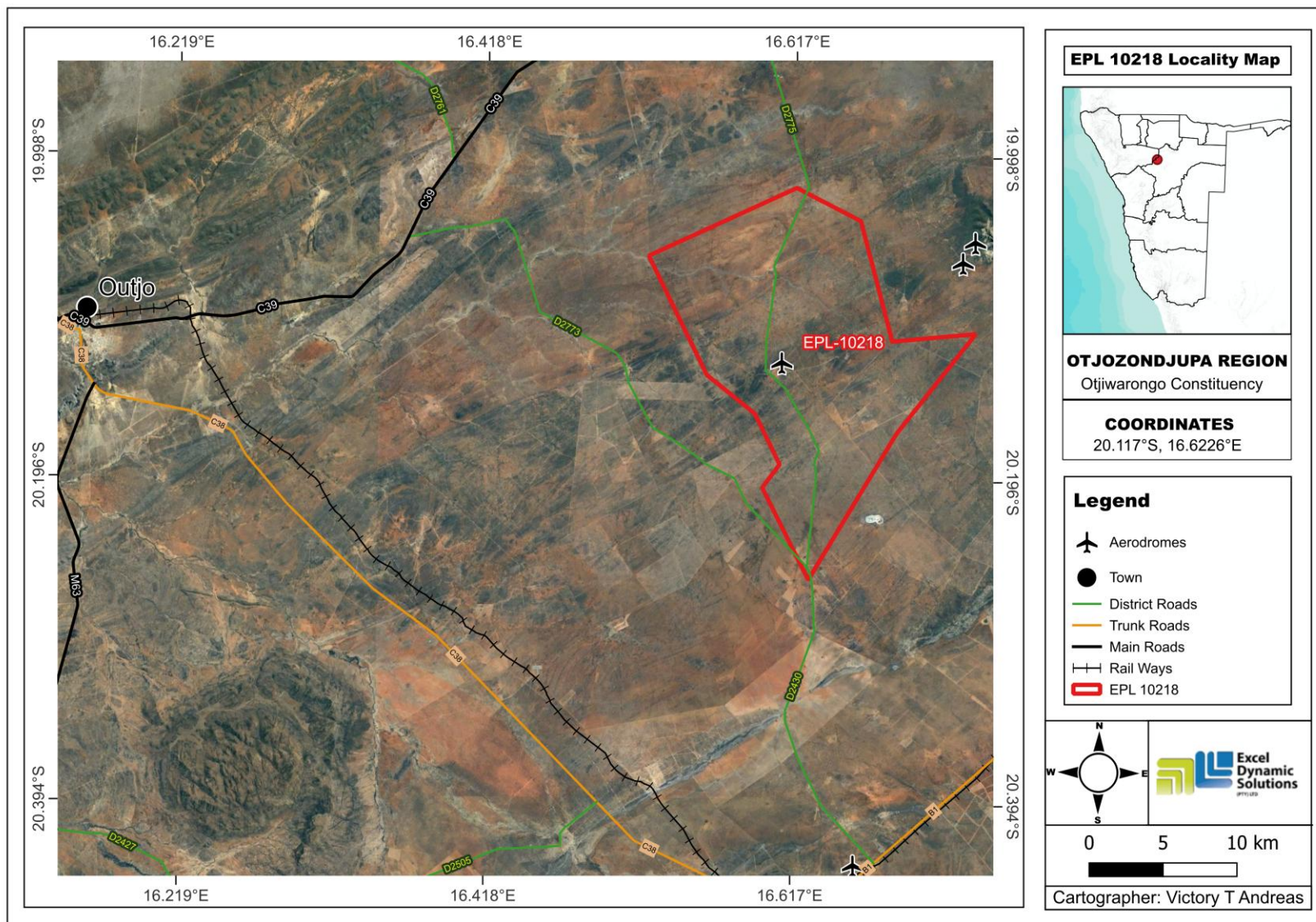


Figure 1: Locality map of EPL 10218.

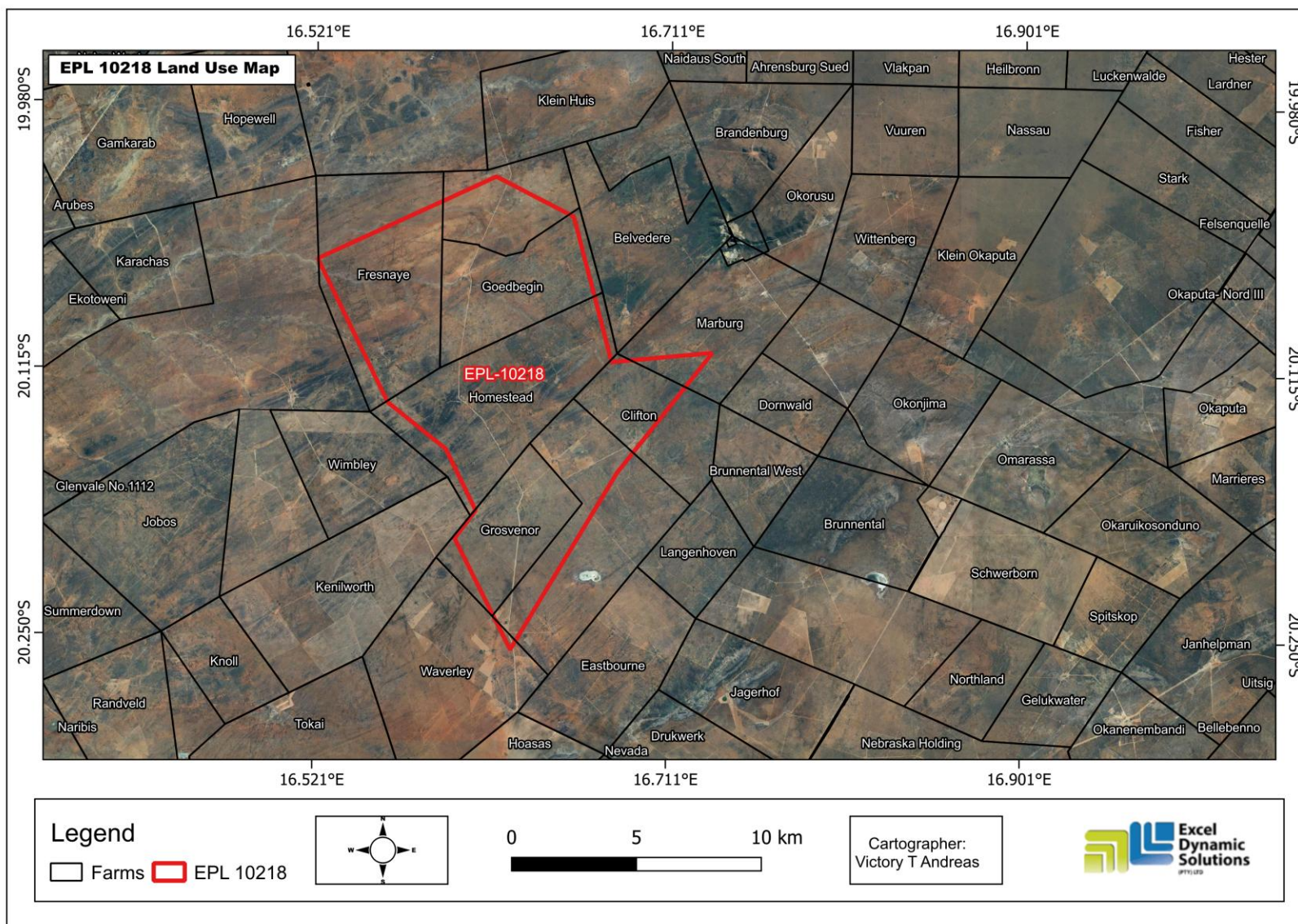


Figure 2: Land use map of EPL 10218.