

2.4. PROJECT LOCATION

The location of the proposed license area which constitute Mining Claim (MC 71767) situated in North-western Namibia (**Figure 4**), North-west of **Omao Village** in the **Opuwo Rural Constituency** in the Kunene Region.



Figure 4: Locality map of the proposed Mining Claim 71767 at Omao, Kunene Region

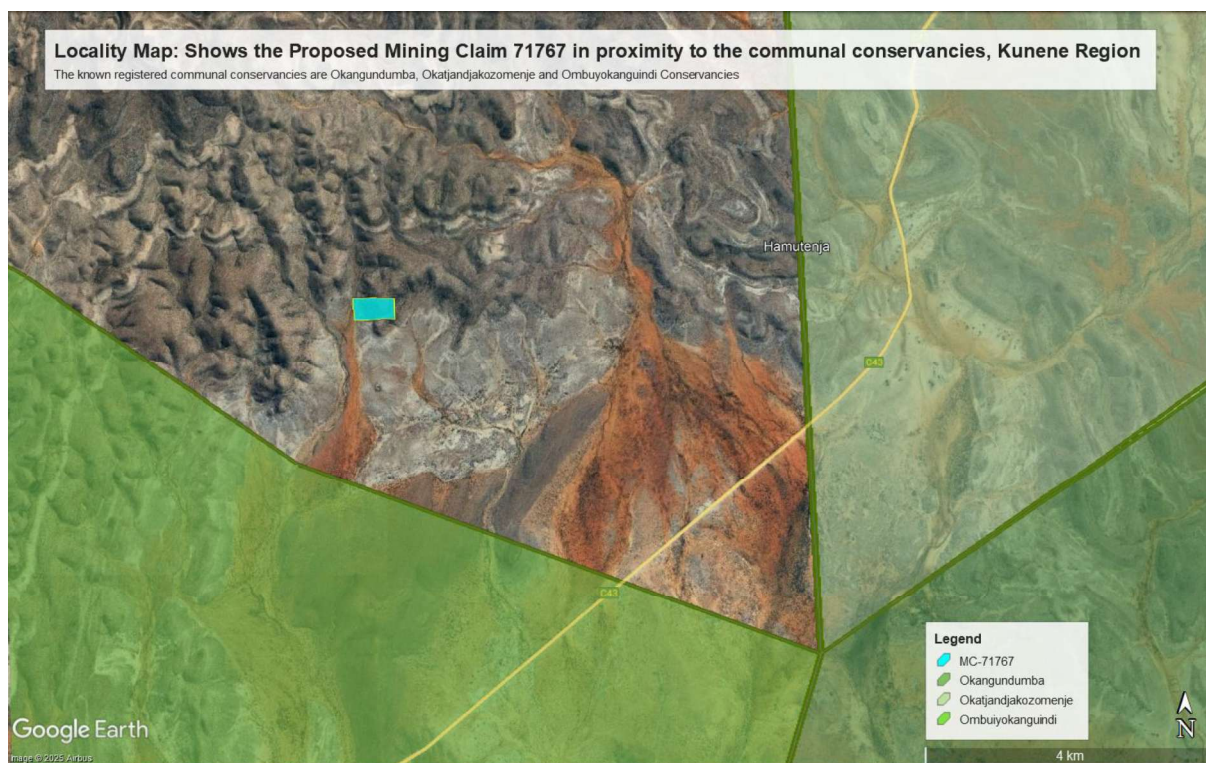


Figure 5: Shows the location of the proposed mining claim in proximity to communal conservancies

Table 3: Corner coordinates of the proposed development site

| Corner point | Latitude | Longitude |
|-----------------------------|---------------|---------------|
| A – MC 71767 Corner Point 1 | 18°30'24.42"S | 13°43'45.93"E |
| B – MC 71767 Corner Point 2 | 18°30'23.72"S | 13°43'25.61"E |
| C – MC 71767 Corner Point 3 | 18°30'33.77"S | 13°43'26.28"E |
| D – MC 71767 Corner Point 4 | 18°30'23.76"S | 13°43'25.57"E |

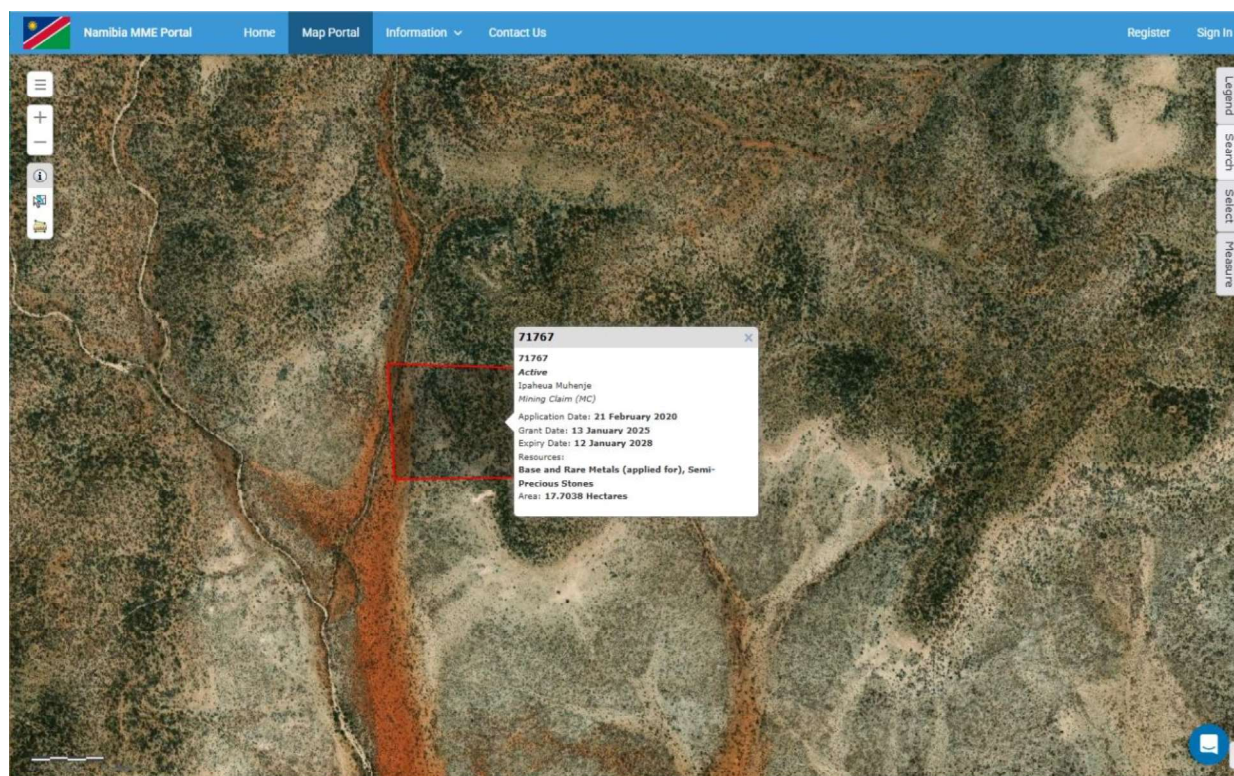


Figure 6: Evidence of the proposed mining Claim application on the Ministry of Mine's cadastre (MME, 2025)

2.4. SUPPORTING INFRASTRUCTURE

2.4.1 Basecamp

Given the location the mining claim in a communal area, a suitable site must be identified in collaboration with all relevant authorities including the Traditional Authority to decide on a basecamp location. Where practical and possible, it is strictly recommended that for unskilled labour, local community members are employed and thus accommodated at their existing homestead to mitigate and reduce potential conflict with the conservancy wildlife and livestock management protocols.

During the prospecting period, it is anticipated that about 10 – 15 persons will be employed, although only four staff are allowed to lodge on-site on an alternating (rotating) basis. The project specialists such as geologists, field assistants, geo-technicians and sampling crew, will be hosted on either a daily or special visit basis, and thus might not all be on-site simultaneously.

Therefore, it is highly recommended that temporary ablution facilities must be provided and limited to within the existing base-camp footprint pre-identified national park campsites, and the necessary authorization must be obtained prior to installation of any such facility.