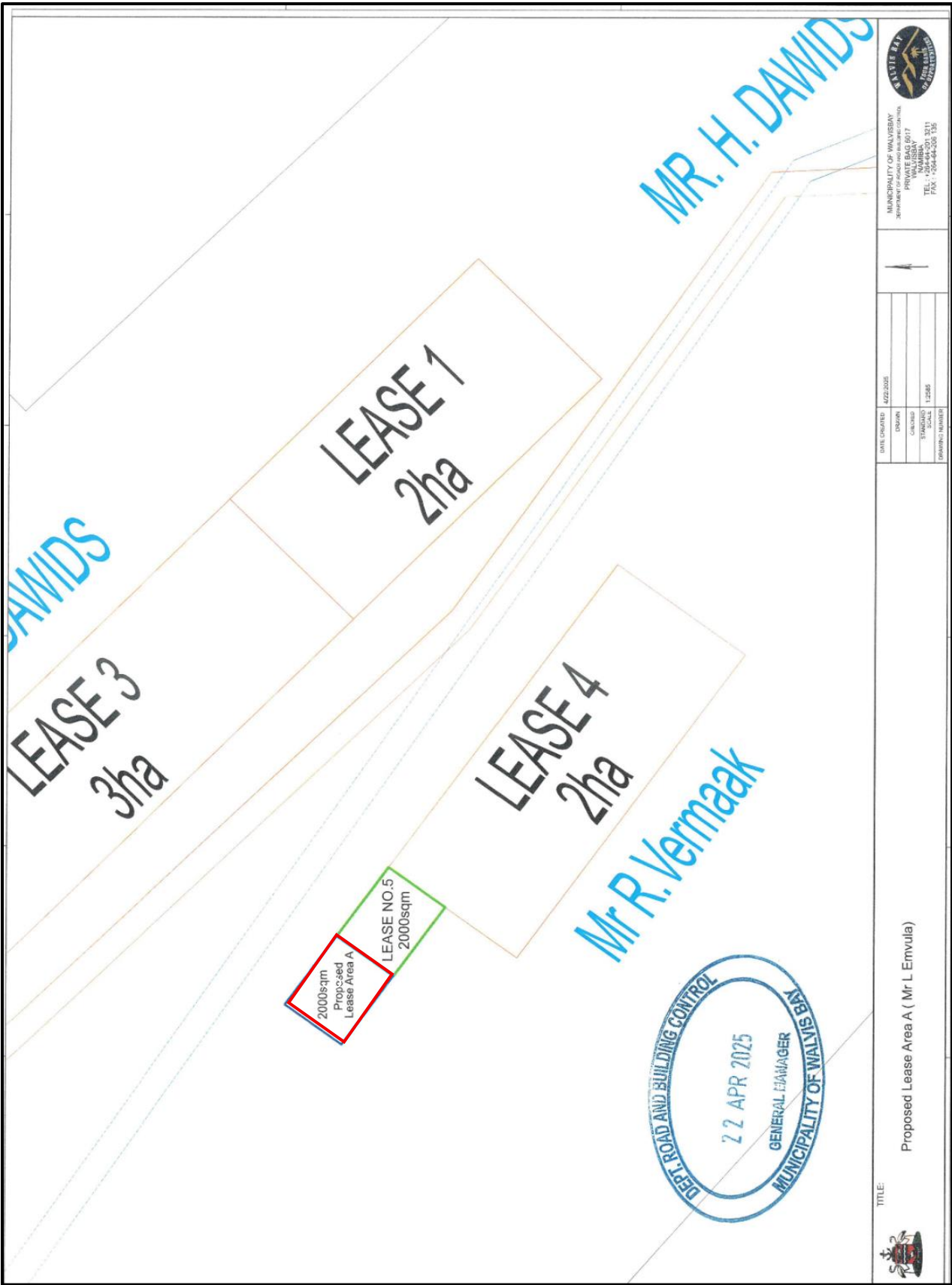


LOCALITY MAP FOR THE LEASE PLOT FOR SOUTHERN AFRICA GROUP



APPROVED 21 MAY 2025 No. A303/2025

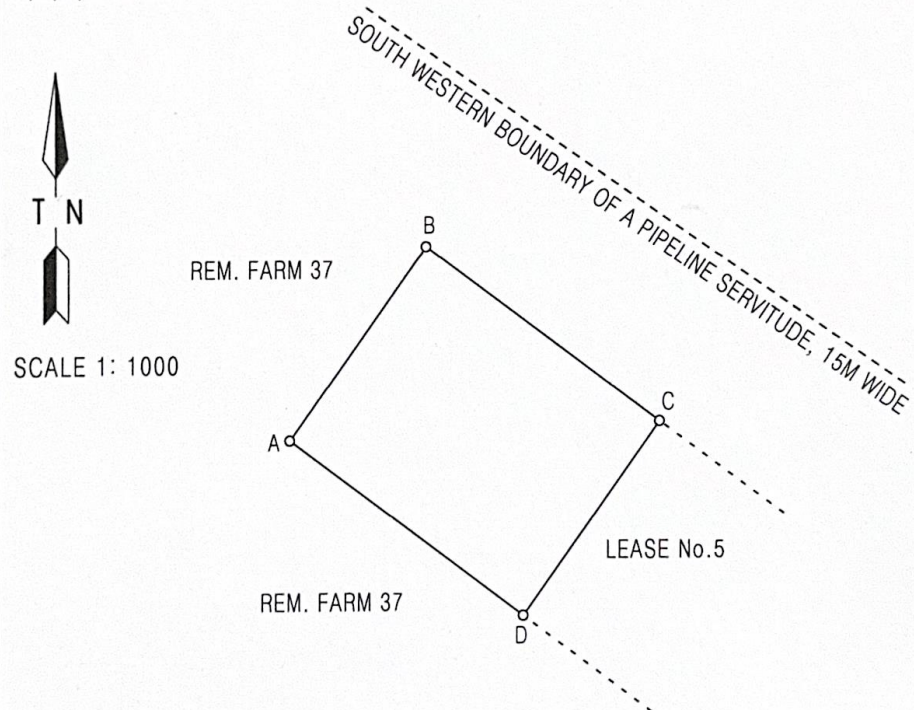
R. K. Munyonga
SURVEYOR-GENERAL

SIDES metres		ANGLES OF DIRECTION	CO-ORDINATES Y System: 22/15 X			DESIGNATION
A B	40,00	216.00.00	A	+41 013,33	+116 889,16	L6A
B C	50,00	306.00.00	B	+40 989,82	+116 856,80	L6B
C D	40,00	36.00.00	C	+40 949,37	+116 886,19	L5B
D A	50,00	126.00.00	D	+40 972,88	+116 918,55	L5A

T055	▲	+34 756,34	+108 574,68	Rooikop
T065	▲	+36 134,06	+127 437,62	Schwarzekuppe

DESCRIPTION OF BEACONS:

A,B,C,D 16mm iron peg in concrete



The figure A B C D
represents 2 000 square metres of land , being
LEASE No.6 OVER THE REMAINDER OF THE FARM No.37
Situate in the Registration Division F
Erongo Region, Namibia

Surveyed between February 2015 and
May 2025 by me

R. K. Munyonga
R.K.Munyonga
Professional Land Surveyor

This diagram is annexed to No. d.d. Registrar of Deeds	The original diagram is No.A418/71 annexed to Grant No.126.71	S.R. No. E89/2025 Noting Plan: LD-N File No. F37
---	--	--