

2.3. PROJECT LOCATION

The Exclusive Prospecting License is situated about 26 km West of Grunau Settlement, 8 km South of Klein Karas Village and 15 km South-east of the Gondwana Nature Park in the ||Karas Region.

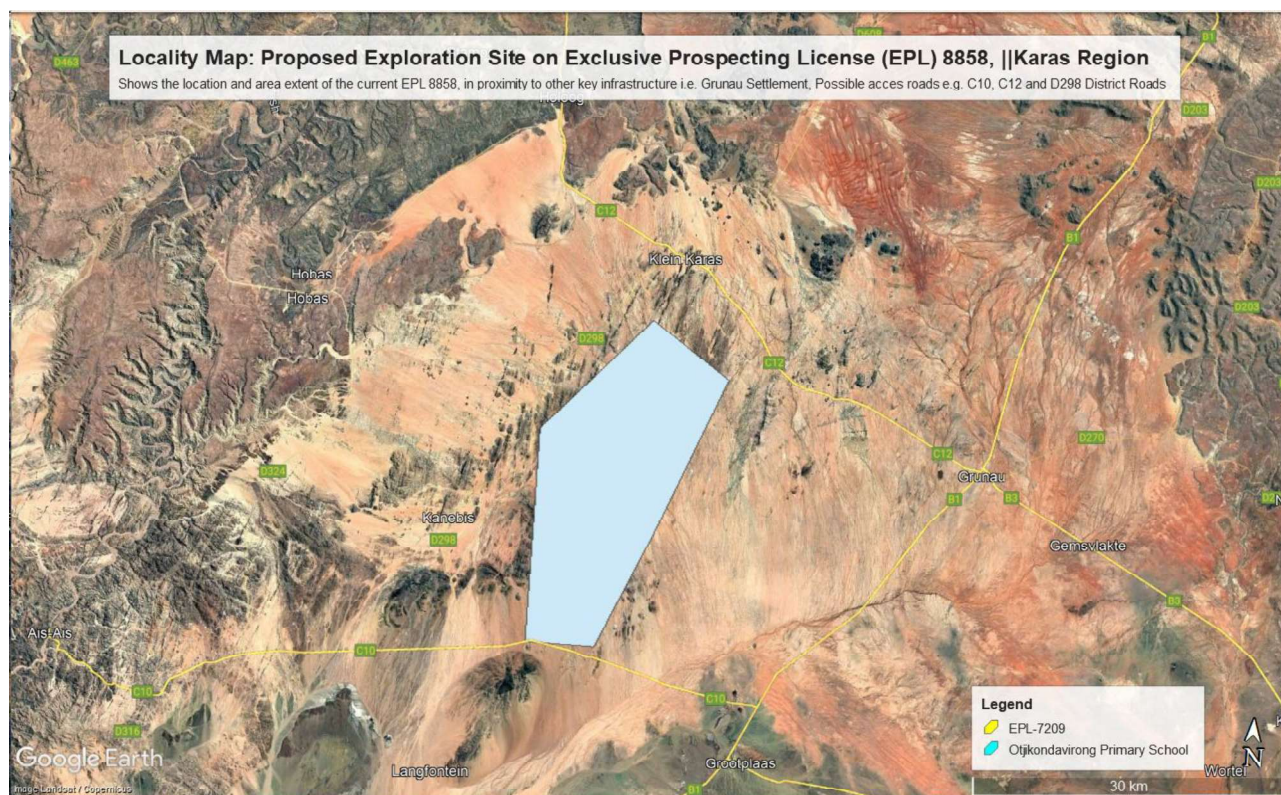


Figure 4: Show the location and area extent (104 Ha) of the proposed Prospecting License 190 in the Erongo Region

Table 3: Prospecting Claim's Centre coordinates of the proposed development site

| Corner point | Latitude | Longitude |
|--|---------------------------------|---------------|
| A – EPL 8858 Corner Point 1 | 27°39'54.08"S | 18° 7'39.56"E |
| B – EPL 8858 Corner Point 2 | 27°37'13.53"S | 18° 3'2.20"E |
| C – EPL 8858 Corner Point 3 | 27°43'3.75"S | 17°56'59.03"E |
| D – EPL 8858 Corner Point 4 | 27°54'0.94"S | 17°56'53.56"E |
| D – EPL 8858 Corner Point 5 | 27°53'56.06"S | 18° 0'59.28"E |
| Commercial / Resettlement Farms | | |
| Farm 1 | Farm Nakais No. 11 | |
| Farm 2 | Farm Nooit Gedaccth No. 105/008 | |
| Farm 3 | Farm Haruchas No. 10/004/1 | |
| Farm 4 | Farm Noupoot No. 12/001 | |
| Farm 5 | Farm Wetterkopf No.12/REM | |
| Farm 6 | Farm Kuduberg No. 9/REM | |
| Farm 7 | Farm Haruchas No. 10/REM | |
| Farm 8 | Farm Dagbreek No. 10/003 | |
| Farm 9 | Farm Frankfurt No. 7/REM | |
| Farm 10 | Fam Bruinkop No. 7/002 | |

It is serviced by a number of district gravel road namely from Grunau, primarily exiting through the C12 into the North-western direction and the down the D298 or exiting via the B1 (Trans-Oranje Highway) and brunching westwards at about 35 km onto the C10 and again connecting to the D298 gravel road.