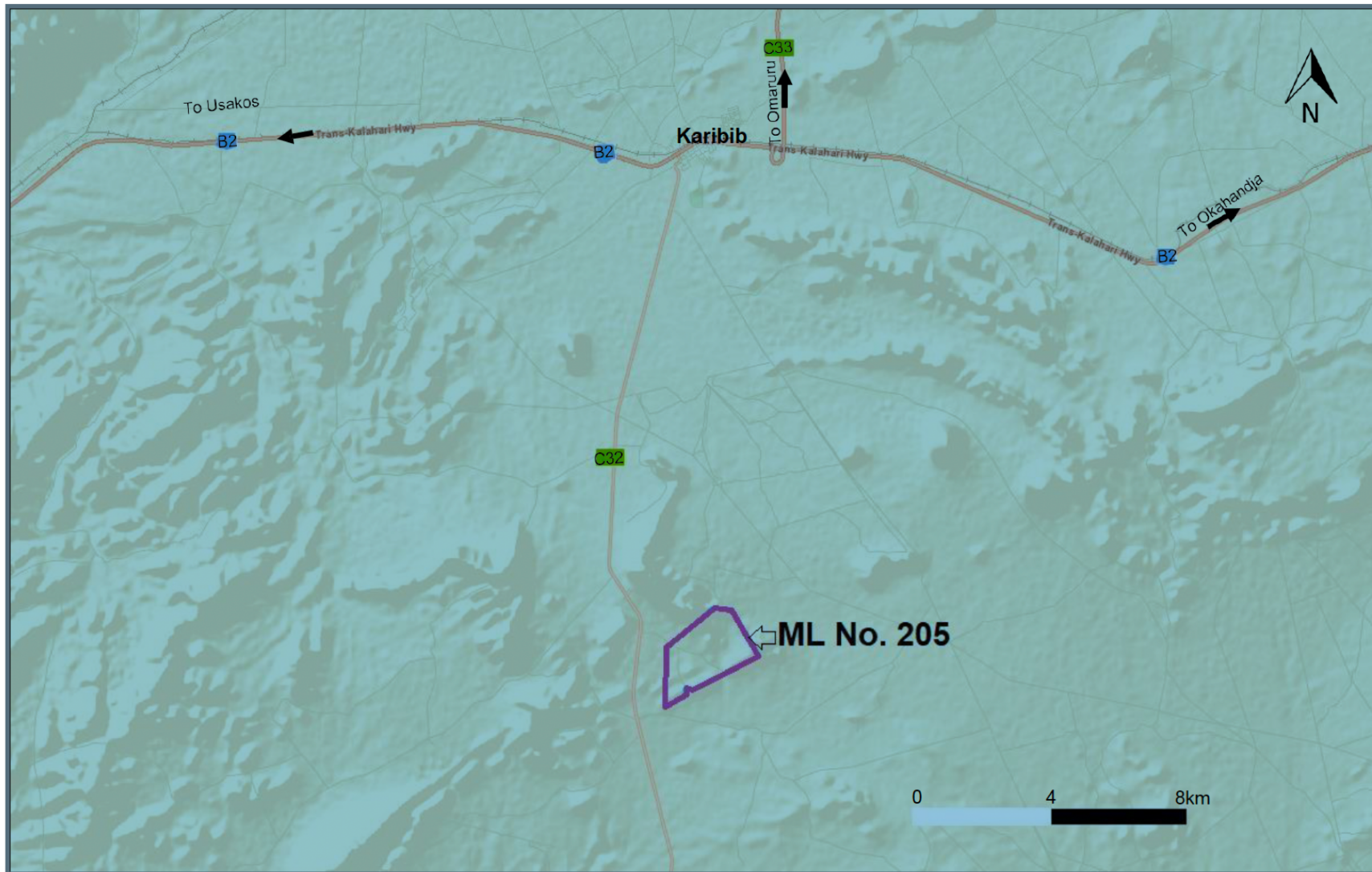


ML205 : LOCALITY MAPS



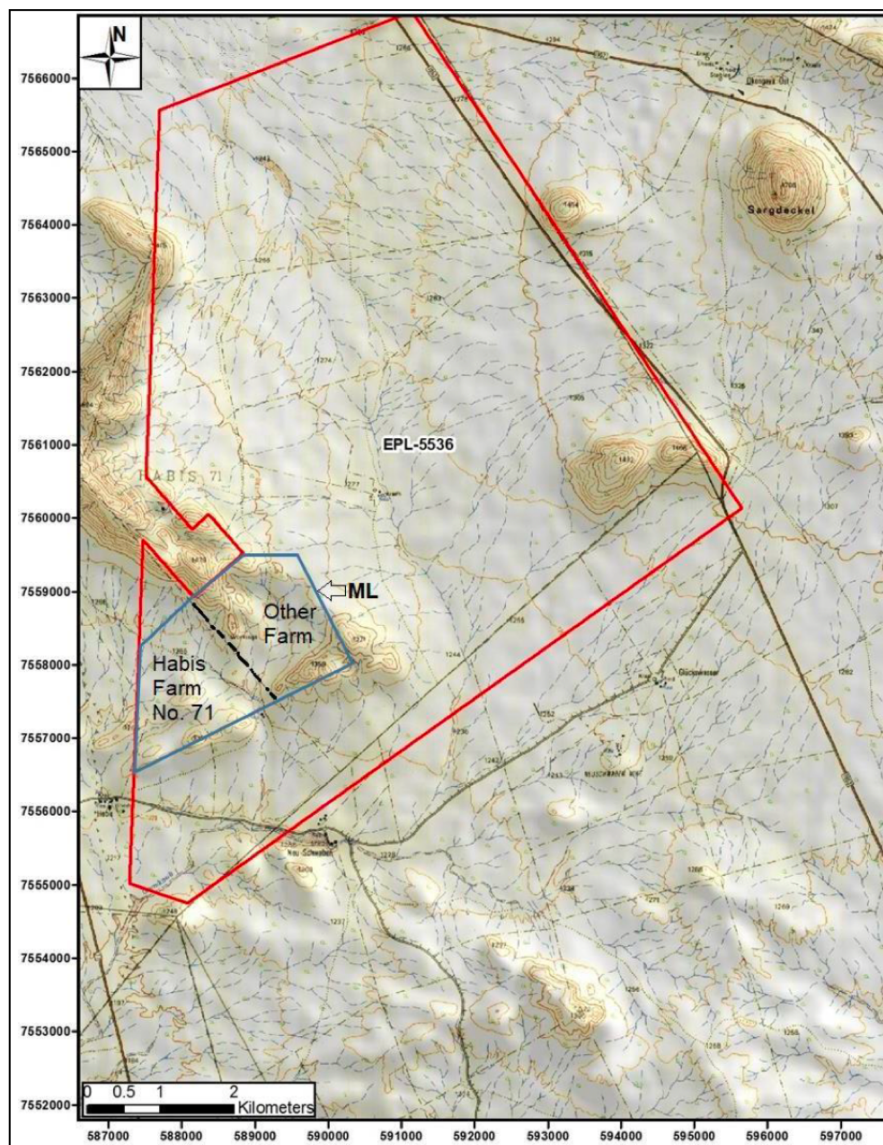


Figure 4: Detailed location of the ML 205 falling within the EPL 5536 and showing the two (2) privately owned farms covered by the ML 205 Area (Data Source: Geological Survey of Namibia)



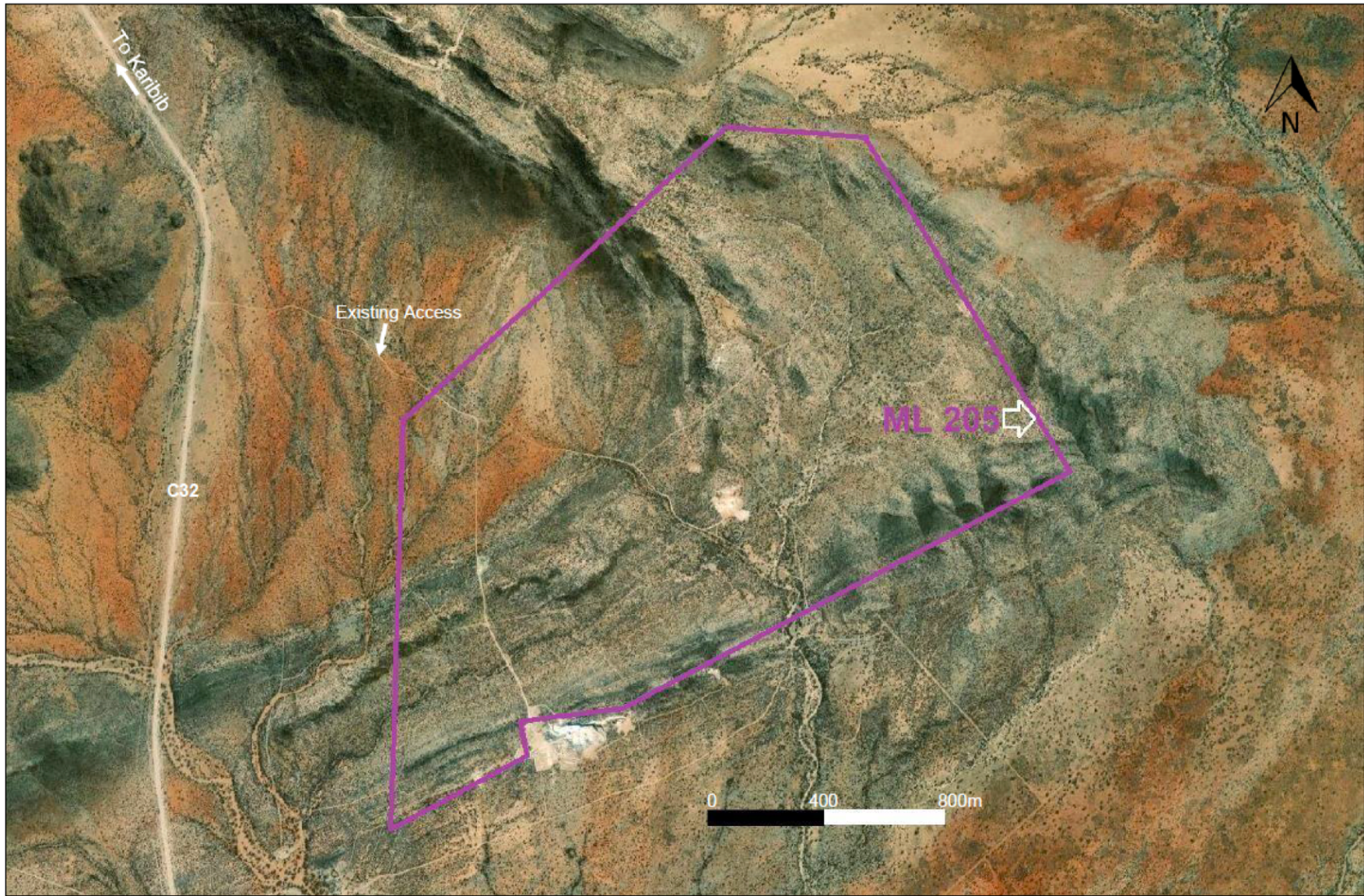


Figure 5: Detailed location of the 502 Ha ML 205 area with respect to the existing access roads and quarries / excavations in the area (Source: Google Earth, 2021).