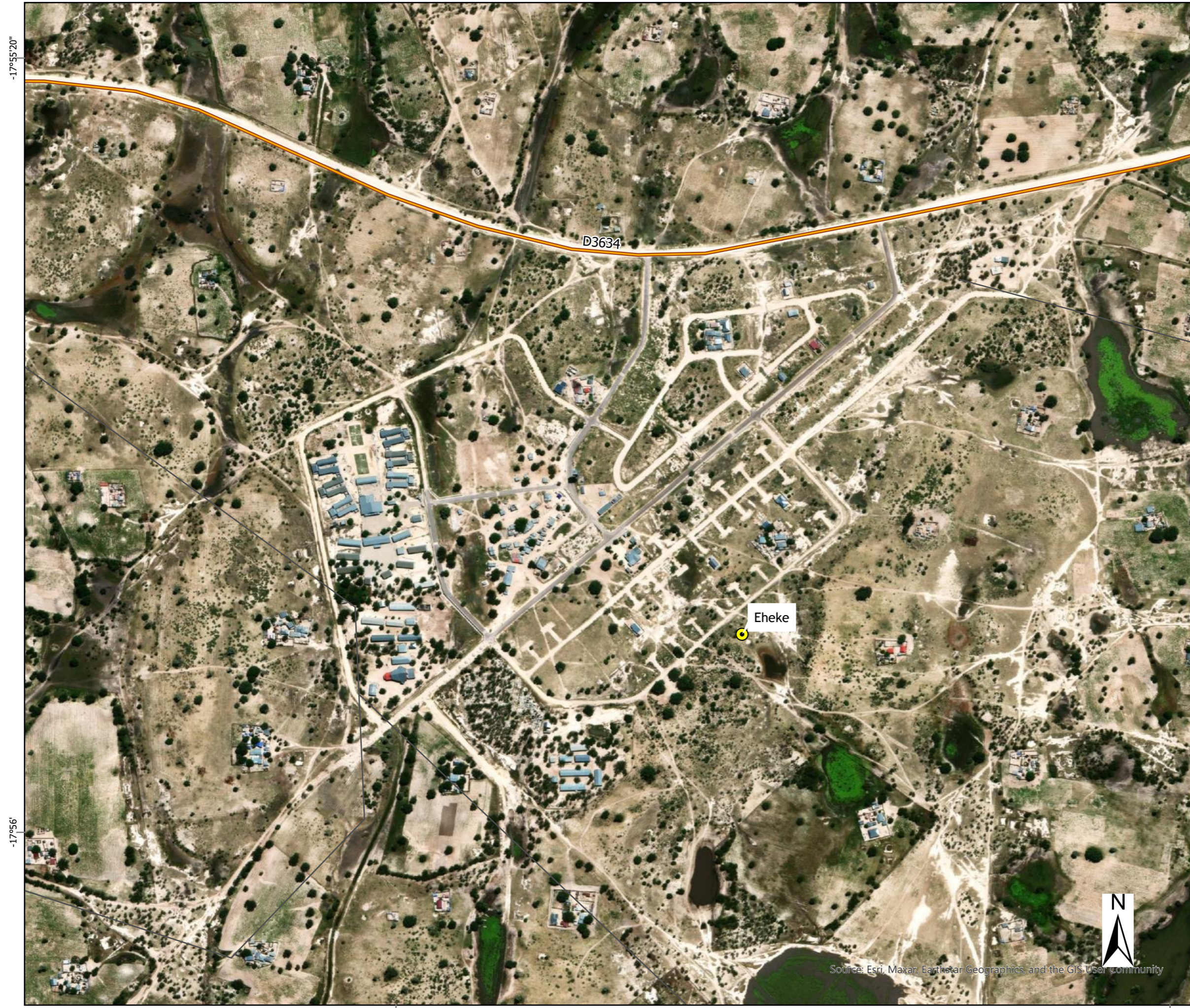


PROPOSED POWERCOM TELECOMMUNICATION TOWER- EHEKE LOCALITY MAP



Legend

- Site Location
- Trunk Roads
- Tracks

© OpenStreetMap (and contributors, CC-BY-SA)

Data Sources:
Esri World Imagery Basemap

0 150 300 Meters

SCALE: 1:5,955

FIGURE NO.: -	MAP NUMBER: 24-0597-04
DRAWN BY: N NELIWA ENVIRONMENTAL CONSULTANT	REVIEWED BY: V SHIKWAYA PROJECT MANAGER
DATUM: WGS84	DATE: 06 NOVEMBER 2024
PROJECTION: GEOGRAPHIC	
PROJECT: ENVIRONMENTAL IMPACT ASSESSMENT OF PROPOSED TELECOMMUNICATION TOWERS IN OSHANA AND KARAS REGION	
CLIENT: POWERCOM (PTY) LTD	

GCS
Water & Environmental
Consultants

45 Feld Street Ausspanplatz
PO Box 81808 Windhoek
Namibia

Tel: +27 (0) 11 803 5726
Fax: +27 (0) 11 803 5745
E-mail: jhb@gcs-sa.biz
www.gcs-sa.biz

Source: Esri, Maxar, Earthstar Geographics, and the GIS User community

-17°55'20"

-17°56'

15°52'

15°52'40"